


APP CRS	Rwy Idg	10000
077°	TDZE	29
	Apt Elev	29

RNAV (RNP) Y RWY 8

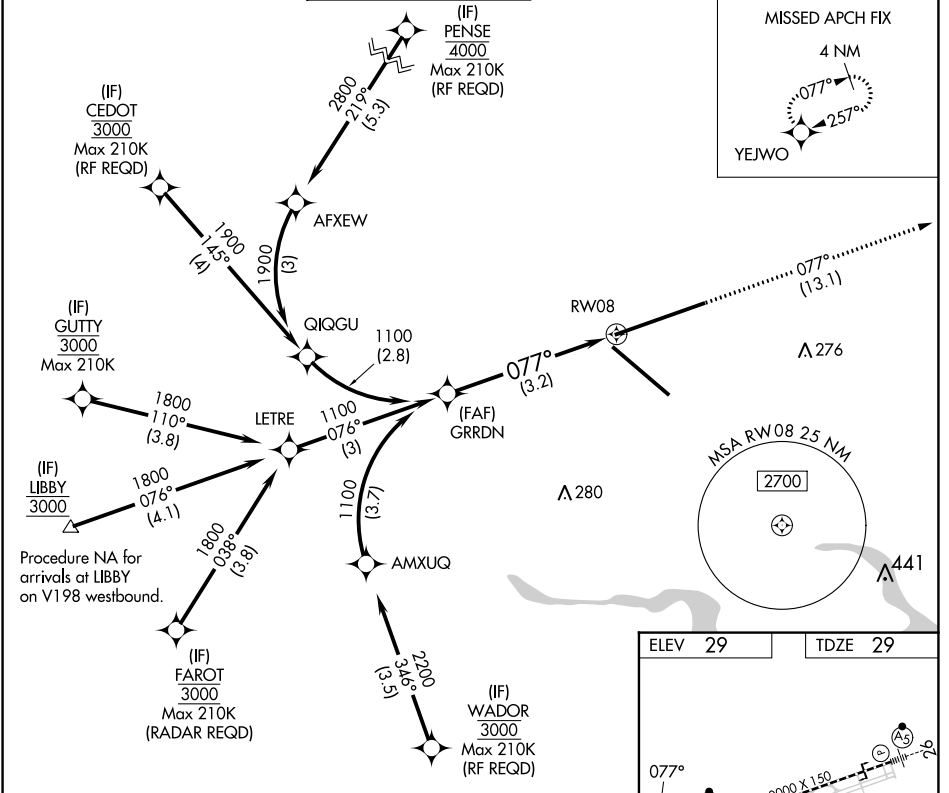
JACKSONVILLE INTL (JAX)

For uncompensated Baro-VNAV systems, procedure MALS below -5°C (23°F) or above 54°C (130°F). GPS required. For inop MALSR, increase RNP 0.11 all Cats visibility to 1 mile, increase RNP 0.30 all Cats visibility to 1½ mile.

ALSIF-2 

MISSED APPROACH: Climb to 2000 on track 077° to YEJWO and hold.


D-ATIS	JACKSONVILLE APP CON	JACKSONVILLE TOWER	GND CON	CLNC DEL	CPDLC
125.85	119.0 269.9	118.3 317.7	121.9 348.6	119.5 290.275	



SE-3, 05 SEP 2024 to 03 OCT 2024

SE-3, 05 SEP 2024 to 03 OCT 2024

VGSI and RNAV glidepath not coincident (VGSI Angle 3.00/TCH 70).

2000 YEJWO 

tr 077°

1100 GRRDN 1100

GP 3.00° TCH 51

077°

RW08

See planview for multiple IF locations.

3.2 NM

CATEGORY	A	B	C	D
RNP 0.11 DA		356/40	327 (400-¾)	
RNP 0.30 DA		426/45	397 (400-¾)	

AUTHORIZATION REQUIRED

ELEV 29	TDZE 29
---------	---------

10000 X 150

700 X 150

TWR 201

TWR 191

REIL Rwy 32

TDZ/CL Rwys 8, 14, and 26

HIRL Rwys 8-26 and 14-32