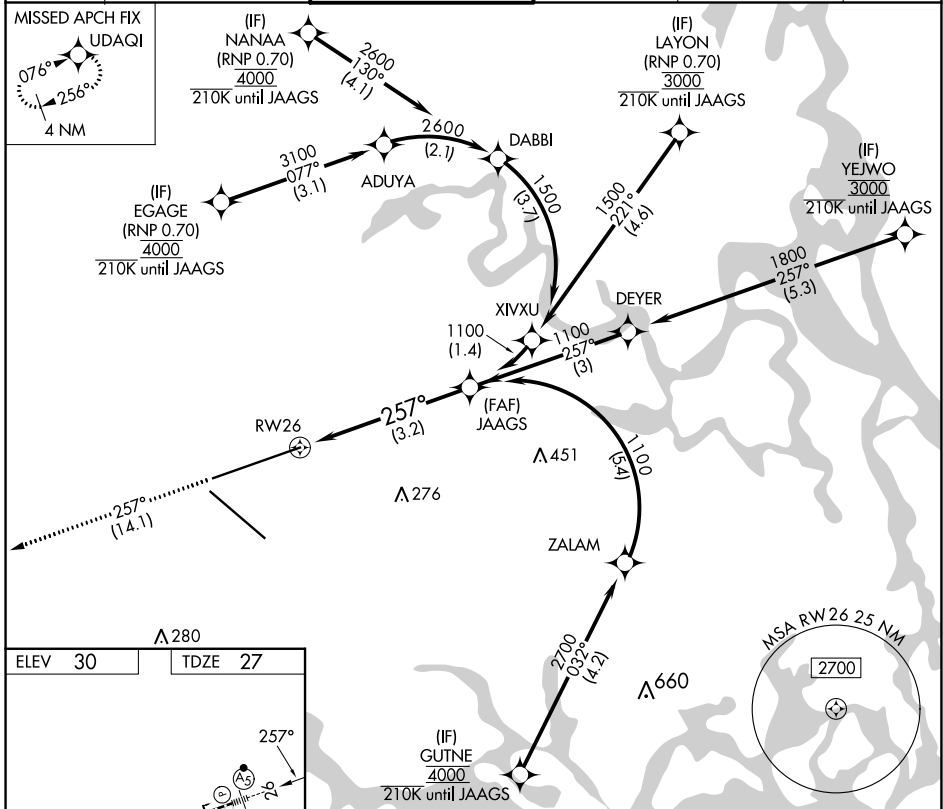


APP CRS	Rwy Idg	<b>10000</b>
<b>257°</b>	TDZE	<b>27</b>
	Apt Elev	<b>30</b>

# RNAV (RNP) Y RWY 26

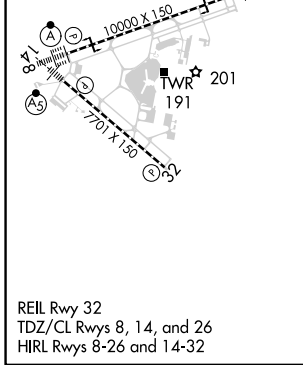
JACKSONVILLE INTL (JAX)

RNP AR APCH-GPS.		MALSR		MISSED APPROACH: Climb to 2000 on track 257° to UDAQI and hold.	
For uncompensated Baro-VNAV systems, procedure NA below -5°C or above 54°C.					
D-ATIS	JACKSONVILLE APP CON	JACKSONVILLE TOWER	GND CON	CLNC DEL	CPDLC
<b>125.85</b>	<b>119.0 269.9</b>	<b>118.3 317.7</b>	<b>121.9 348.6</b>	<b>119.5 290.275</b>	



SE-3, 05 SEP 2024 to 03 OCT 2024

SE-3, 05 SEP 2024 to 03 OCT 2024



ELEV 30	TDZE 27				
UDAQI tr 257°		VGSi and RNAV glidepath not coincident (VGSi Angle 3.00/TCH 70).			
See planview for multiple IF locations.					
RWY 26		JAAGS 1100		1100	
				GP 3.00° TCH 49	
		3.2 NM			
CATEGORY	A	B	C	D	
RNP 0.30 DA	419/35		392 (400-5%)		
<b>AUTHORIZATION REQUIRED</b>					