

APP CRS	Rwy Idg	<b>7701</b>
<b>137°</b>	TDZE	<b>27</b>
	Apt Elev	<b>29</b>

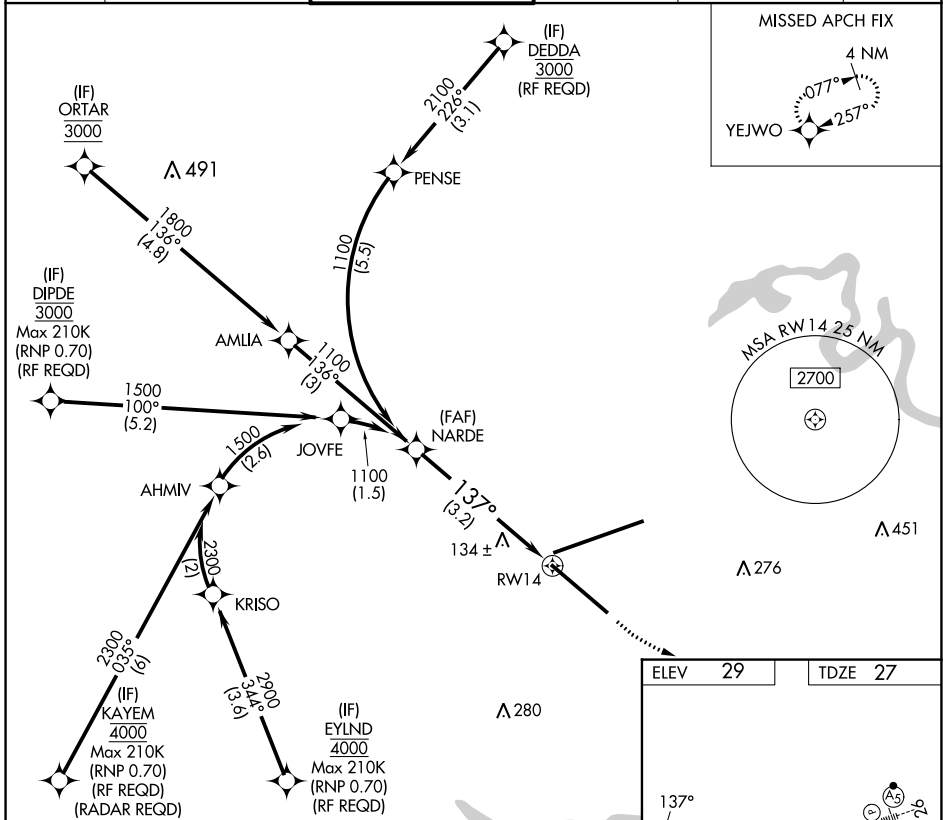
# RNAV (RNP) Y RWY 14

JACKSONVILLE INTL (JAX)

For uncompensated Baro-VNAV systems, procedure NA below -5°C (23°F) or above 54°C (130°F). GPS required. For inoperative MALSR, increase RNP 0.30 all Cats

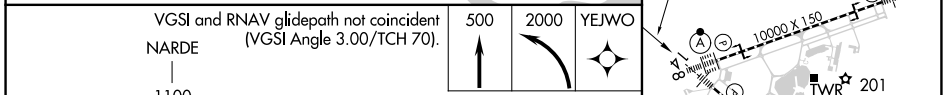
MALSR MISSED APPROACH: Climb to 500 then climbing left turn to 2000 direct YEJWO and hold.

D-ATIS	JACKSONVILLE APP CON	JACKSONVILLE TOWER	GND CON	CLNC DEL	CPDLC
<b>125.85</b>	<b>119.0 269.9</b>	<b>118.3 317.7</b>	<b>121.9 348.6</b>	<b>119.5 290.275</b>	

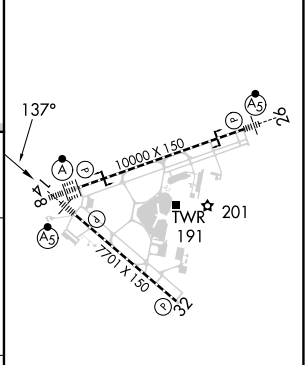


SE-3, 05 SEP 2024 to 03 OCT 2024

SE-3, 05 SEP 2024 to 03 OCT 2024



ELEV	29	TDZE	27
------	----	------	----



CATEGORY	A	B	C	D
RNP 0.30 DA		389-1	362 (400-1)	
<b>AUTHORIZATION REQUIRED</b>				

REIL Rwy 32  
 TDZ/CL Rwys 8, 14, and 26  
 HIRL Rwys 8-26 and 14-32