

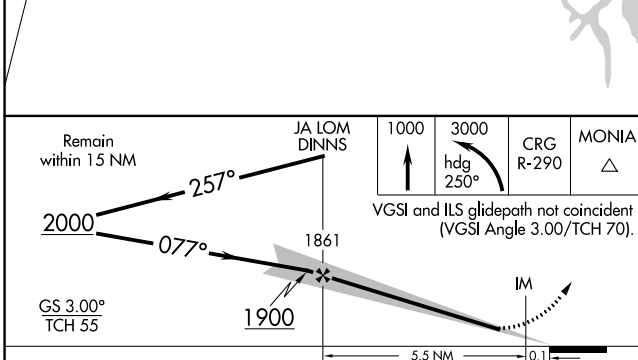
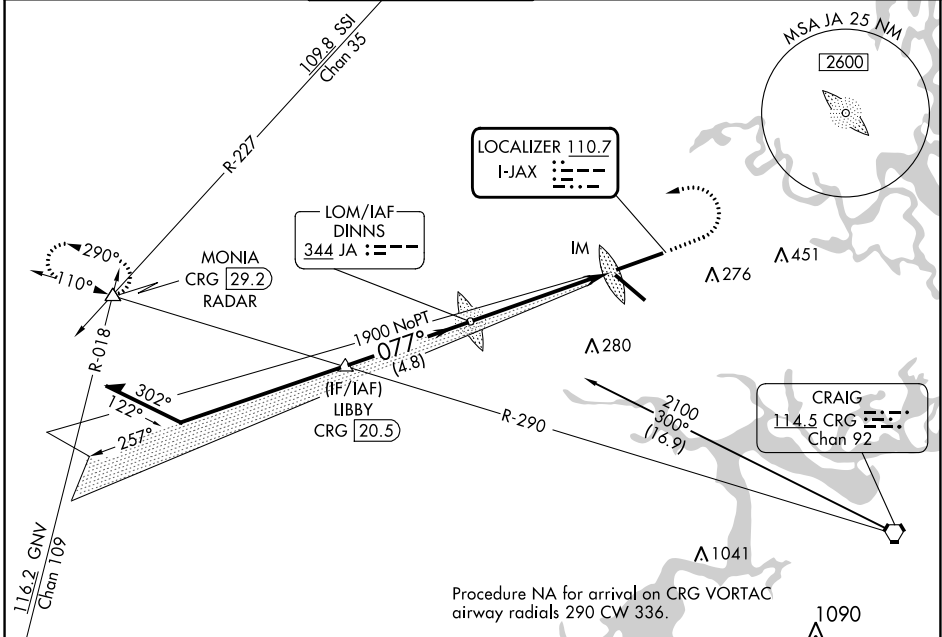
LOC I-JAX 110.7	APP CRS 077°	Rwy ldg 10000 TDZE 30 Apt Elev 30
---------------------------	------------------------	--

ILS Y or LOC Y RWY 8

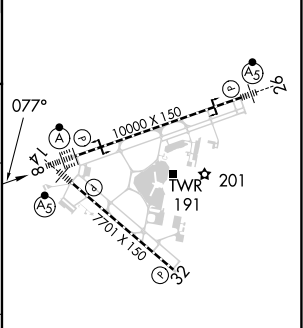
JACKSONVILLE INTL (JAX)

<p>For inop ALS, increase S-ILS 8 Cat E visibility to RVR 4000 and S-LOC 8 Cat E visibility to 1 1/2 SM.</p>	<p>ALSIF-2</p>	<p>MISSED APPROACH: Climb to 1000 then climbing left turn to 3000 on heading 250° and on CRG VORTAC R-290 to MONIA INT/CRG 29.2 DME/RADAR and hold.</p>

D-ATIS 125.85	JACKSONVILLE APP CON 119.0 269.9	JACKSONVILLE TOWER 118.3 317.7	GND CON 121.9 348.6	CLNC DEL 119.5 290.275	CPDLC
-------------------------	--	--	-------------------------------	----------------------------------	-------



ELEV 30	TDZE 30
---------	---------



CATEGORY	A	B	C	D	E
S-ILS 8	230/18 200 (200-1/2)				
S-LOC 8	480/24	450 (500-1/2)	480/45 450 (500-3/4)		
CIRCLING	520-1	490 (500-1)	580-1 1/2 550 (600-1 1/2)	580-2 550 (600-2)	760-2 1/2 730 (800-2 1/2)

REIL Rwy 32 TDZ/CL Rwy 8, 14, and 26 HIRL Rwy 8-26 and 14-32	FAF to MAP 5.6 NM					
	Knots	60	90	120	150	180
	Min:Sec	5:36	3:44	2:48	2:14	1:52

SE-3, 05 SEP 2024 to 03 OCT 2024

SE-3, 05 SEP 2024 to 03 OCT 2024