

WAAS CH 86430 W32A	APP CRS 321°	Rwy Idg TDZE 1028 Apt Elev 1034	3999
--	------------------------	---	-------------

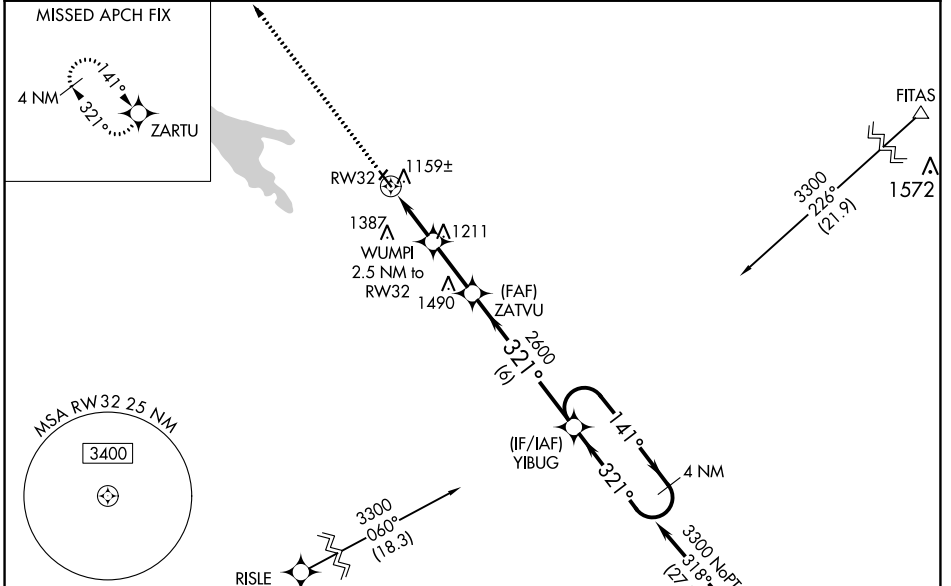
RNAV (GPS) RWY 32

MONTEVIDEO-CHIPPEWA COUNTY (MVE)

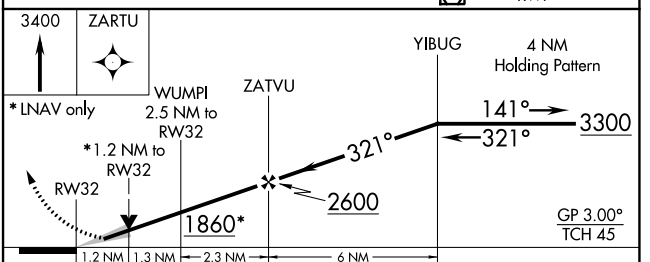
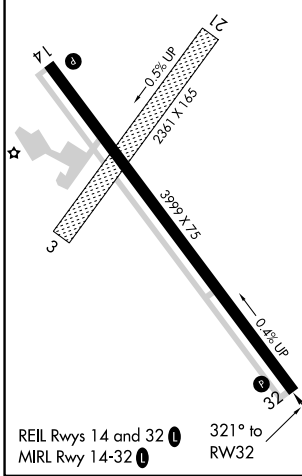
⚠ Circling to Rwy 14 NA at night. Baro-VNAV NA when using Granite Falls altimeter setting. For uncompensated Baro-VNAV systems, LNAV/VNAV NA below -30°C (-22°F) or above 54°C (130°F).
⚠ When local altimeter setting not received, use Granite Falls altimeter setting and increase LPV DA to 1270 feet; increase LNAV/VNAV DA to 1464 feet and increase visibility all Cats 1/8 SM; increase all MDAs 40 feet and LNAV visibility Cats C/D 1/8 SM and Circling visibility Cats C/D 1/4 SM.
 DME/DME RNP -0.3 NA. Circling to Rwy 3-21 NA. Helicopter visibility reduction below 1 SM NA.

MISSED APPROACH:
Climb to 3400 direct ZARTU and hold.

AWOS-3 111.6	MINNEAPOLIS CENTER 125.5 323.1	UNICOM 122.8 (CTAF) 0
------------------------	--	---------------------------------



ELEV 1034	TDZE 1028
-----------	-----------



CATEGORY	A	B	C	D
LPV DA	1234-1 206 (200-1)			
LNAV/VNAV DA	1428-1 3/8 400 (400-1 3/8)			
LNAV MDA	1420-1	392 (400-1)	1420-1 1/8	392 (400-1 1/8)
CIRCLING	1560-1	526 (600-1)	1770-1 3/4 666 (700-1 3/4)	1700-2 666 (700-2)

NC-1, 26 JAN 2023 to 23 FEB 2023

NC-1, 26 JAN 2023 to 23 FEB 2023