

WAAS CH <b>58030</b> <b>W14A</b>	APP CRS <b>141°</b>	Rwy Idg TDZE Apt Elev	<b>3999</b> <b>1034</b> <b>1034</b>
--	------------------------	-----------------------------	---

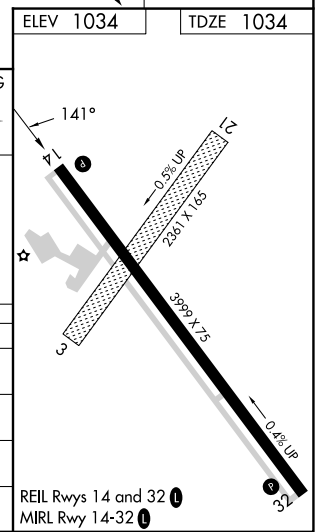
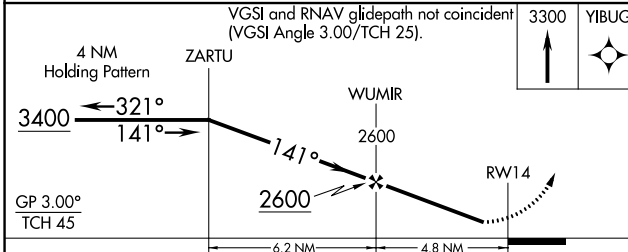
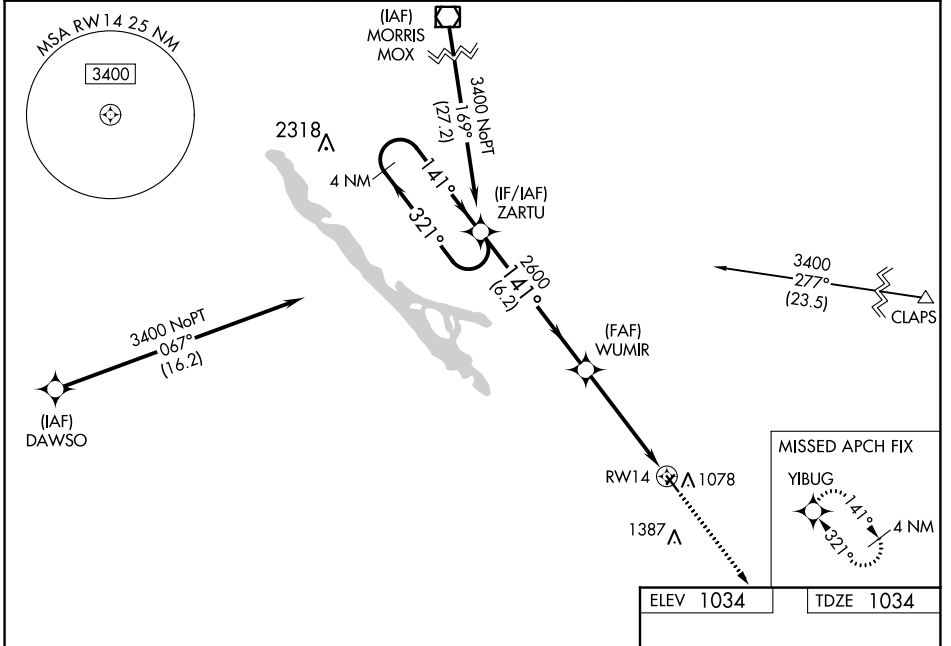
# RNAV (GPS) RWY 14

MONTEVIDEO-CHIPPEWA COUNTY (MVE)

**⚠** Baro-VNAV NA when using Granite Falls altimeter setting. For uncompensated Baro-VNAV systems, LNAV/VNAV NA below -30°C (-22°F) or above 54°C (130°F). When local altimeter setting not received, use Granite Falls altimeter setting and increase LPV DA to 1320 feet; increase LNAV/VNAV DA to 1320 feet; increase all MDAs 40 feet and LNAV visibility Cats C/D ½ SM and Circling visibility Cats C/D ¼ SM. DME/DME RNP-0.3 NA. Helicopter visibility reduction below 1 SM NA. When VGSi inop, Straight-in and Circling Rwy 14 procedures NA at night. Circling to Rwy 3-21 NA.

**MISSED APPROACH:**  
Climb to 3300 direct YIBUG and hold.

AWOS-3 <b>111.6</b>	MINNEAPOLIS CENTER <b>125.5 323.1</b>	UNICOM <b>122.8 (CTAF) 0</b>
------------------------	--	---------------------------------



CATEGORY	A	B	C	D
LPV DA		1284-1	250 (300-1)	
LNAV/VNAV DA		1284-1	250 (300-1)	
LNAV MDA	1520-1 486 (500-1)		1520-1¾ 486 (500-1¾)	
CIRCLING	1560-1 526 (600-1)		1700-1¾ 666 (700-1¾)	1700-2 666 (700-2)

NC-1, 26 JAN 2023 to 23 FEB 2023

NC-1, 26 JAN 2023 to 23 FEB 2023