

WAAS CH <b>65932</b> <b>W31A</b>	APP CRS <b>315°</b>	Rwy Idg TDZE Apt Elev	<b>3591</b> <b>1447</b> <b>1447</b>
--	------------------------	-----------------------------	---

# RNAV (GPS) RWY 31

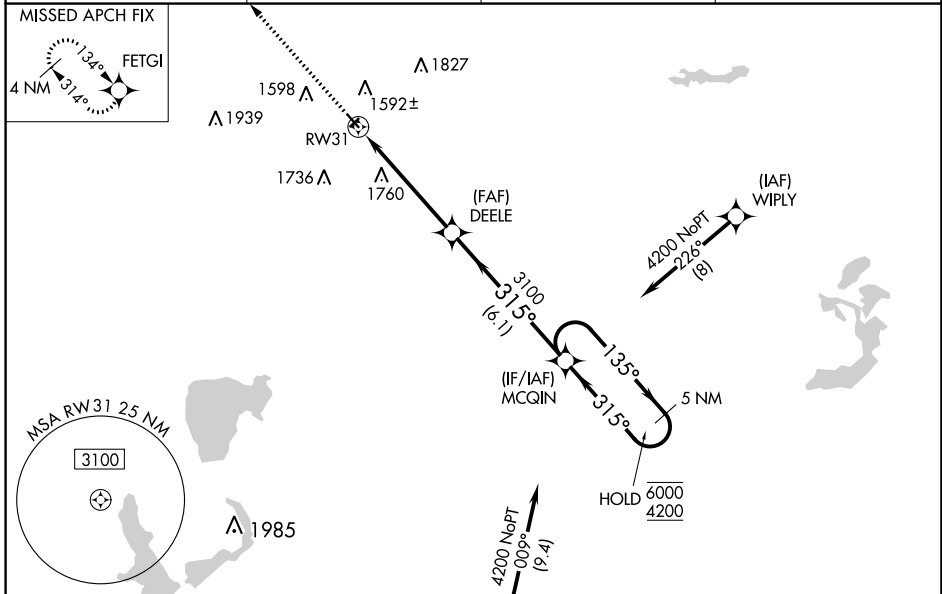
JACKSON MUNI (MJQ)

RNP APCH.

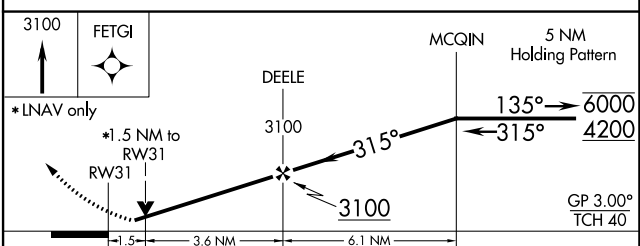
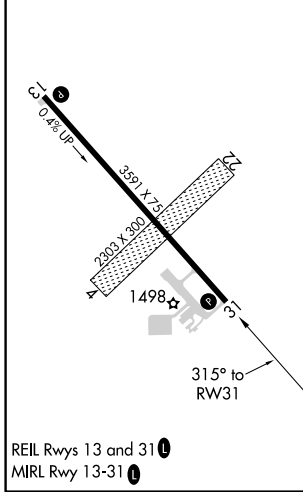
**▽** Rwy 31 helicopter visibility reduction below 3/4 SM NA. For uncompensated Baro-VNAV systems, LNAV/VNAV NA below -17°C or above 54°C. Circling NA to Rwy 4 and 22.

MISSED APPROACH:  
Climb to 3100 direct FETGI and hold.

AWOS-3 <b>118.1</b>	MINNEAPOLIS CENTER <b>127.75 257.7</b>	GCO <b>121.725</b>	UNICOM <b>122.8</b> (CTAF) <b>0</b>
------------------------	---	-----------------------	--



ELEV 1447	TDZE 1447
-----------	-----------



CATEGORY	A	B	C	D
LPV DA	1697-1	250 (300-1)		NA
LNAV/VNAV DA	1891-1½	444 (500-1½)		NA
LNAV MDA	1980-1	533 (600-1)	1980-1½ 533 (600-1½)	NA
<b>C</b> CIRCLING	2100-1	653 (700-1)	2180-2 733 (800-2)	NA

NC-1, 17 JUN 2021 to 15 JUL 2021

NC-1, 17 JUN 2021 to 15 JUL 2021