

|  |                        |   |
|--|------------------------|---|
| WAAS<br>CH <b>58307</b><br><b>W16A</b> | APP CRS<br><b>161°</b> | Rwy ldg <b>4002</b><br>TDZE <b>168</b><br>Apt Elev <b>168</b> |
|--|------------------------|---|

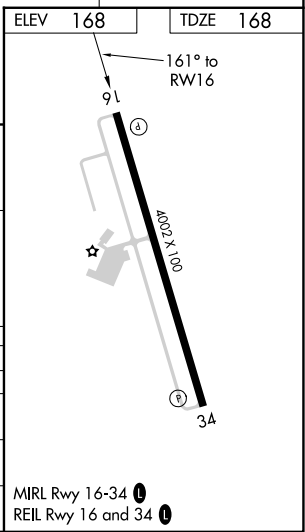
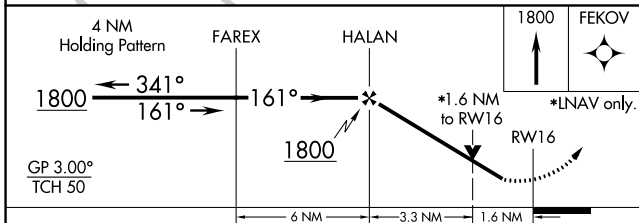
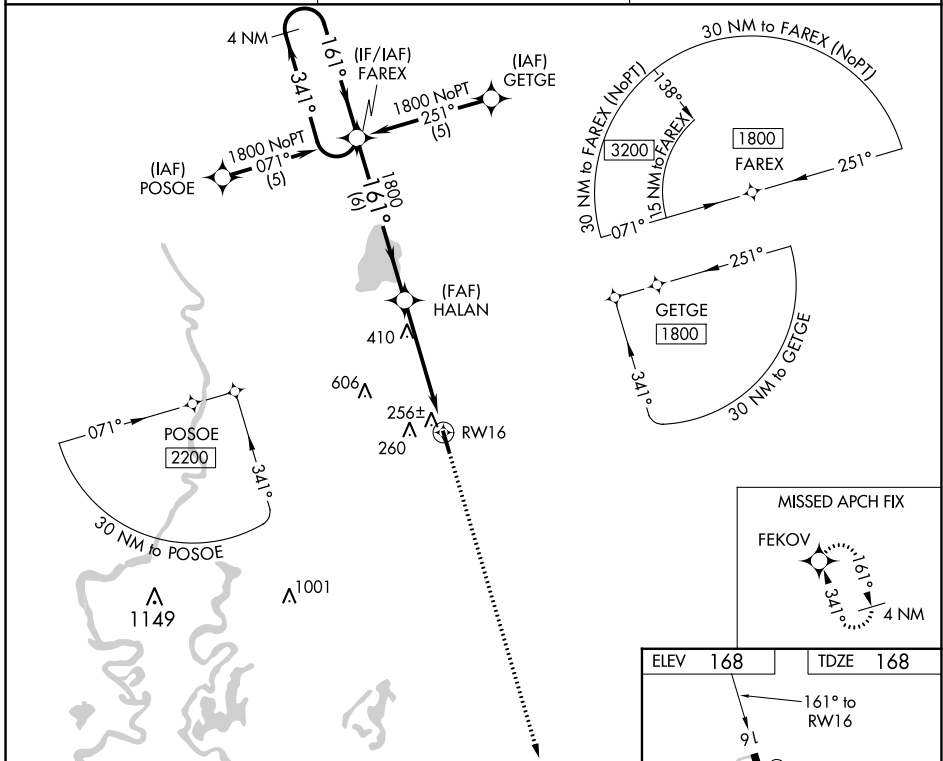
# RNAV (GPS) RWY 16

MOREHOUSE MEML (BQP)

**⚠** For uncompensated Baro-VNAV systems, LNAV/VNAV NA below -15°C (5°F) or above 34°C (130°F). DME/DME RNP-0.3 NA. Visibility reduction by helicopters NA. When local altimeter setting not received, use Monroe altimeter setting and increase LPV DA to 550, LNAV/VNAV DA to 577 and all MDA 60 feet; increase LNAV Cat C visibility 1/8 SM and Circling Cat C visibility 1/4 SM. Baro-VNAV NA when using Monroe altimeter setting. VDP NA when using Monroe altimeter setting.

**MISSED APPROACH:**  
Climb to 1800 direct FEKOV and hold.

|                            |  |                                 |
|----------------------------|--|---------------------------------|
| AWOS-3PT<br><b>118.375</b> | MONROE APP CON ★<br><b>126.9 307.9</b> | UNICOM<br><b>122.8 (CTAF) 0</b> |
|----------------------------|--|---------------------------------|



| CATEGORY     | A                    | B                    | C                      | D  |
|--------------|----------------------|----------------------|------------------------|----|
| LPV DA       | 499-1¼               | 331 (400-1¼)         |                        | NA |
| LNAV/VNAV DA | 526-1¼               | 358 (400-1¼)         |                        | NA |
| LNAV MDA     | 720-1                | 552 (600-1)          | 720-1½<br>552 (600-1½) | NA |
| CIRCLING     | 720-1<br>552 (600-1) | 780-1<br>612 (700-1) | 820-1¾<br>652 (700-1¾) | NA |

# RNAV (GPS) RWY 16

SC-4, 18 MAY 2023 to 15 JUN 2023

SC-4, 18 MAY 2023 to 15 JUN 2023