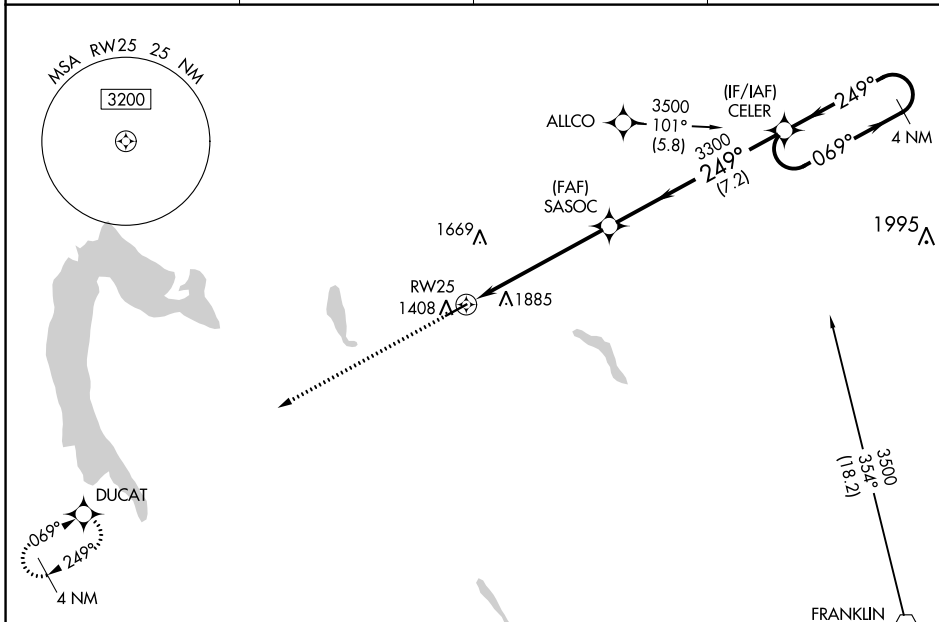


WAAS CH 45924 W25A	APP CRS 249°	Rwy ldg TDZE Apt Elev	5001 1399 1399
---------------------------------	------------------------	-----------------------------	---

RNAV (GPS) RWY 25

PORT MEADVILLE (GKJ)

RNP APCH.		MALS	MISSED APPROACH: Climb to 3000 direct DUCAT and hold.
<p>⚠ Inop table does not apply to LP Cats A and B, and LNAV Cat A. For inop ALS increase LNAV Cats C and D visibility to 2 SM.</p>			
ASOS 121.425	YOUNGSTOWN APP CON * 133.95 322.3	CLNC DEL 124.95	UNICOM 123.0 (CTAF)

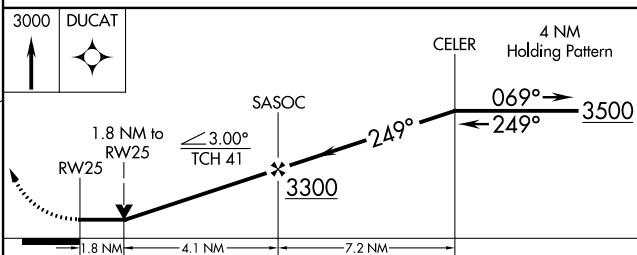
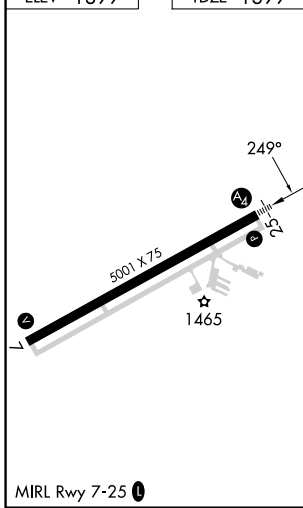


NE-4, 03 OCT 2024 to 31 OCT 2024

NE-4, 03 OCT 2024 to 31 OCT 2024

ELEV 1399	TDZE 1399
-----------	-----------

Procedure NA for arrival on FKL VOR airway radials 280 CW 056.



	CATEGORY	A	B	C	D
LP	MDA	2060-1	661 (700-1)	2060-1½	661 (700-1½)
	LNAV MDA	2140-1	741 (800-1)	2140-1¾	741 (800-1¾)
	CIRCLING	2140-1 741 (800-1)	2240-1¼ 841 (900-1¼)	2240-2½ 841 (900-2½)	2240-2¾ 841 (900-2¾)