

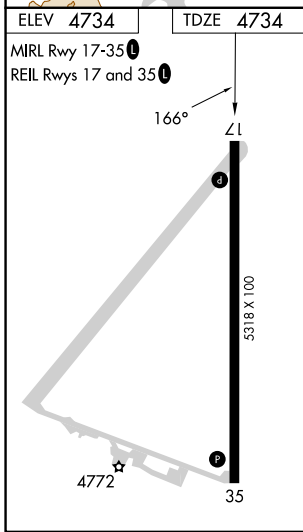
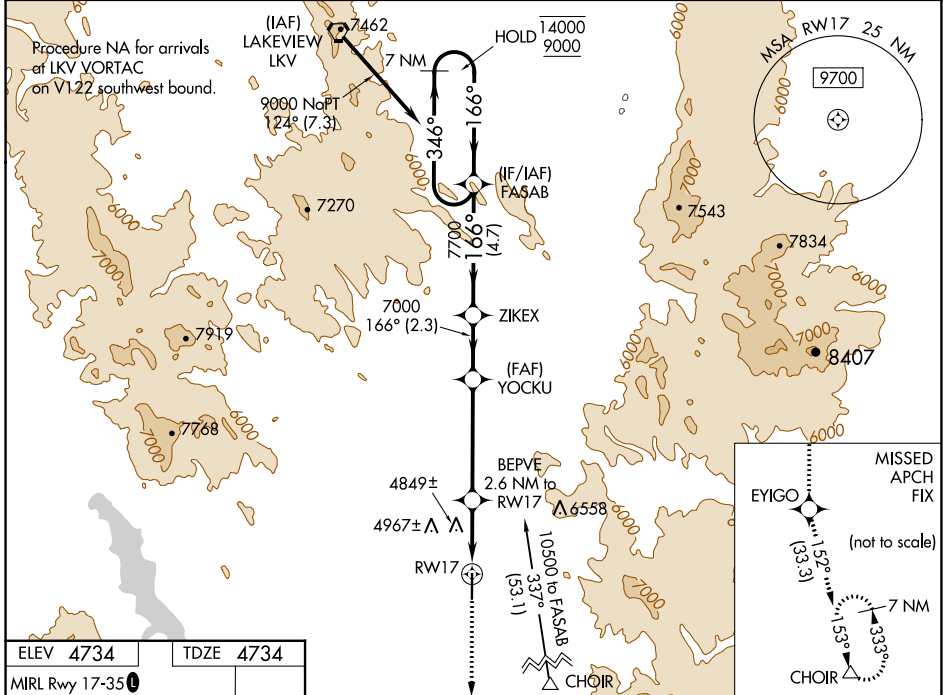
WAAS CH 93532 W17A	APP CRS 166°	Rwy Idg TDZE Apt Elev	5318 4734 4734
--	------------------------	-----------------------------	---

RNAV (GPS) RWY 17

LAKE COUNTY (LKV)

RNP APCH. ▼ ▲ ⚠ -26°C	Circling NA east of Rwy 17-35. For uncompensated Baro-VNAV systems, LNAV/VNAV NA below +24°C or above 50°C.	MISSED APPROACH: Climb to 11000 direct EYIGO and on track 152° to CHOIR and hold.
-----------------------------------	---	---

AWOS-3PT 135.525	SEATTLE CENTER 127.6 346.35	UNICOM 122.8 (CTAF) 0
----------------------------	---------------------------------------	---------------------------------



ELEV 4734	TDZE 4734						
MIRL Rwy 17-35	REIL Rwys 17 and 35	11000	EYIGO	tr 152°	CHOIR	FASAB	7 NM Holding Pattern
		*LNAV only.	BEPVE 2.6 NM to RWY17	YOCKU 7000	ZIKEX		
		*1 NM to RWY17		7000			
		1 NM	1.6 NM	4.3 NM	2.3 NM	4.7 NM	
CATEGORY		A	B	C	D		
LPV DA			4984-1	250 (300-1)			
LNAV/VNAV DA			5139-1½	405 (500-1½)			
LNAV MDA			5100-1	366 (400-1)			
CIRCLING		5160-1 426 (500-1)	5220-1 486 (500-1)	5460-2 726 (800-2)	5500-2½ 766 (800-2½)		

NW-1, 03 OCT 2024 to 31 OCT 2024

NW-1, 03 OCT 2024 to 31 OCT 2024