

PRYOR, OKLAHOMA

AL-5550 (FAA)

22195

WAAS CH 93938 W18A	APP CRS 178°	Rwy Idg TDZE 622 Apt Elev 622
----------------------------------------	------------------------	---------------------------------------------------

RNAV (GPS) RWY 18

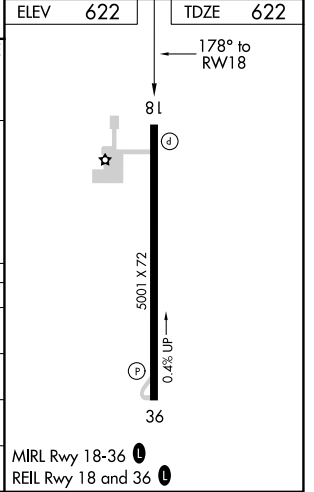
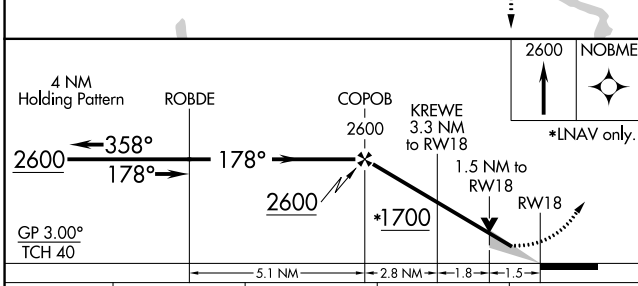
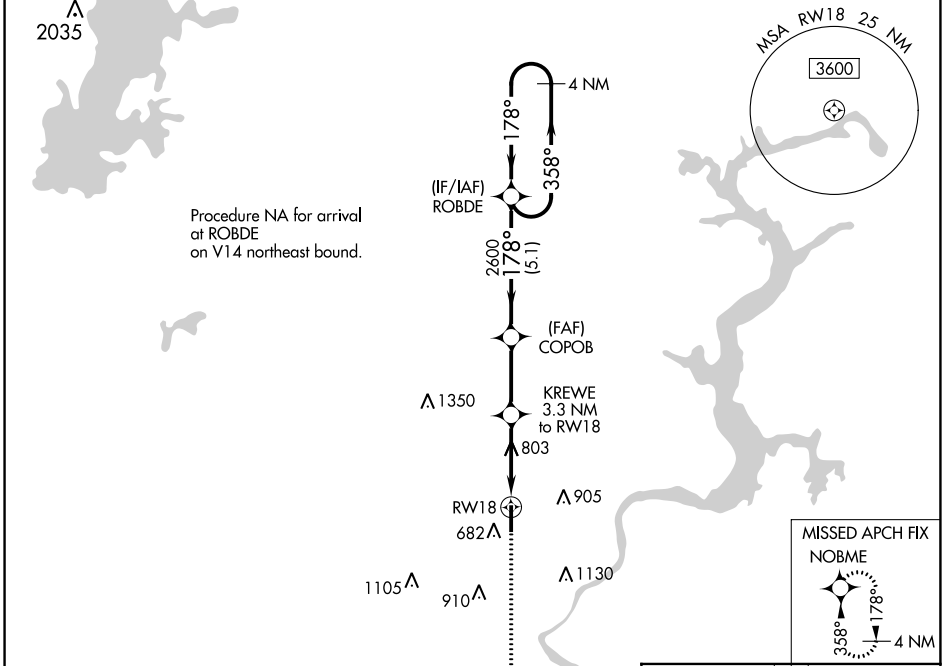
MID-AMERICA INDUSTRIAL (H71)

RNP APCH - GPS.

NA Circling Rwy 36 NA at night. For uncompensated Baro-VNAV systems, LNAV/VNAV NA below -1.6°C or above 54°C.

MISSED APPROACH: Climb to 2600 direct NOBME and hold.

AWOS 3-PT 120.1	TUL ASOS 124.9 377.2	TULSA APP CON 119.1 360.825	UNICOM 122.8 (CTAF)
---------------------------	--------------------------------	---------------------------------------	-------------------------------



CATEGORY	A	B	C	D
LPV DA	943-1 $\frac{1}{8}$	321 (400-1 $\frac{1}{8}$)		NA
LNAV/VNAV DA	1108-1 $\frac{5}{8}$	486 (500-1 $\frac{5}{8}$)		NA
LNAV MDA	1140-1	518 (600-1)	1140-1 $\frac{3}{8}$ 518 (600-1 $\frac{3}{8}$)	NA
C CIRCLING	1200-1	578 (600-1)	1560-2 $\frac{3}{4}$ 938 (1000-2 $\frac{3}{4}$)	NA

PRYOR, OKLAHOMA
Orig-A 14JUL22

36°14'N-95°20'W

RNAV (GPS) RWY 18

MID-AMERICA INDUSTRIAL (H71)

SC-1, 03 OCT 2024 to 31 OCT 2024

SC-1, 03 OCT 2024 to 31 OCT 2024