

WAAS CH 97525 W31A	APP CRS 313°	Rwy Idg TDZE 725 Apt Elev 727	4501
--	------------------------	---	-------------

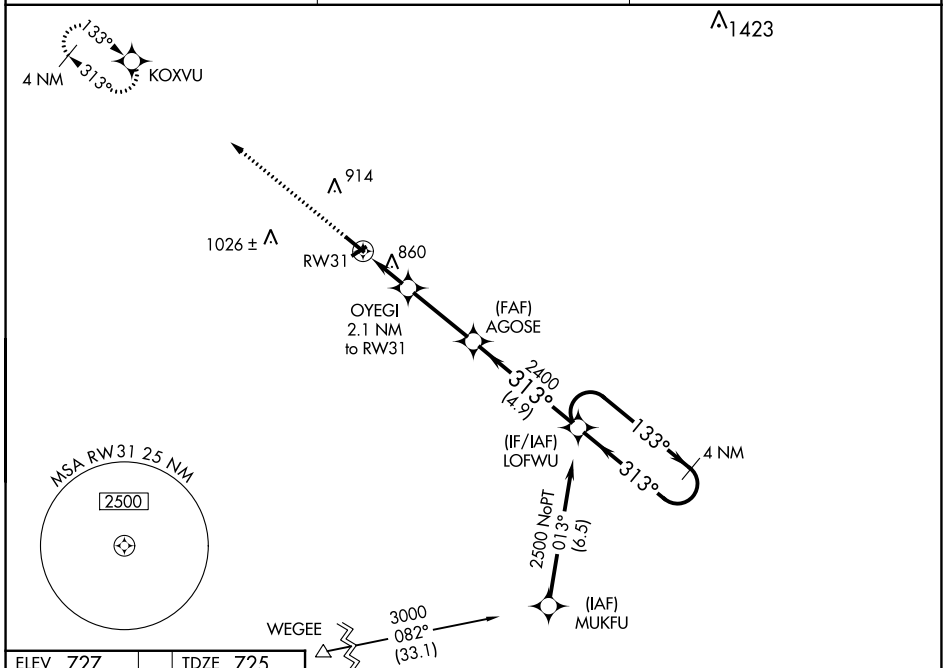
RNAV (GPS) RWY 31

VIRGIL I GRISSOM MUNI (BFR)

∇ DME/DME RNP-0.3 NA. When local altimeter setting not received, use Bloomington altimeter setting and increase all MDA 80 feet; increase all Cat C/D visibilities ¼ mile. Procedure NA at night. Helicopter visibility reduction below 1 SM NA.

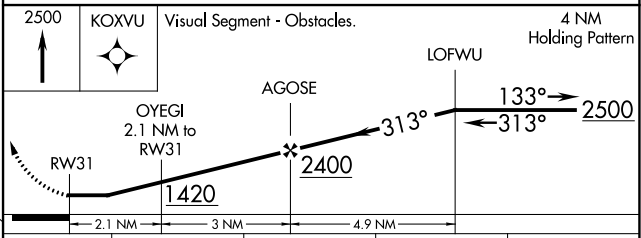
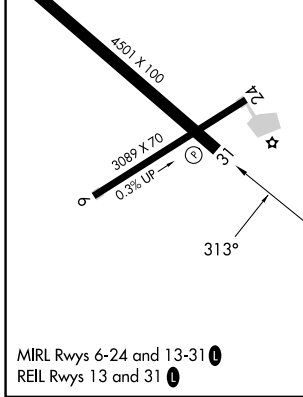
▲ NA MISSED APPROACH: Climb to 2500 direct KOXVU and hold.

AWOS-3 119.125	LOUISVILLE APP CON 132.075 327.0	UNICOM 122.8 (CTAF) 0
--------------------------	--	---------------------------------



ELEV 727	TDZE 725
-----------------	-----------------

Procedure NA for arrivals at WESEE on V305 southwest bound.



CATEGORY	A	B	C	D
LP MDA	1160-1	435 (500-1)	1160-1¼	435 (500-1¼)
LNAV MDA	1180-1	455 (500-1)	1180-1⅜	455 (500-1⅜)
C CIRCLING	1220-1 493 (500-1)	1260-1 533 (600-1)	1380-1¼ 653 (700-1¼)	1380-2 653 (700-2)

EC-2, 03 OCT 2024 to 31 OCT 2024

EC-2, 03 OCT 2024 to 31 OCT 2024