

APP CRS	Rwy Idg	3900
036°	TDZE	833
	Apt Elev	833

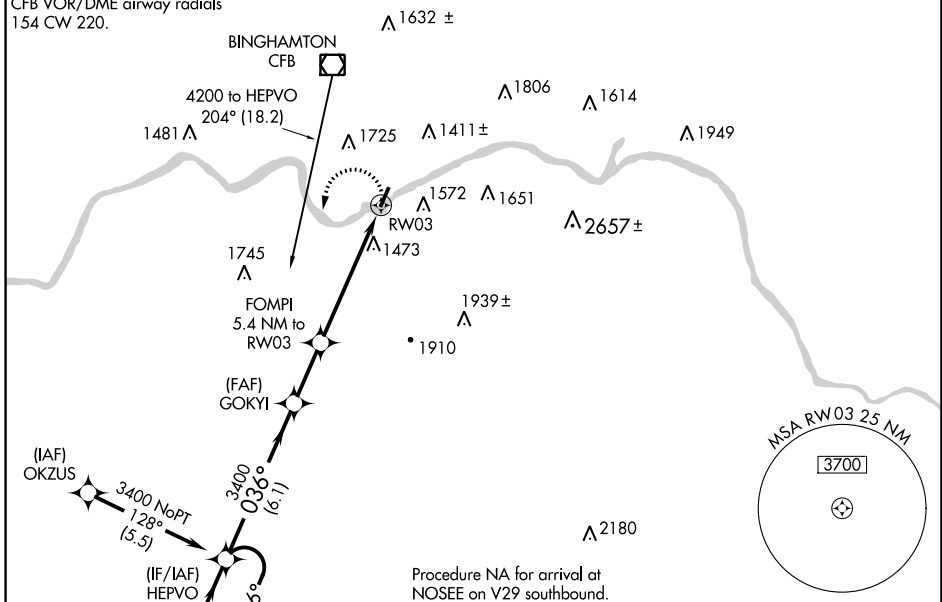
RNAV (GPS) RWY 3

TRI-CITIES (CZG)

NA -17°C	DME/DME RNP-0.3 NA. Procedure NA at night. Rwy 3 helicopter visibility reduction below 1 SM NA.	MISSED APPROACH: Climbing left turn to 3400 direct HEPVO and hold.
--------------------	--	--

AWOS-3 119.075	BINGHAMTON APP CON ★ 118.6 257.625	CLNC DEL 121.7	UNICOM 122.8 (CTAF) 0
--------------------------	--	--------------------------	--

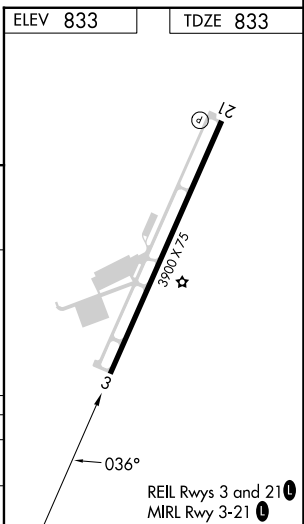
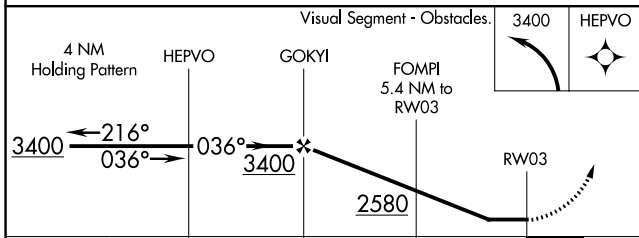
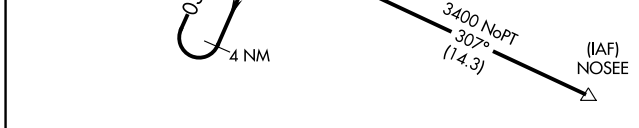
Procedure NA for arrival on CFB VOR/DME airway radials 154 CW 220.



NE-2, 31 OCT 2024 to 28 NOV 2024

NE-2, 31 OCT 2024 to 28 NOV 2024

ELEV 833	TDZE 833
----------	----------



CATEGORY	A	B	C	D
LNAV MDA	2160-1¼ 1327 (1400-1¼)	2160-1½ 1327 (1400-1½)		NA
CIRCLING	2160-1¼ 1327 (1400-1¼)	2160-1½ 1327 (1400-1½)		NA