

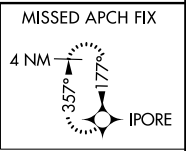
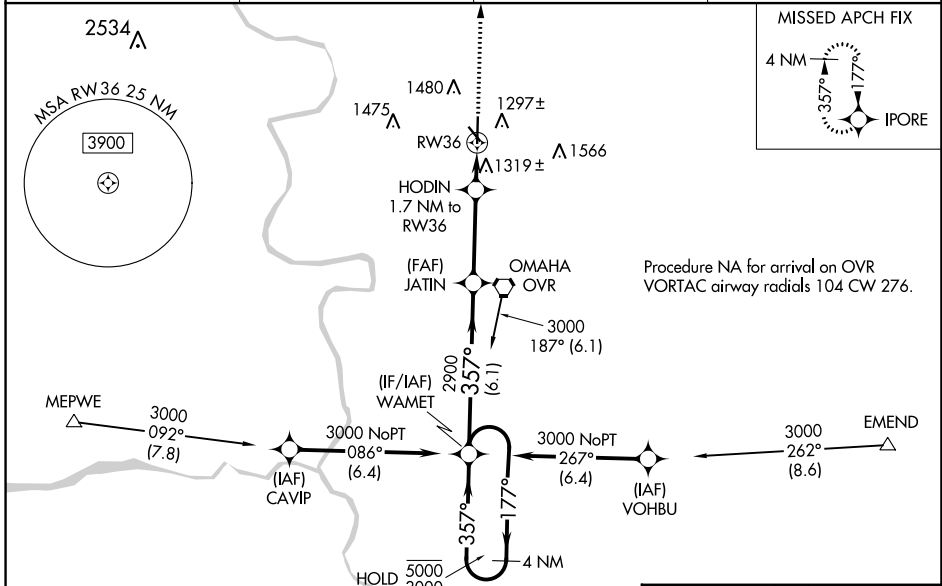
WAAS CH <b>53606</b> <b>W36A</b>	APP CRS <b>357°</b>	Rwy Idg TDZE <b>1245</b> Apt Elev <b>1245</b>
--	------------------------	---

# RNAV (GPS) RWY 36

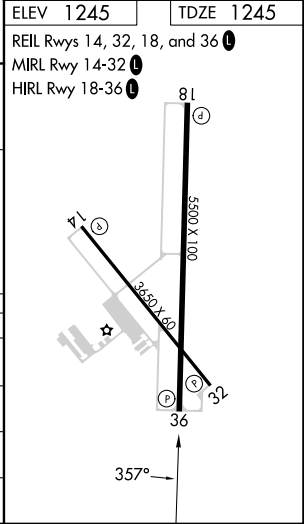
COUNCIL BLUFFS MUNI (CBF)

RNP APCH.	<p>MISSED APPROACH: Climb to 3000 direct IPORE and hold.</p>
<p>Baro-VNAV and VDP NA when using Eppley Airfield altimeter setting. For uncompensated Baro-VNAV systems, LNAV/VNAV NA below -17°C or above 54°C. When local altimeter setting not received, use Eppley Airfield altimeter setting and increase LPV DA to 1498 feet, LNAV/VNAV DA to 1548 feet, and all MDA 60 feet and increase LNAV/VNAV all Cats visibility 1/2 SM, LNAV Cat C and D visibility 1/2 SM, and Circling Cat C and D visibility 1/4 SM.</p>	

AWOS-3 <b>126.575</b>	OMAHA APP CON <b>124.5 263.0</b>	CLNC DEL <b>127.675</b>	UNICOM <b>122.725 (CTAF)</b>
--------------------------	-------------------------------------	----------------------------	---------------------------------



4 NM Holding Pattern 5000 ← 177° 3000 → 357° GP 3.00° TCH 50	WAMET	JATIN	HODIN	IPORE
	6.1 NM	3.4 NM	0.8 NM	0.9 NM
*1820 *0.9 NM to RW36 *NAV only				
CATEGORY	A	B	C	D
LPV DA	1445-3/4 200 (200-3/4)			
LNAV/VNAV DA	1495-3/4 250 (300-3/4)			
LNAV MDA	1580-1 335 (400-1)			
CIRCLING	1780-1 535 (600-1)	1840-1 595 (600-1)	1840-1 1/2 595 (600-1 1/2)	1880-2 635 (700-2)



NC-3, 31 OCT 2024 to 28 NOV 2024

NC-3, 31 OCT 2024 to 28 NOV 2024