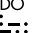



EL DORADO ONE DEPARTURE

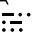
ATIS ★
 118.125
 CLNC DEL
 121.4
 CLNC DEL
 119.25 (when twr closed)
 GND CON
 121.4
 SUGAR LAND TOWER ★
 118.65 (CTAF)
 HOUSTON DEP CON
 123.8 257.7

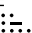
**TOP ALTITUDE:
ASSIGNED BY ATC**

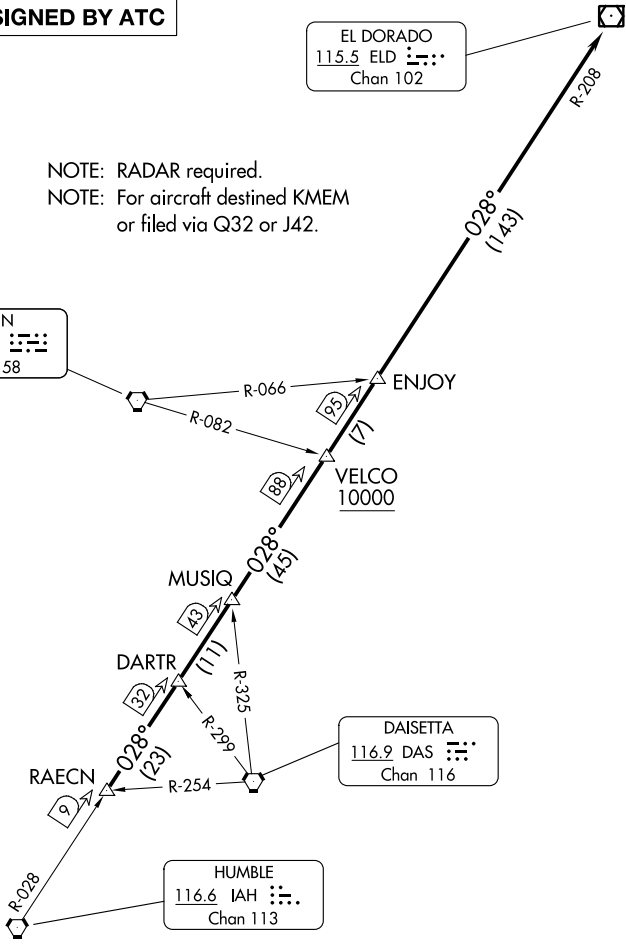
EL DORADO
 115.5 ELD 
 Chan 102

NOTE: RADAR required.
 NOTE: For aircraft destined KMEM
 or filed via Q32 or J42.

LUFKIN
 112.1 LFK 
 Chan 58

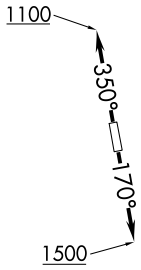
DAISSETA
 116.9 DAS 
 Chan 116

HUMBLE
 116.6 IAH 
 Chan 113



SC-5, 31 OCT 2024 to 28 NOV 2024

SC-5, 31 OCT 2024 to 28 NOV 2024



TAKEOFF MINIMUMS
 Rwy's 17, 35: Standard.

NOTE: Chart not to scale.

(CONTINUED ON FOLLOWING PAGE)

EL DORADO ONE DEPARTURE