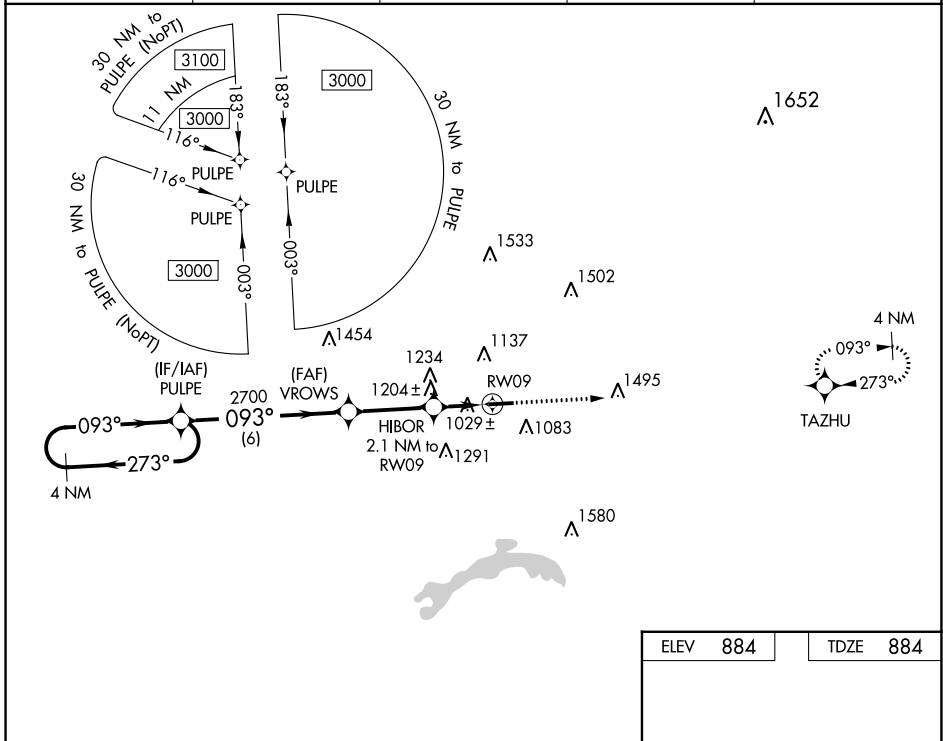


WAAS CH 57939 W09A	APP CRS 093°	Rwy Idg TDZE Apt Elev	4192 884 884
--	------------------------	-----------------------------	---

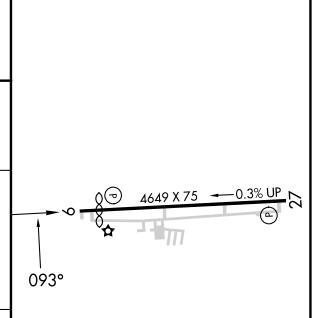
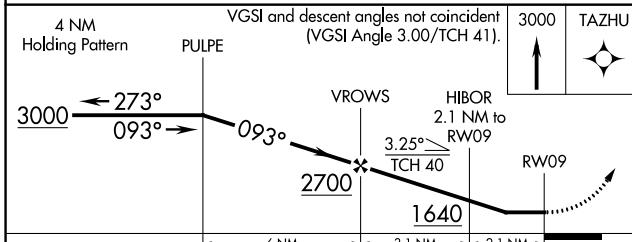
RNAV (GPS) RWY 9
LICKING COUNTY RGNL (VTA)

<p>▼ ▲</p> <p>Rwy 9 helicopter visibility reduction below 1 SM NA. DME/DME RNP-0.3 NA. Straight-in Rwy 9 NA at night, Circling Rwy 9 NA at night.</p>	<p>MISSED APPROACH: Climb to 3000 direct TAZHU and hold.</p>
---	--

ASOS 121.125	COLUMBUS APP CON 125.95 317.775	CLNC DEL 125.175	UNICOM 122.7 (CTAF)	123.3 0
------------------------	---	----------------------------	-------------------------------	-----------------------



ELEV	884	TDZE	884
------	------------	------	------------



CATEGORY	A		B		C		D	
	LP MDA	1280-1	396 (400-1)	1280-1	396 (400-1)	1280-1 1/8	396 (400-1 1/8)	1280-1 1/8
LNAV MDA	1460-1	576 (600-1)	1460-1	576 (600-1)	1460-1 5/8	576 (600-1 5/8)	1460-1 5/8	576 (600-1 5/8)
C CIRCLING	1460-1 576 (600-1)	1480-1 596 (600-1)	1760-2 1/2 876 (900-2 1/2)	1760-2 3/4 876 (900-2 3/4)	1760-2 1/2 876 (900-2 1/2)	1760-2 3/4 876 (900-2 3/4)	1760-2 1/2 876 (900-2 1/2)	1760-2 3/4 876 (900-2 3/4)

MRL Rwy 9-27 **0**
REIL Rwy 9 and 27 **0**

EC-2, 31 OCT 2024 to 28 NOV 2024

EC-2, 31 OCT 2024 to 28 NOV 2024