

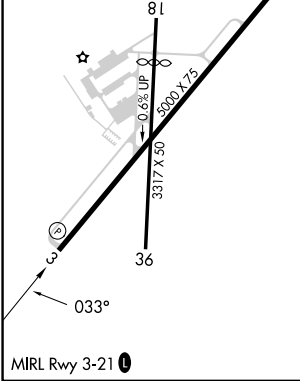
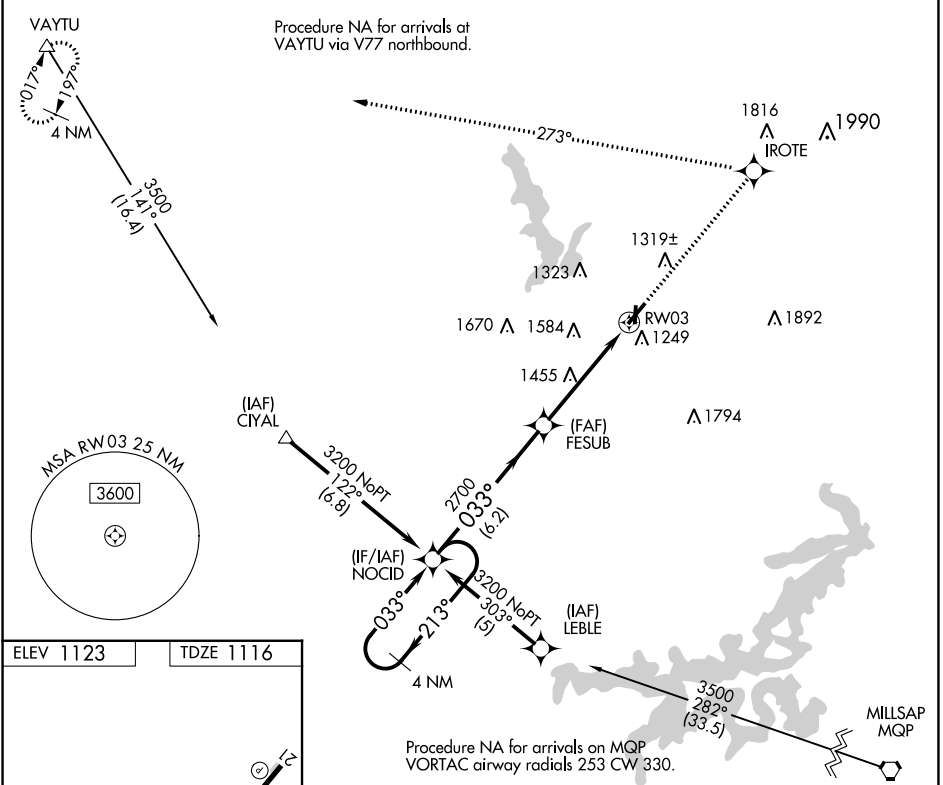
APP CRS	Rwy Idg	<b>5000</b>
<b>033°</b>	TDZE	<b>1116</b>
	Apt Elev	<b>1123</b>

# RNAV (GPS) RWY 3

GRAHAM MUNI (RPH)

RNP APCH.	MISSED APPROACH: Climb to 3900 direct IROTE and left turn via 273° track to VAYTU and hold.
<p>▼ When local altimeter setting not received, use Mineral Wells altimeter setting and increase all MDAs 100 feet and increase LNAV and Circling Cat B visibility ¼ mile.</p> <p>▲ Rwy 3 helicopter visibility reduction below 1 SM NA. Procedure NA at night.</p>	

AWOS-3P <b>118.025</b>	FORT WORTH CENTER <b>127.0 360.6</b>	UNICOM <b>122.975</b> (CTAF) <b>0</b>
---------------------------	---	--



3900	↑ IROTE	↶ 273° tr	VAYTU	
Visual Segment - Obstacles.				
CATEGORY	A	B	C	D
LNAV MDA	1760-1	644 (700-1)	NA	
CIRCLING	1760-1	637 (700-1)	NA	

SC-2, 03 OCT 2024 to 31 OCT 2024

SC-2, 03 OCT 2024 to 31 OCT 2024