

| | | | |
|--|------------------------|-----------------------------|---|
| WAAS CH 69532 W10A | APP CRS 103° | Rwy Idg TDZE Apt Elev | 5006 897 906 |
|--|------------------------|-----------------------------|---|

RNAV (GPS) RWY 10

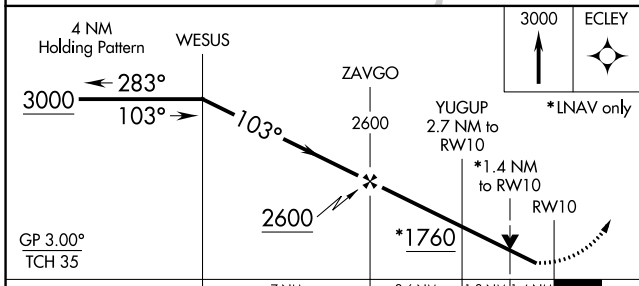
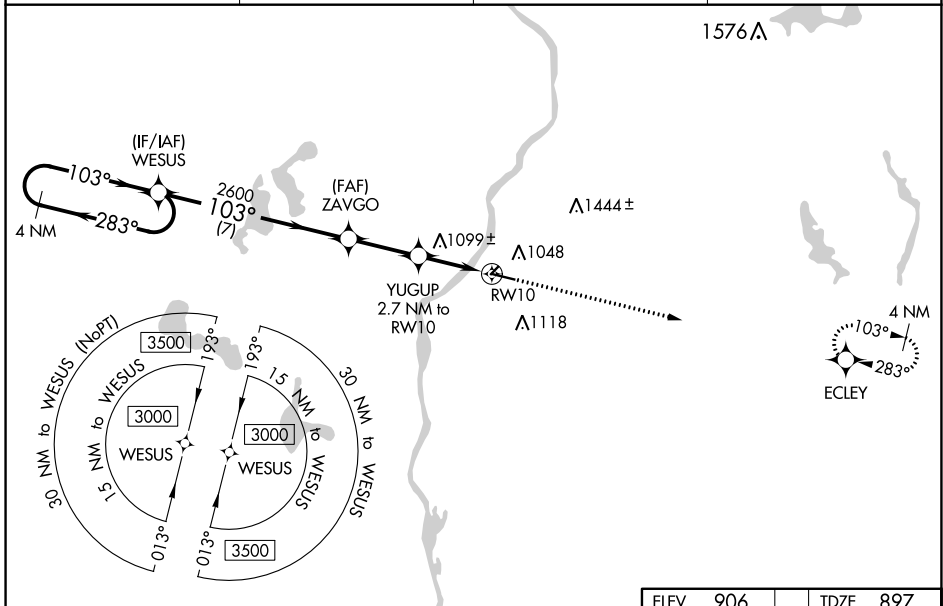
L O SIMENSTAD MUNI (O/E O)

RNP APCH - GPS.

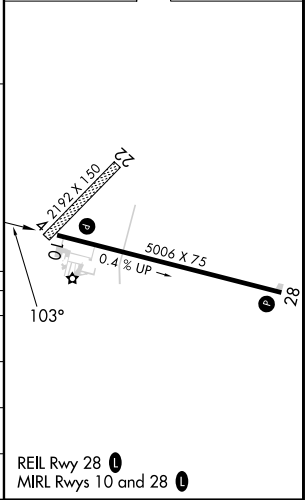
⚠ For uncompensated Baro-VNAV systems, LNAV/VNAV NA below -16°C or above 54°C. VDP and Baro-VNAV NA when using Anoka County/Blaine (Janes Fld) altimeter setting. When local altimeter setting not received, use Anoka County/Blaine (Janes Fld) altimeter setting; increase LPV DA to 1204 feet and visibility all Cats ¼ SM; increase LNAV/VNAV DA to 1247 feet and visibility all Cats ¼ SM; increase all MDAs 60 feet and visibility LNAV Cat C ¼ SM and Circling Cat C ¼ SM. Rwy 10 helicopter visibility reduction below ¾ SM NA. Circling NA to Rws 4 and 22.

MISSED APPROACH: Climb to 3000 direct ECLEY and hold.

| | | | |
|--------------------------|--|-----------------------|----------------------|
| AWOS-3 119.925 | MINNEAPOLIS APP CON 121.2 335.65 | GCO 121.725 | CTAF 122.9 |
|--------------------------|--|-----------------------|----------------------|



| | | | |
|------|-----|------|-----|
| ELEV | 906 | TDZE | 897 |
|------|-----|------|-----|



| CATEGORY | A | B | C | D |
|--------------|-----------------------|-----------------------|-------------------------------|----|
| LPV DA | 1147-7/8 | 250 (300-7/8) | | NA |
| LNAV/VNAV DA | 1190-1 | 293 (300-1) | | NA |
| LNAV MDA | 1360-1 | 463 (500-1) | 1360-1 3/8 463 (500-1 3/8) | NA |
| CIRCLING | 1360-1 454 (500-1) | 1500-1 594 (600-1) | 1520-1 3/4 614 (700-1 3/4) | NA |