

WAAS CH <b>42738</b> <b>W02A</b>	APP CRS <b>017°</b>	Rwy Idg <b>6904</b> TDZE <b>24</b> Apt Elev <b>26</b>
--	------------------------	---

# RNAV (GPS) RWY 2

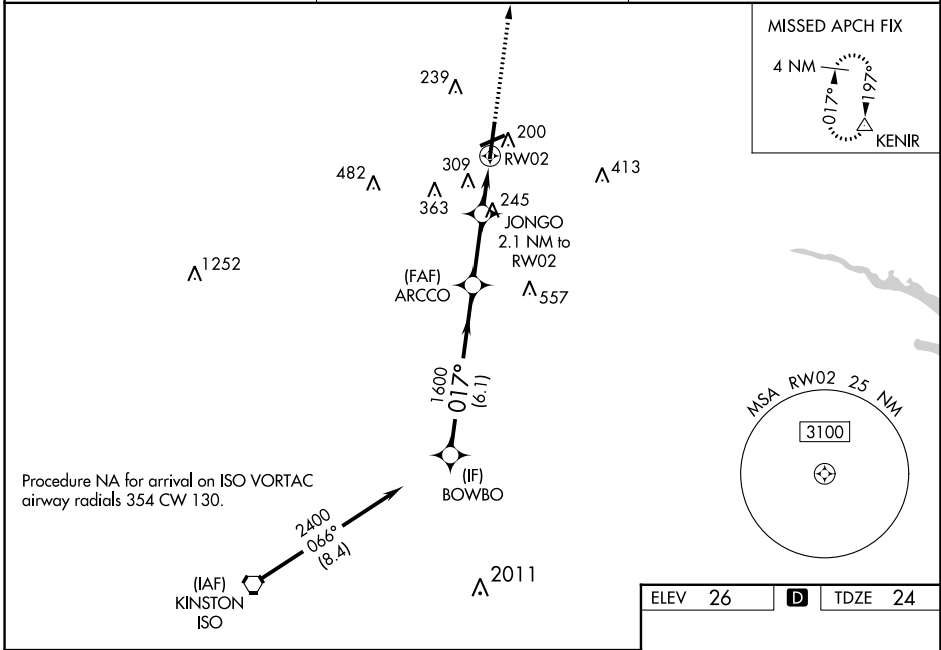
PITT-GREENVILLE (PGV)

RNP APCH-GPS.

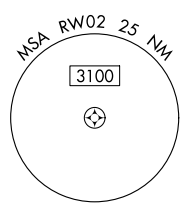
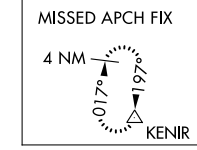
**⚠** Baro-VNAV NA when using Washington altimeter setting. For uncompensated Baro-VNAV systems, LNAV/VNAV NA below -15°C or above 50°C. Rwy 2 helicopter visibility reduction below 3/4 SM NA. When local altimeter setting not received use Washington altimeter setting and increase LPV DA to 444 feet, visibility all Cats 1/8 SM; increase LNAV/VNAV DA to 661; increase all MDAs 60 feet, LNAV visibility Cat C and D and Circling Cat D 1/4 SM. VDP NA when using Washington altimeter setting.

**MISSED APPROACH:**  
Climb to 2100 direct KENIR and hold.

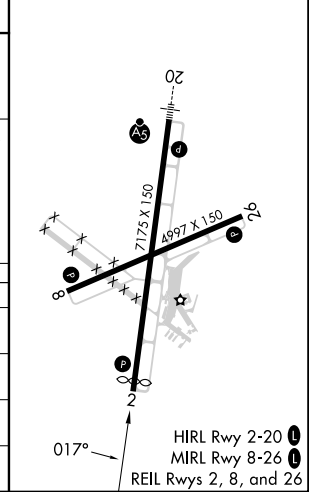
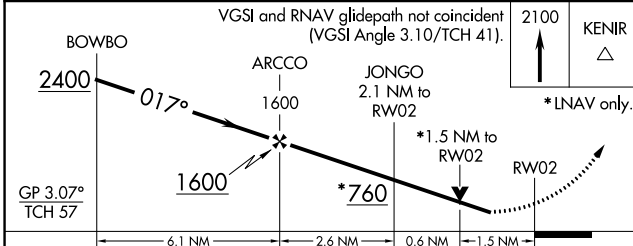
AWOS-3 <b>128.425</b>	WASHINGTON CENTER <b>123.85 279.65</b>	UNICOM <b>122.8 (CTAF)</b>
--------------------------	---	-------------------------------



Procedure NA for arrival on ISO VORTAC  
airway radials 354 CW 130.



ELEV 26	<b>D</b>	TDZE 24
---------	----------	---------



CATEGORY	A	B	C	D
LPV DA	403-1		379 (400-1)	
LNAV/VNAV DA	620-1 3/4		596 (600-1 3/4)	
LNAV MDA	540-1	516 (600-1)	540-1 3/8	516 (600-1 3/8)
<b>C</b> CIRCLING	600-1 574 (600-1)	620-1 594 (600-1)	700-2 674 (700-2)	800-2 1/2 774 (800-2 1/2)

SE-2, 08 AUG 2024 to 05 SEP 2024

SE-2, 08 AUG 2024 to 05 SEP 2024