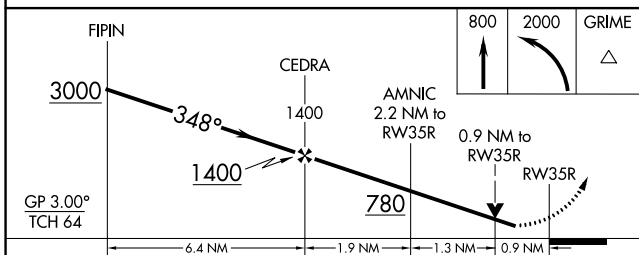
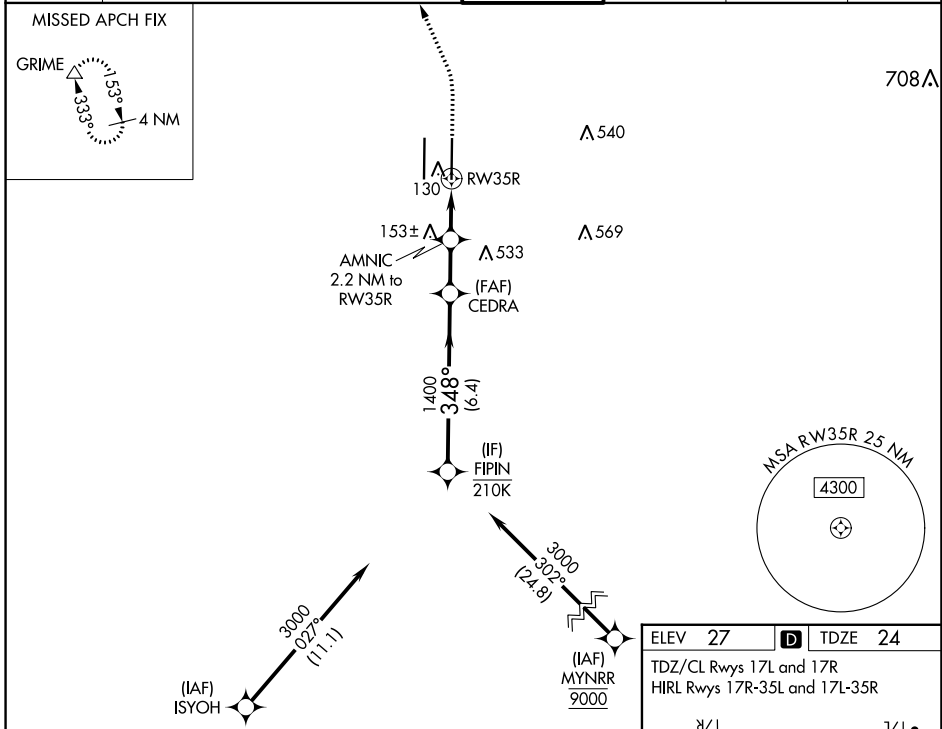


RNAV (GPS) Y RWY 35R

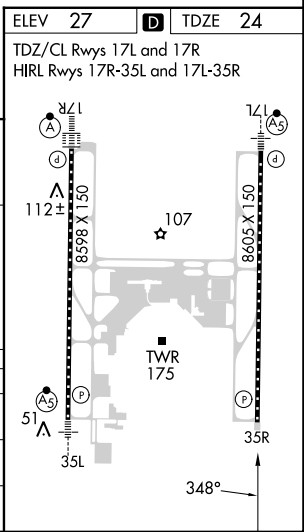
SACRAMENTO INTL (SMF)

APP CRS	Rwy Idg	8605
348°	TDZE	24
	Apt Elev	27

RNP APCH-GPS.		MISSED APPROACH: Climb to 800 then climbing left turn to 2000 direct GRIME and hold.					
<p>▼ Circling NA west of Rwy 17L-35R. Rwy 35R helicopter visibility reduction below 3/4 SM NA. For uncompensated Baro-VNAV systems, LNAV/VNAV NA below -2°C or above 54°C.</p>		<p>NORCAL APP CON</p> <p>125.4 259.1 (W-NE) 125.25 257.9 (SW)</p> <p>127.4 317.5 (E-SE)</p>		<p>CAPITOL TOWER</p> <p>125.7 256.7</p>	<p>GND CON</p> <p>121.7 256.7</p>	<p>CLNC DEL</p> <p>121.1 256.7</p>	<p>CPDLC</p>



CATEGORY	A	B	C	D
LNAV/VNAV DA		311/45	287 (300-7%)	
LNAV MDA		380/55	356 (400-1)	
C CIRCLING	400-1 373 (400-1)	480-1 453 (500-1)	480-1½ 453 (500-1½)	840-2¾ 813 (900-2¾)



SW-2, 31 OCT 2024 to 28 NOV 2024

SW-2, 31 OCT 2024 to 28 NOV 2024