

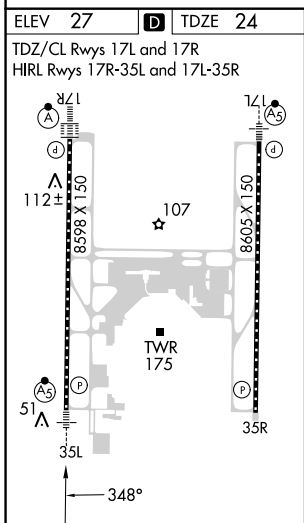
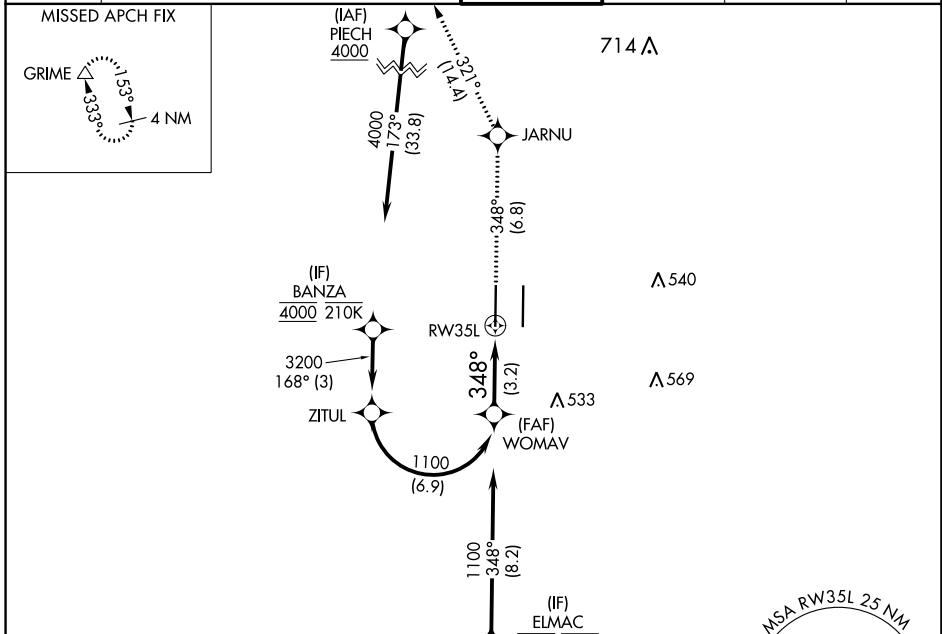
APP CRS	Rwy Idg	<b>8598</b>
<b>348°</b>	TDZE	<b>24</b>
	Apt Elev	<b>27</b>

# RNAV (RNP) Z RWY 35L

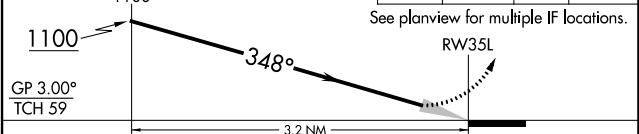
SACRAMENTO INTL (SMF)

RNP AR APCH-GPS.		MALSR	MISSED APPROACH: Climb to 2000 on track 348° to JARNU and track 321° to GRIME and hold.	
▼ For uncompensated Baro-VNAV systems, procedure NA below -2°C or above 54°C. For inop ALS, increase RNP 0.12 all Cats visibility to RVR 4500; increase RNP 0.30 all Cats visibility to RVR 5500.				

D-ATIS	NORCAL APP CON	CAPITOL TOWER	GND CON	CLNC DEL	CPDLC
<b>126.75</b>	<b>125.4 259.1 (W-NE) 125.25 257.9 (SW) 127.4 317.5 (E-SE)</b>	<b>125.7 256.7</b>	<b>121.7 256.7</b>	<b>121.1 256.7</b>	



VGSi and RNAV glidepath not coincident (VGSi Angle 3.00/TCH 76).	2000	JARNU	GRIME
WOMAV	↑ tr 348°	$\diamond$	tr 321° $\triangle$
1100	See planview for multiple IF locations.		



CATEGORY	A	B	C	D
RNP 0.12 DA		318/24	294 (300-1/2)	
RNP 0.30 DA		382/30	358 (400-5/8)	

**AUTHORIZATION REQUIRED**