

LOC/DME I-SMF <b>111.1</b> Chan 48	APP CRS <b>168°</b>	Rwy ldg <b>8598</b> TDZE <b>25</b> Apt Elev <b>27</b>
--	------------------------	---

# ILS or LOC RWY 17R

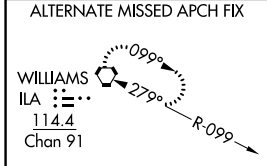
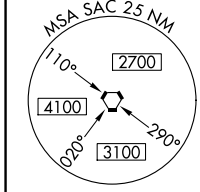
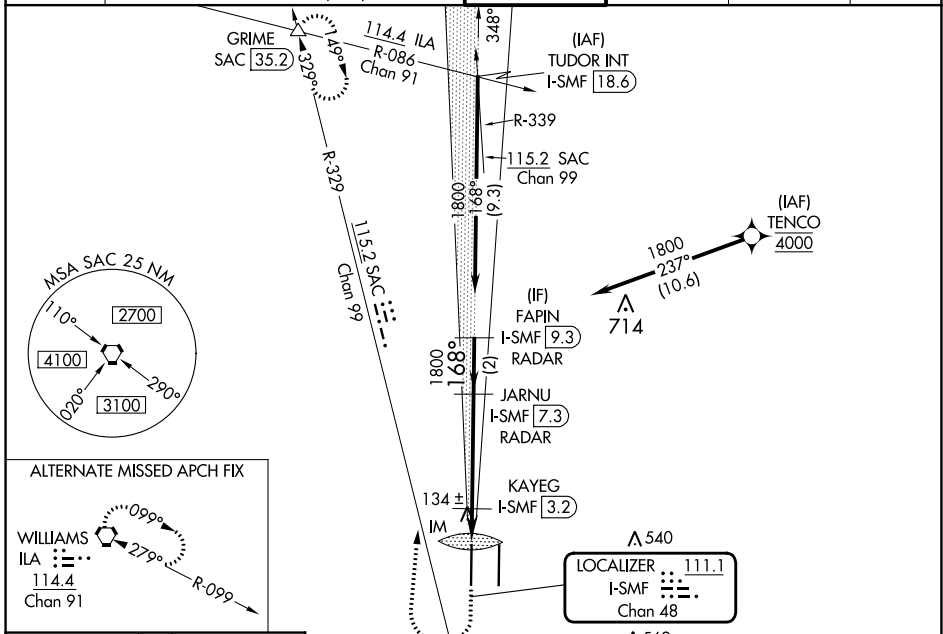
SACRAMENTO INTL (SMF)

Aircraft not GPS equipped - RADAR required for procedure entry.  
DME or RADAR required. RNP APCH-GPS. From TENCO.

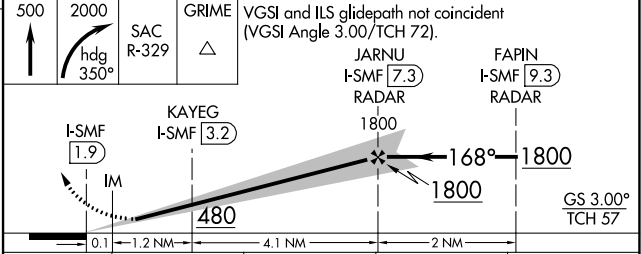
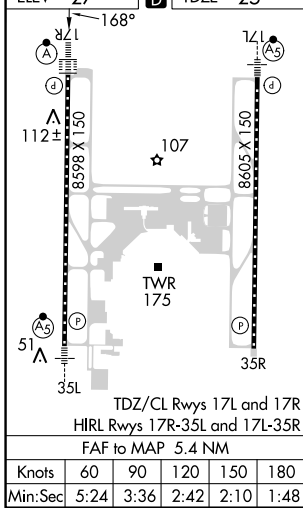
Simultaneous approach authorized.  
Circling NA east of Rwy 17R-35L.

ALSIF-2  
MISSED APPROACH: Climb to 500 then climbing right turn to 2000 on heading 350° and SAC VORTAC R-329 to GRIME INT/SAC 35.2 DME and hold.

D-ATIS <b>126.75</b>	NORCAL APP CON <b>125.4 259.1 (W-NE) 125.25 257.9 (SW) 127.4 317.5 (E-SE)</b>	CAPITOL TOWER <b>125.7 256.7</b>	GND CON <b>121.7 256.7</b>	CLNC DEL <b>121.1 256.7</b>	CPDLC
-------------------------	--	-------------------------------------	-------------------------------	--------------------------------	-------



ELEV 27 TDZE 25



CATEGORY	A	B	C	D
S-ILS 17R	225/18		200 (200-½)	
S-LOC 17R	480/24	455 (500-½)	480/45	455 (500-¾)
<b>C</b> CIRCLING	480-1	453 (500-1)	480-1½	580-2
KAYEG FIX MINIMUMS (DME REQUIRED)				
S-LOC 17R	400/24	375 (400-½)	400/35	375 (400-¾)
<b>C</b> CIRCLING	440-1	480-1	480-1½	580-2
	413 (500-1)	453 (500-1)	453 (500-½)	553 (600-2)

SW-2, 31 OCT 2024 to 28 NOV 2024

SW-2, 31 OCT 2024 to 28 NOV 2024