

WAAS CH <b>99722</b> <b>W31A</b>	APP CRS <b>312°</b>	Rwy Idg <b>5002</b> TDZE <b>943</b> Apt Elev <b>962</b>
--	------------------------	---

# RNAV (GPS) RWY 31

LIVINGSTON COUNTY SPENCER J HARDY (OZW)

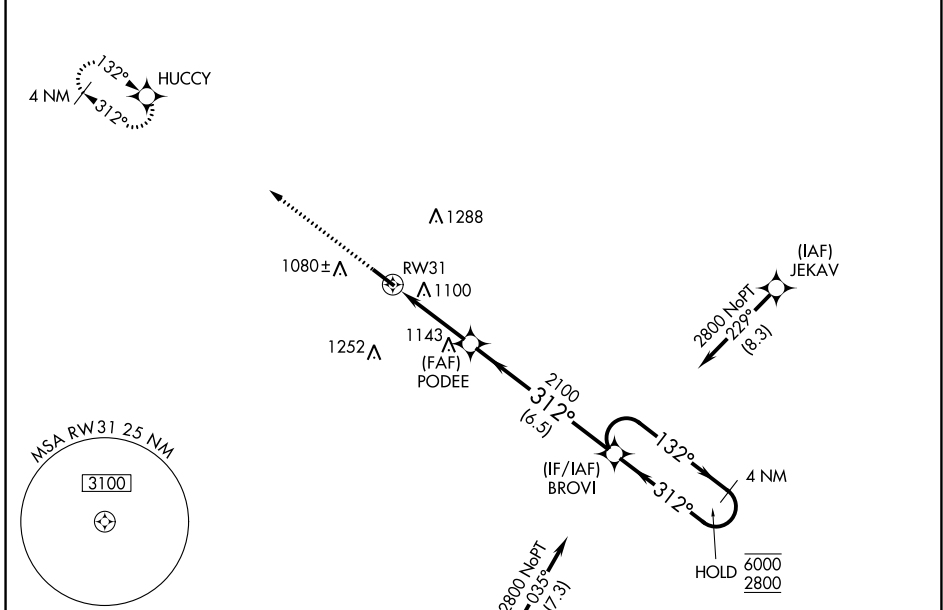
RNP APCH.



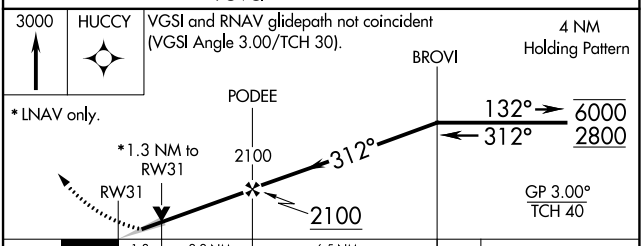
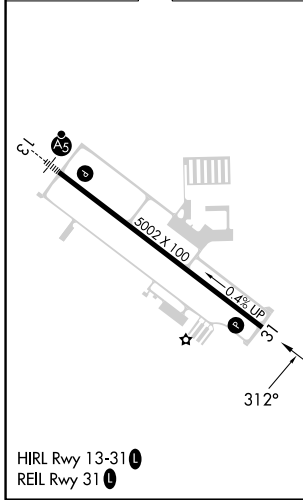
For uncompensated Baro-VNAV systems, LNAV/VNAV NA below -16°C or above 54°C.

MISSED APPROACH:  
Climb to 3000 direct  
HUCCY and hold.

AWOS-3 <b>118.875</b>	DETROIT APP CON <b>132.35 284.0</b>	CLNC DEL <b>121.725 (GCO)</b>	UNICOM <b>123.0 (CTAF) 0</b>
--------------------------	--	----------------------------------	---------------------------------



ELEV 962	TDZE 943
----------	----------



CATEGORY	A	B	C	D
LPV DA		1143- <sup>3</sup> / <sub>4</sub>	200 (200- <sup>3</sup> / <sub>4</sub> )	
LNAV/VNAV DA		1410-1 <sup>5</sup> / <sub>8</sub>	467 (500-1 <sup>5</sup> / <sub>8</sub> )	
LNAV MDA	1400-1	457 (500-1)	1400-1 <sup>3</sup> / <sub>8</sub>	457 (500-1 <sup>3</sup> / <sub>8</sub> )
CIRCLING	1400-1 438 (500-1)	1420-1 458 (500-1)	1600-1 <sup>3</sup> / <sub>4</sub> 638 (700-1 <sup>3</sup> / <sub>4</sub> )	1600-2 638 (700-2)

EC-1, 08 AUG 2024 to 05 SEP 2024

EC-1, 08 AUG 2024 to 05 SEP 2024