

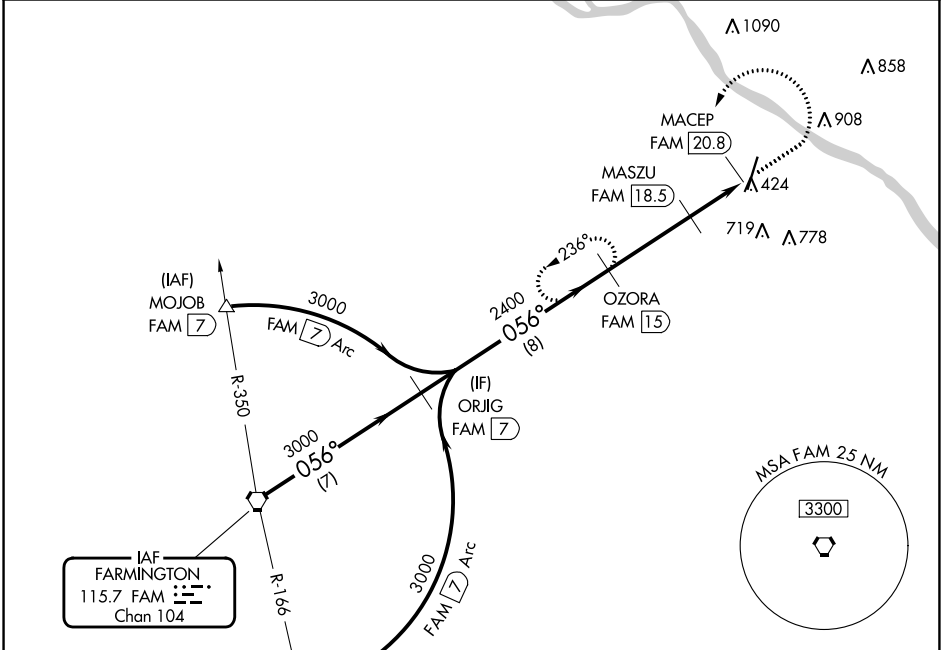
VORTAC FAM <b>115.7</b> Chan <b>104</b>	APP CRS <b>056°</b>	Rwy Idg TDZE Apt Elev <b>372</b>	<b>N/A</b> <b>N/A</b> <b>372</b>
---	------------------------	---	--

# VOR-A

PERRYVILLE RGNL (PCD)

<b>⚠</b> DME required.	MISSED APPROACH: Climb to 1500 then climbing left turn to 2400 on FAM VORTAC R-056 to OZORA/FAM 15 DME and hold.
------------------------	--

AWOS-3PT <b>118.95</b>	KANSAS CITY CENTER <b>127.475 346.275</b>	UNICOM <b>122.8</b> (CTAF) <b>Ⓛ</b>
---------------------------	--	--

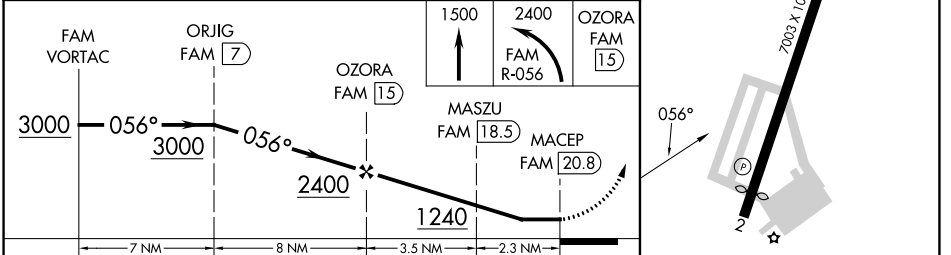


NC-3, 31 OCT 2024 to 28 NOV 2024

NC-3, 31 OCT 2024 to 28 NOV 2024

Procedure NA for arrival at FAM VORTAC on airway radials 012 CW 114.

**⚠** ELEV 372 **D**



CATEGORY	A	B	C	D	MIRL Rwy 2-20 <b>Ⓛ</b> REIL Rws 2 and 20 <b>Ⓛ</b>
CIRCLING	1040-1	668 (700-1)	1260-2 <sup>3</sup> / <sub>4</sub> 888 (900-2 <sup>3</sup> / <sub>4</sub> )	1260-3 888 (900-3)	