

WAAS CH 53418	APP CRS 197°	Rwy Idg TDZE 373	6483
W20A		Apt Elev 373	

RNAV (GPS) RWY 20

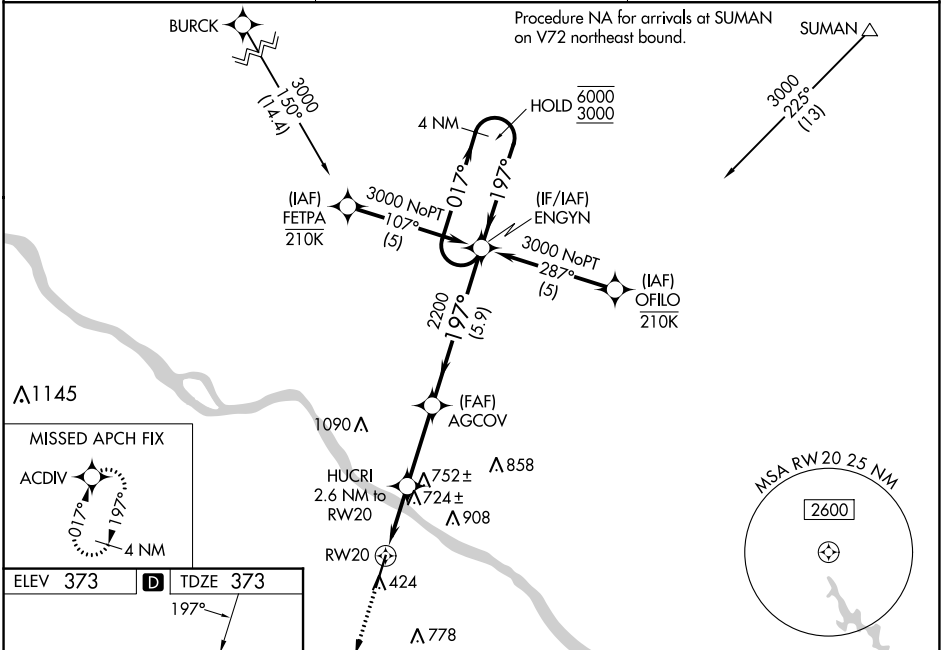
PERRYVILLE RGNL (PCD)

RNP APCH - GPS.

⚠ For uncompensated Baro-VNAV systems, LNAV/VNAV NA below -15°C or above 54°C. Baro-VNAV and VDP NA when using CGI altimeter setting. Rwy 20 helicopter visibility reduction below 3/4 SM NA. When local altimeter setting not received, use CGI altimeter setting and increase LPV DA to 723 feet; increase LNAV/VNAV DA to 746 feet; increase all MDAs 100 feet and LNAV visibility Cat C/D 1/4 SM, and Circling visibility Cat C 1/4 SM.

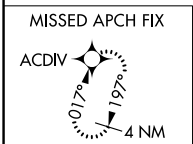
MISSED APPROACH: Climb to 3000 direct ACDIV and hold.

AWOS-3PT 118.95	KANSAS CITY CENTER 127.475 346.275	UNICOM 122.8 (CTAF) 0
---------------------------	--	---------------------------------

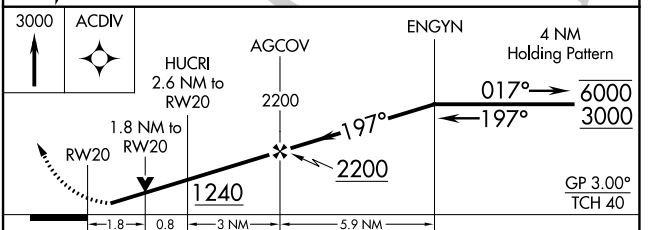
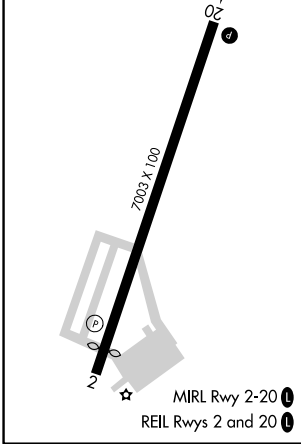


NC-3, 31 OCT 2024 to 28 NOV 2024

NC-3, 31 OCT 2024 to 28 NOV 2024



ELEV 373	D	TDZE 373
----------	----------	----------



CATEGORY	A	B	C	D
LPV DA		623-1	250 (300-1)	
LNAV/VNAV DA		646-1	273 (300-1)	
LNAV MDA	980-1	607 (700-1)	980-1 3/4	607 (700-1 3/4)
CIRCLING	980-1 607 (700-1)	1000-1 627 (700-1)	1260-2 3/4 887 (900-2 3/4)	1260-3 887 (900-3)