

LOC I-JZM <b>108.9</b>	APP CRS <b>329°</b>	Rwy Idg <b>5700</b> TDZE <b>831</b> Apt Elev <b>833</b>
---------------------------	------------------------	---

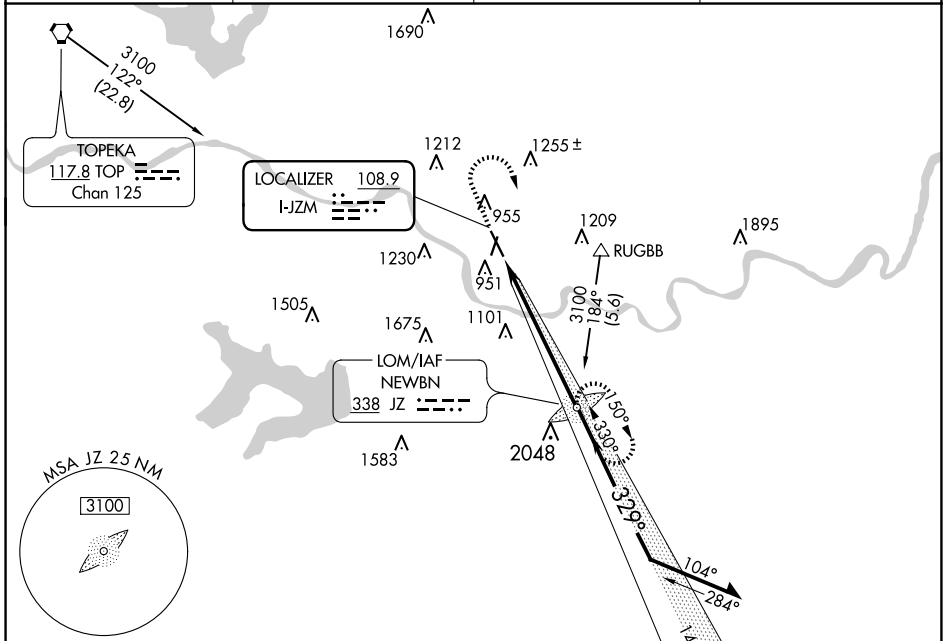
# ILS or LOC RWY 33

LAWRENCE RGNL (LWC)

⚠ When local altimeter setting not received, use Philip Billard Muni altimeter setting and increase DA to 1083 feet; increase all MDAs 60 feet and visibility Cat C ¼ SM.

⚠ MISSED APPROACH: Climb to 2000 then climbing right turn to 3100 direct NEWBN LOM and hold.

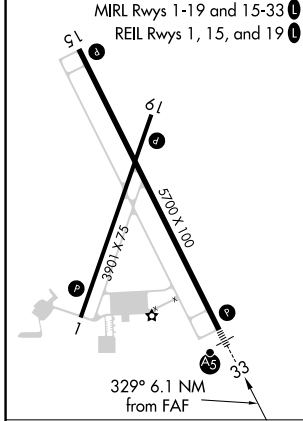
ASOS <b>121.225</b>	KANSAS CITY CENTER <b>123.8 343.7</b>	CLNC DEL <b>121.825</b>	UNICOM <b>123.0 (CTAF) 0</b>
------------------------	--	----------------------------	---------------------------------



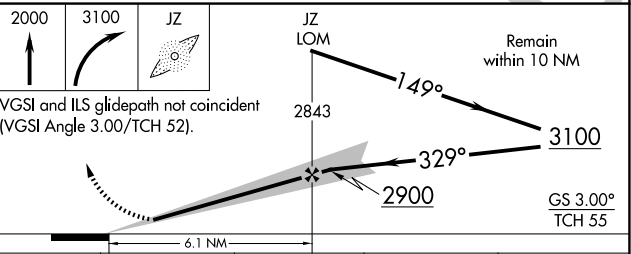
NC-2, 23 JAN 2025 to 20 FEB 2025

NC-2, 23 JAN 2025 to 20 FEB 2025

ELEV <b>833</b>	TDZE <b>831</b>
-----------------	-----------------



## ADF REQUIRED



FAF to MAP 6.1 NM					
Knots	60	90	120	150	180
Min:Sec	6:06	4:04	3:03	2:26	2:02

CATEGORY	A	B	C	D
S-ILS 33	1031-½ 200 (200-½)			NA
S-LOC 33	1260-½ 429 (500-½)		1260-¾ 429 (500-¾)	NA
CIRCLING	1420-1 587 (600-1)	1480-1 647 (700-1)	1620-2¼ 787 (800-2¼)	NA