

WAAS CH <b>69422</b> <b>W36A</b>	APP CRS <b>359°</b>	Rwy Idg <b>3715</b> TDZE <b>11</b> Apt Elev <b>11</b>
--	------------------------	---

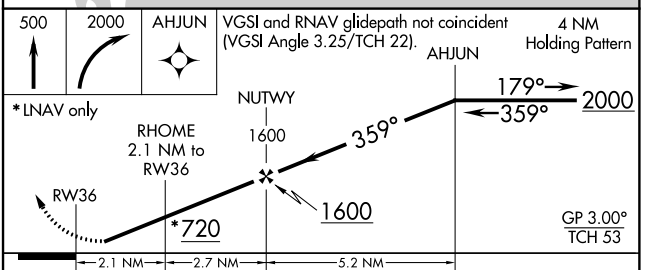
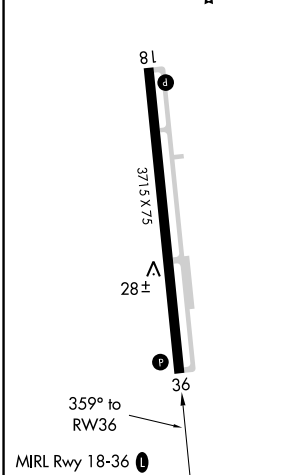
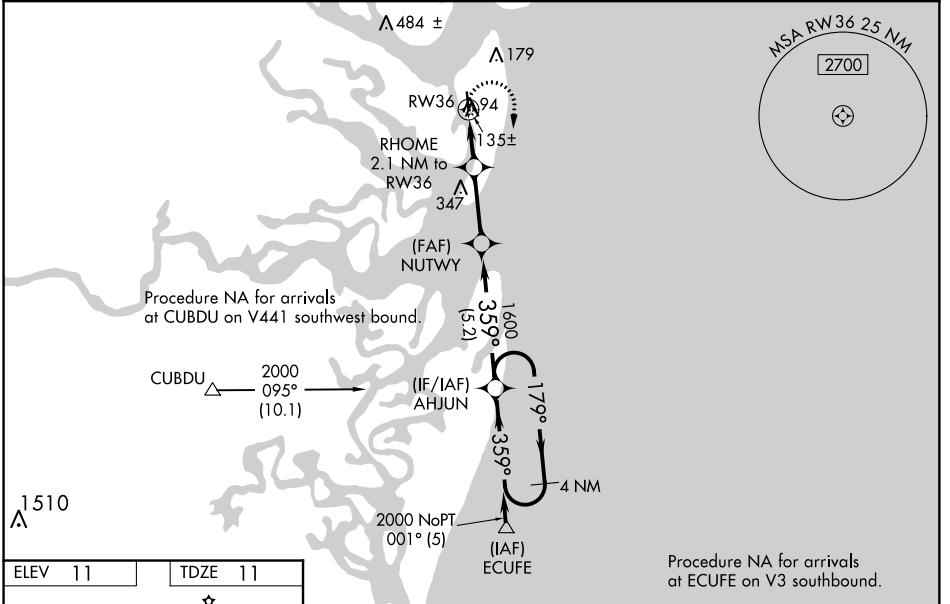
# RNAV (GPS) RWY 36

JEKYLL ISLAND (09J)

**NA** Baro-VNAV NA when using Jacksonville Intl altimeter setting. For uncompensated Baro-VNAV systems, LNAV/VNAV NA below -15°C (5°F) or above 54°C (130°F). When VGSi inop, straight-in/Circling Rwy 36 procedure NA at night. DME/DME RNP-0.3 NA. Visibility reduction by helicopters NA. Use Brunswick altimeter setting, when not received, use Jacksonville Intl altimeter setting and increase LPV DA to 389 LNAV/VNAV DA to 386 and all MDA 100 feet and LPV and LNAV/VNAV visibility all Cats 1/2 mile.

**MISSED APPROACH:**  
Climb to 500 then climbing right turn to 2000 direct AHJUN and hold.

MCKINNON ST SIMONS ISLAND ASOS <b>120.025</b>	JACKSONVILLE CENTER <b>126.75 277.4</b>	UNICOM <b>123.05 (CTAF) 0</b>
--	--	----------------------------------



CATEGORY	A	B	C	D
LPV DA	300-1	289 (300-1)		NA
LNAV/VNAV DA	297-1	286 (300-1)		NA
LNAV MDA	400-1	389 (400-1)		NA
CIRCLING	520-1	509 (600-1)		NA

SE-4, 12 SEP 2019 to 10 OCT 2019

SE-4, 12 SEP 2019 to 10 OCT 2019