

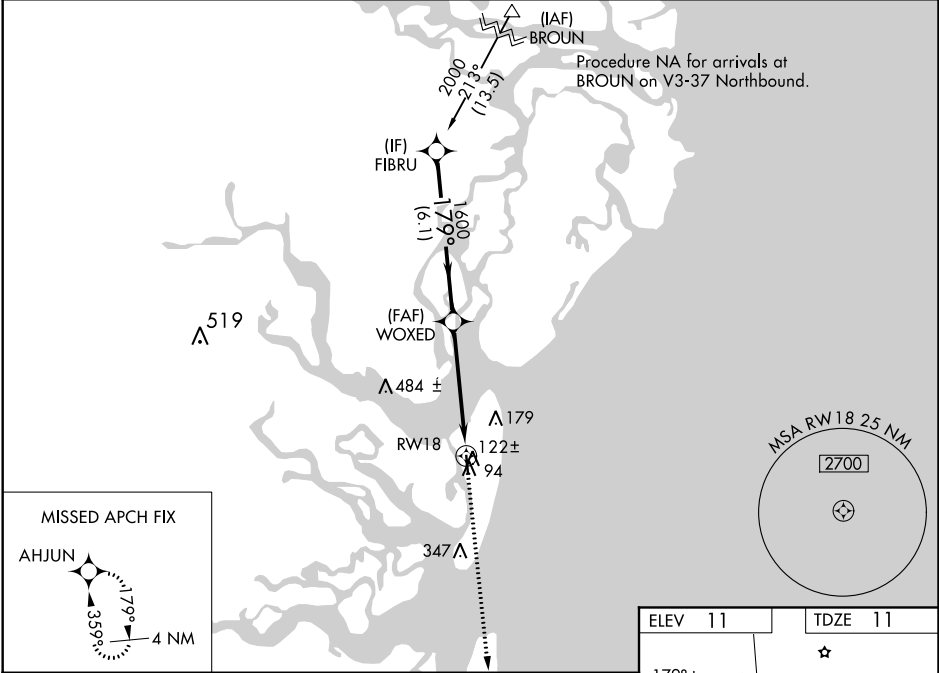
| | | |
|--|------------------------|---|
| WAAS CH 61222 W18A | APP CRS 179° | Rwy Idg 3715 TDZE 11 Apt Elev 11 |
|--|------------------------|---|

RNAV (GPS) RWY 18

JEKYLL ISLAND (09J)

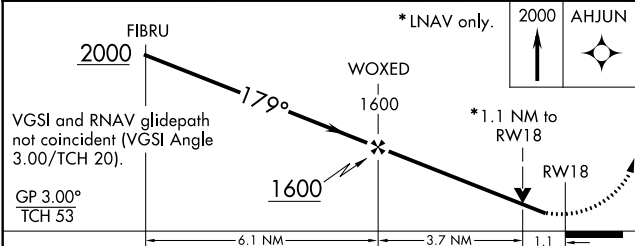
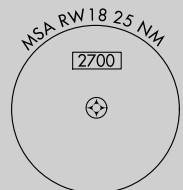
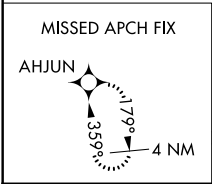
| | | |
|----------|---|---|
| RNP APCH | <p>NA Circling Rwy 36 NA at night. Baro-VNAV NA. Use McKinnon St Simons Island altimeter setting, when not received use Jacksonville Intl altimeter setting; increase LPV DA to 324 feet and LNAV/VNAV DA to 377 feet and all visibilities 1/2 SM; increase all MDAs 100 feet.</p> | MISSED APPROACH: Climb to 2000 direct AHJUN and hold. |
|----------|---|---|

| | | |
|--|--|----------------------------------|
| MCKINNON ST SIMONS ISLAND ASOS 120.025 | JACKSONVILLE CENTER 126.75 277.4 | UNICOM 123.05 (CTAF) 0 |
|--|--|----------------------------------|



SE-4, 12 SEP 2019 to 10 OCT 2019

SE-4, 12 SEP 2019 to 10 OCT 2019



| | |
|-------------------------|---------|
| ELEV 11 | TDZE 11 |
| | |
| <p>MIRL Rwy 18-36 0</p> | |

| CATEGORY | A | B | C | D |
|--------------|---------|---------------|---|----|
| LPV DA | 224-3/4 | 213 (300-3/4) | | NA |
| LNAV/VNAV DA | 277-7/8 | 266 (300-7/8) | | NA |
| LNAV MDA | 400-1 | 389 (400-1) | | NA |
| CIRCLING | 540-1 | 529 (600-1) | | NA |