

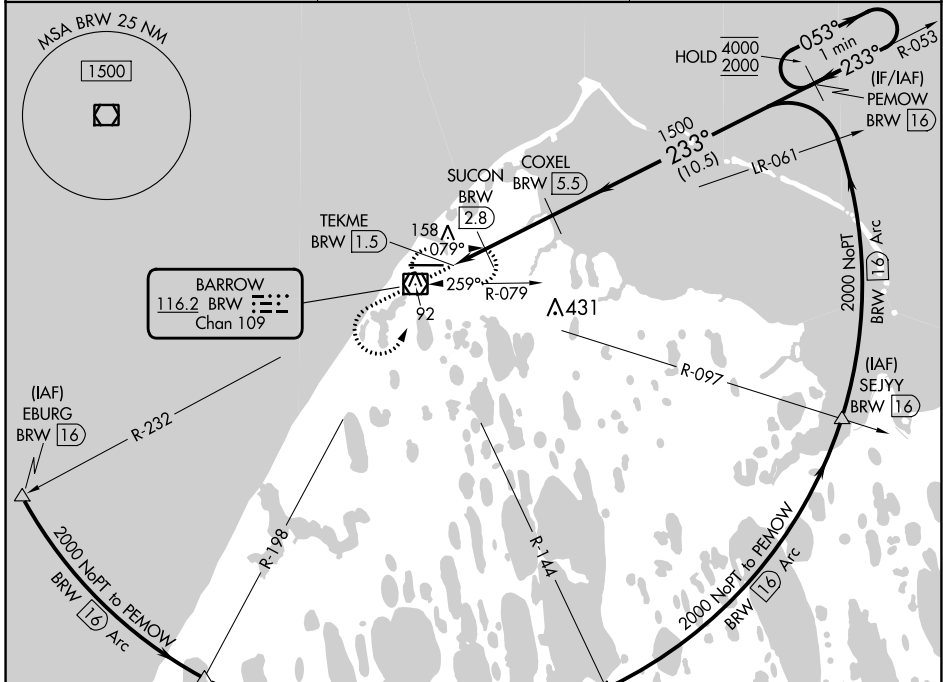
VOR/DME BRW <b>116.2</b> Chan <b>109</b>	APP CRS <b>233°</b>	Rwy Idg TDZE Apt Elev <b>5900</b> <b>46</b> <b>49</b>
--	------------------------	--

# VOR RWY 26

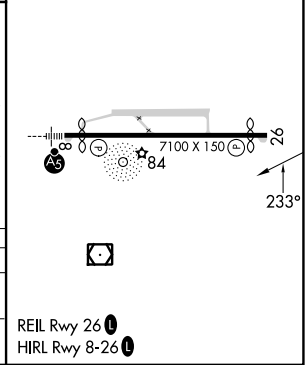
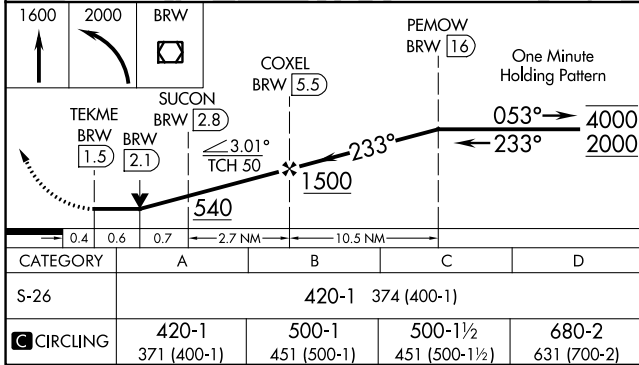
WILEY POST-WILL ROGERS MEML (BRW)(PABR)

DME required.	MISSED APPROACH: Climb to 1600 then climbing left turn to 2000 direct BRW VOR/DME and hold, continue climb-in-hold to 2000.
<p>⚠ Circling NA for Cat A north of Rwy 8-26.</p>	

AFIS <b>132.15</b>	ANCHORAGE CENTER <b>135.3 239.25</b>	BARROW RADIO <b>123.6 (CTAF) 0</b>
-----------------------	---	---------------------------------------



ELEV 49	TDZE 46
---------	---------



# VOR RWY 26

AK, 31 OCT 2024 to 26 DEC 2024

AK, 31 OCT 2024 to 26 DEC 2024