

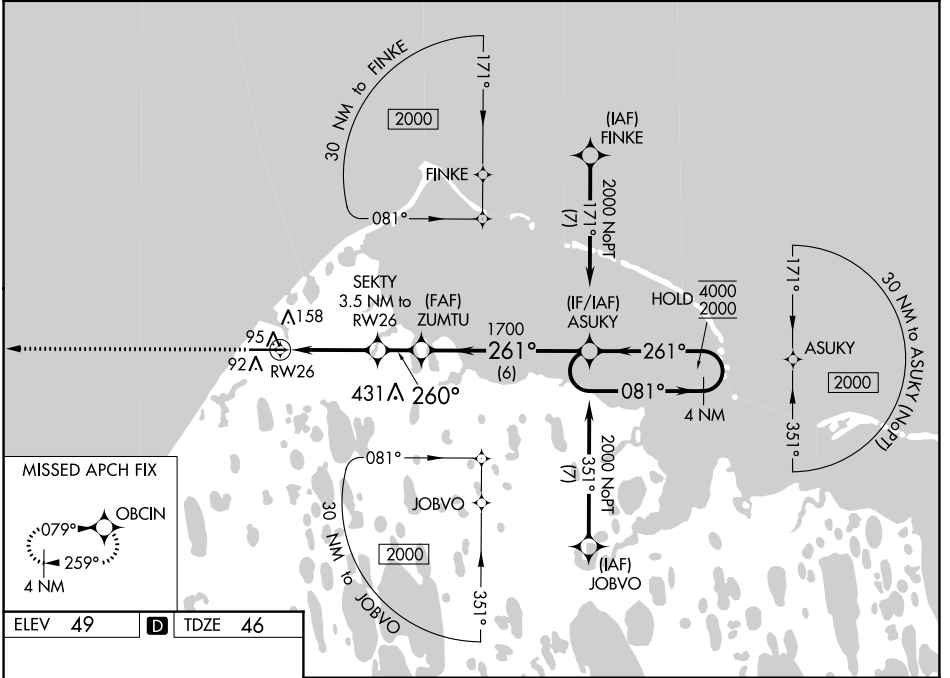
WAAS CH <b>73041</b> <b>W26A</b>	APP CRS <b>260°</b>	Rwy Idg TDZE <b>46</b> Apt Elev <b>49</b>	<b>5900</b>
--	------------------------	---	-------------

# RNAV (GPS) RWY 26

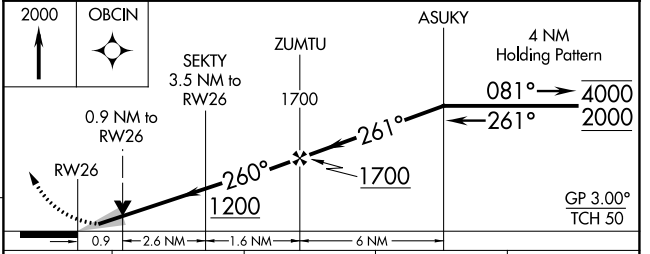
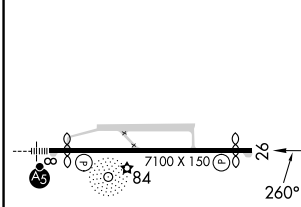
WILEY POST-WILL ROGERS MEML (BRW)(PABR)

RNP APCH - GPS.	MISSED APPROACH: Climb to 2000 direct OBCIN and hold.
<p><b>▼</b> For uncompensated Baro-VNAV systems, LNAV/VNAV  <b>▲</b> NA below -19°C or above 54°C. Circling NA for Cat A north of Rwy 8-26</p>	

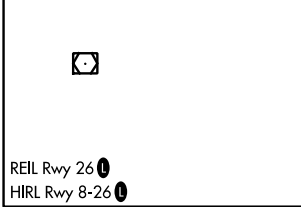
AFIS <b>132.15</b>	ANCHORAGE CENTER <b>135.3 239.25</b>	BARROW RADIO <b>123.6 (CTAF) <b>0</b></b>
-----------------------	---	--



ELEV <b>49</b>	<b>D</b> TDZE <b>46</b>
----------------	-------------------------



CATEGORY	A	B	C	D
LPV DA		246-1	200 (200-1)	
LNAV/VNAV DA		296-1	250 (300-1)	
LNAV MDA		360-1	314 (400-1)	
<b>C</b> CIRCLING	420-1 371 (400-1)	500-1 451 (500-1)	500-1½ 451 (500-1½)	680-2 631 (700-2)



AK, 31 OCT 2024 to 26 DEC 2024

AK, 31 OCT 2024 to 26 DEC 2024