


WAAS CH 72926 W09A	APP CRS 087°	Rwy Idg 10000 TDZE 91 Apt Elev 96
--	------------------------	--

RNAV (GPS) Z RWY 9

GEORGE BUSH INTCNL/HOUSTON (IAH)

▼ For uncompensated Baro-VNAV systems, LNAV/VNAV NA below -3°C (27°F) or above 54°C (130°F). For inop MALSR, increase LPV Cat E visibility to RVR 4000, LNAV/VNAV Cat E visibility to 1½ mile, and LNAV Cat C/D/E visibility to 1¾ mile. Simultaneous approach authorized with Rwy 8L/R. DME/DME RNP-0.3 NA. LNAV procedure NA during simultaneous operations. Use of FD or AP providing RNAV track guidance required during simultaneous operations.
 ** RVR 1800 authorized with use of FD or AP or HUD to DA.

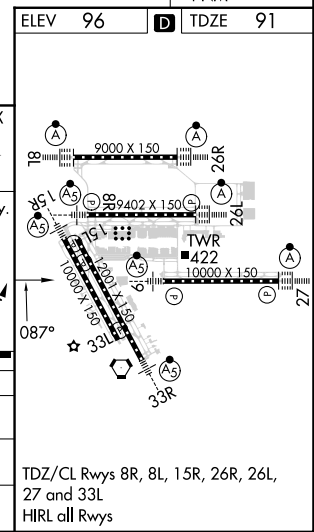
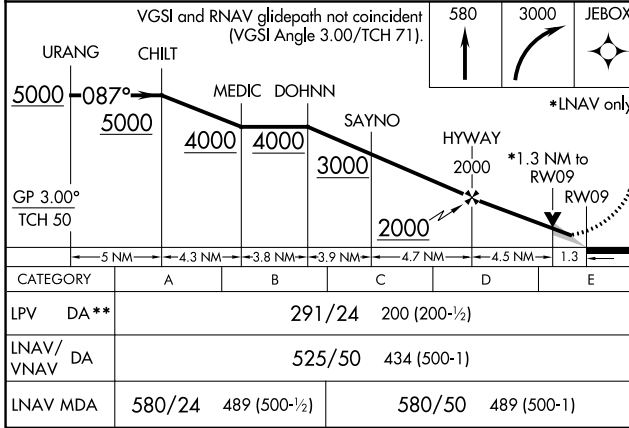
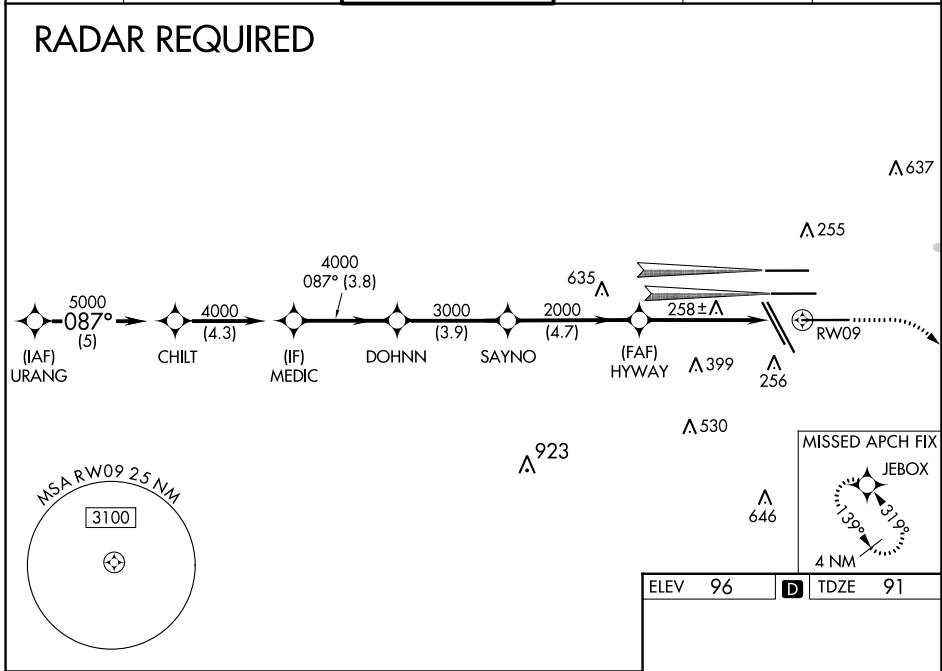
MALSR



MISSED APPROACH: Climb to 580 then climbing right turn to 3000 direct JEBOX and hold.

D-ATIS 124.05	HOUSTON APP CON 120.05 379.1 EAST 124.35 316.15 WEST	HOUSTON TOWER 135.15 290.2	GND CON 118.575	CLNC DEL 128.1	CPDLC
-------------------------	--	--------------------------------------	---------------------------	--------------------------	-------

RADAR REQUIRED



SC-5, 31 OCT 2024 to 28 NOV 2024

SC-5, 31 OCT 2024 to 28 NOV 2024