

WAAS CH <b>53626</b> <b>W08B</b>	APP CRS <b>087°</b>	Rwy Idg TDZE <b>96</b> Apt Elev <b>96</b>	<b>9402</b>
--	------------------------	---	-------------

# RNAV (GPS) Z RWY 8R

GEORGE BUSH INTCNL/HOUSTON (IAH)

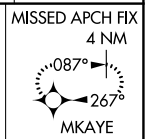
▼ For uncompensated Baro-VNAV systems, LNAV/VNAV NA below -3°C (27°F) or above 54°C (130°F). For inop MALS R, increase LPV Cat E visibility to RVR 4000, LNAV/VNAV all Cats visibility to RVR 6000, and LNAV Cat C/D/E visibility to 1 $\frac{1}{2}$ %. Simultaneous approach authorized with Rwy 8L and Rwy 9. DME/DME RNP-0.3 NA. Use of FD or AP providing RNAV track guidance required during simultaneous operations. LNAV procedure NA during simultaneous operations.



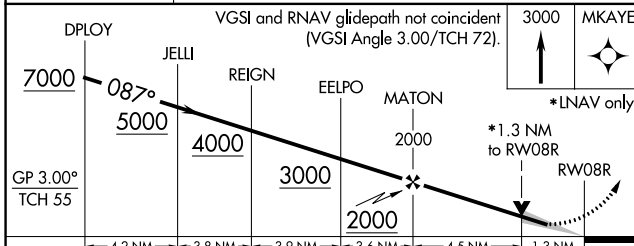
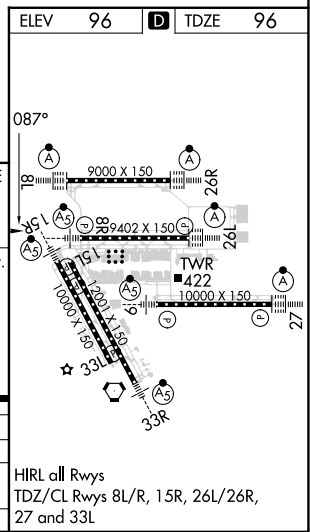
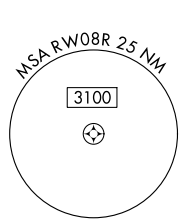
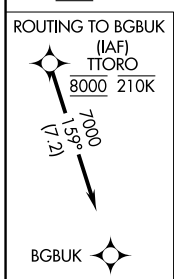
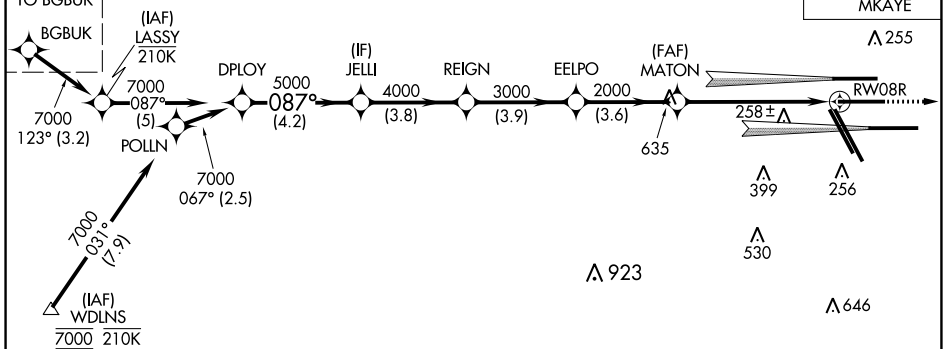
MISSED APPROACH:  
Climb to 3000 direct MKAYE and hold.

D-ATIS <b>124.05</b>	HOUSTON APP CON <b>120.05 379.1 EAST</b> <b>124.35 316.15 WEST</b>	HOUSTON TOWER <b>125.35 290.2</b>	GND CON <b>118.575</b>	CLNC DEL <b>128.1</b>	CPDLC
-------------------------	--	--------------------------------------	---------------------------	--------------------------	-------

## RADAR REQUIRED



SEE INSET FOR ROUTING TO BGBK



GP 3.00° TCH 55	4.2 NM	3.8 NM	3.9 NM	3.6 NM	4.5 NM	1.3 NM
CATEGORY	A	B	C	D	E	
LPV DA	296/18		200 (200- $\frac{1}{2}$ )			
LNAV/VNAV DA	421/32		325 (400- $\frac{5}{8}$ )			
LNAV MDA	580/24	484 (500- $\frac{1}{2}$ )	580/50	484 (500-1)		

HIRL all Rwys  
TDZ/CL Rwys 8L/R, 15R, 26L/26R, 27 and 33L

SC-5, 31 OCT 2024 to 28 NOV 2024

SC-5, 31 OCT 2024 to 28 NOV 2024