

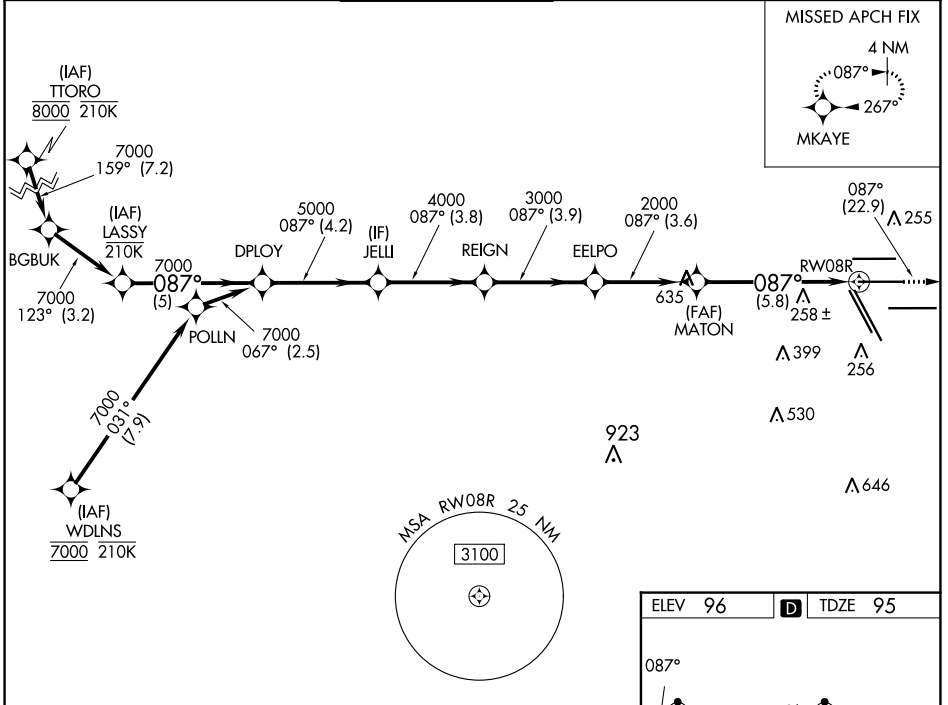
APP CRS	Rwy Idg	9402
087°	TDZE	95
	Apt Elev	96

RNAV (RNP) Y RWY 8R

GEORGE BUSH INTCNL/HOUSTON (IAH)

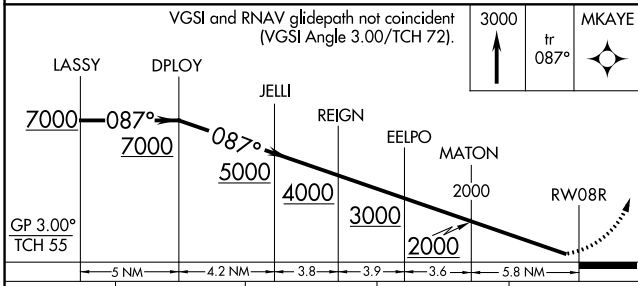
RNP AR APCH.		MALSR	MISSED APPROACH: Climb to 3000 on track 087° to MKAYE and hold.	
<p>For uncompensated Baro-VNAV systems, procedure NA below -3°C or above 54°C. For inop ALS increase RNP 0.13 all Cats visibility to RVR 4500, RNP 0.14 all Cats visibility to RVR 5600, RNP 0.30 all Cats visibility to 1¼ SM. Simultaneous approach authorized.</p>				

D-ATIS	HOUSTON APP CON	HOUSTON TOWER	GND CON	CLNC DEL	CPDLC
124.05	120.05 379.1 EAST 124.35 316.15 WEST	125.35 290.2	118.575	128.1	



SC-5, 08 AUG 2024 to 05 SEP 2024

SC-5, 08 AUG 2024 to 05 SEP 2024



ELEV 96	D TDZE 95
---------	------------------

Diagram showing the RWY 8R runway layout. Key features include: RWY 8R (9000 X 150), RWY 26R (2402 X 150), RWY 26L (2402 X 150), RWY 27 (10000 X 150), and RWY 33L (10000 X 150). Other features include TWY 422, TWY 423, TWY 424, TWY 425, TWY 426, TWY 427, TWY 428, TWY 429, TWY 430, TWY 431, TWY 432, TWY 433, TWY 434, TWY 435, TWY 436, TWY 437, TWY 438, TWY 439, TWY 440, TWY 441, TWY 442, TWY 443, TWY 444, TWY 445, TWY 446, TWY 447, TWY 448, TWY 449, TWY 450, TWY 451, TWY 452, TWY 453, TWY 454, TWY 455, TWY 456, TWY 457, TWY 458, TWY 459, TWY 460, TWY 461, TWY 462, TWY 463, TWY 464, TWY 465, TWY 466, TWY 467, TWY 468, TWY 469, TWY 470, TWY 471, TWY 472, TWY 473, TWY 474, TWY 475, TWY 476, TWY 477, TWY 478, TWY 479, TWY 480, TWY 481, TWY 482, TWY 483, TWY 484, TWY 485, TWY 486, TWY 487, TWY 488, TWY 489, TWY 490, TWY 491, TWY 492, TWY 493, TWY 494, TWY 495, TWY 496, TWY 497, TWY 498, TWY 499, TWY 500.

CATEGORY	A	B	C	D
RNP 0.13 DA		383/40	288 (300-¾)	
RNP 0.14 DA		441/40	346 (400-¾)	
RNP 0.30 DA		492/45	397 (400-¾)	

AUTHORIZATION REQUIRED

TDZ/CL Rwy 8R, 8L, 15R, 26R, 26L, 27 and 33L
HIRL all Rwy's