

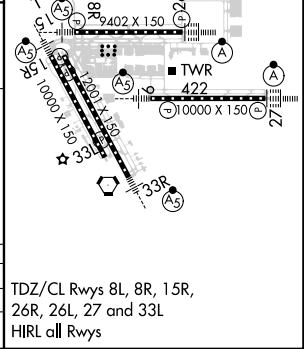
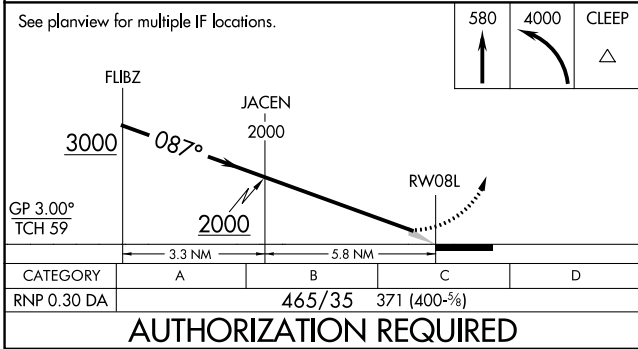
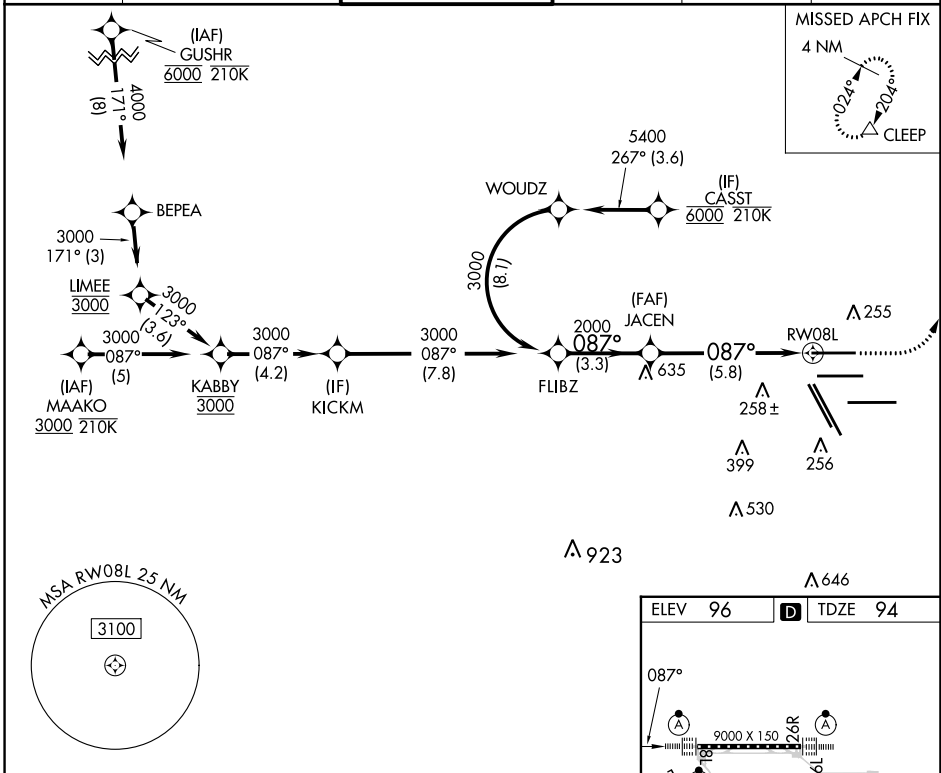
APP CRS	Rwy Idg	<b>9000</b>
<b>087°</b>	TDZE	<b>94</b>
	Apt Elev	<b>96</b>

# RNAV (RNP) Y RWY 8L

GEORGE BUSH INTCNL/HOUSTON (IAH)

RNP AR APCH-GPS.		ALSF-2	MISSED APPROACH: Climb to 580 then climbing left turn to 4000 direct CLEEP and hold.
<p>Simultaneous approach authorized. For uncompensated Baro-VNAV systems, procedure NA below -2°C or above 54°C. Use of FD or AP providing RNAV track guidance required during simultaneous operations. For inop ALS, increase RNP 0.30 all Cats visibility to RVR 5500.</p>			

D-ATIS	HOUSTON APP CON	HOUSTON TOWER	GND CON	CLNC DEL	CPDLC
<b>124.05</b>	<b>120.05 379.1 EAST</b> <b>124.35 316.15 WEST</b>	<b>120.72 290.2</b>	<b>121.7</b>	<b>128.1</b>	



SC-5, 08 AUG 2024 to 05 SEP 2024

SC-5, 08 AUG 2024 to 05 SEP 2024