

(PITZZ5.PITZZ) 24193

PITZZ FIVE DEPARTURE (RNAV)

GEORGE BUSH INTCNL/HOUSTON (IAH)

AL-5461 (FAA)

HOUSTON, TEXAS

TOP ALTITUDE:
16000

RNAV 1 - DME/DME/IRU or GPS required.

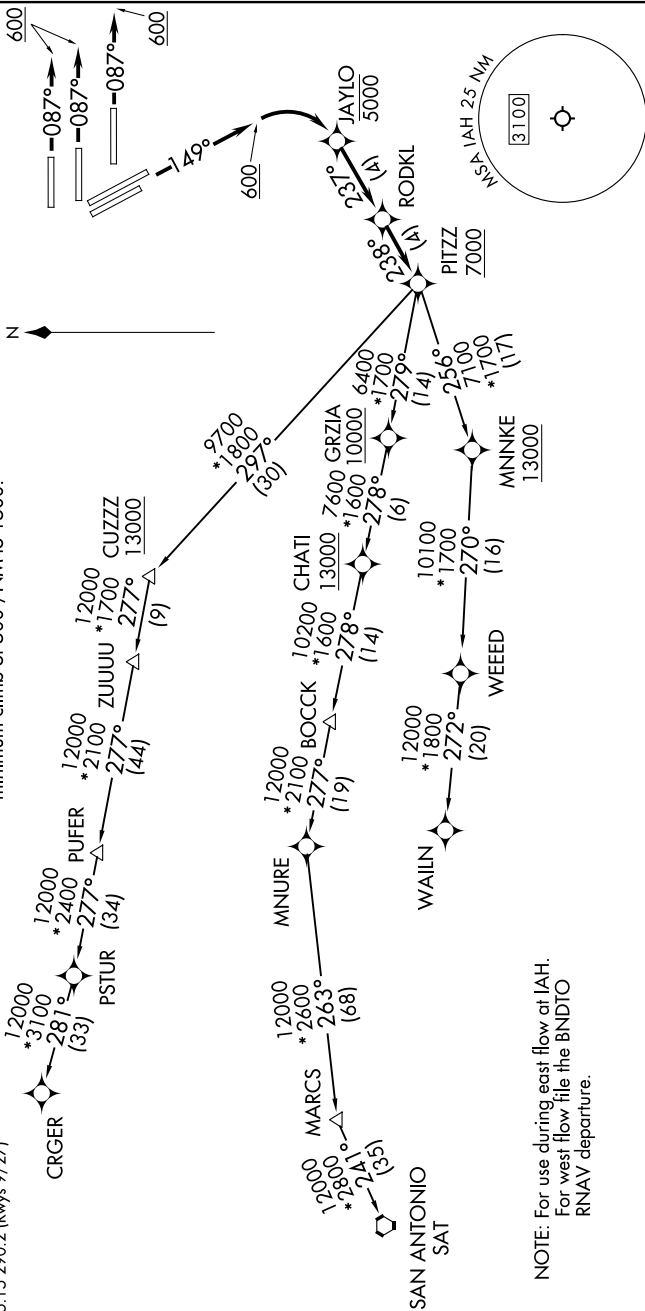
RADAR required.

RADAR required for non - GPS equipped aircraft.

HOUSTON DEP CON 126.675 339.8
D-ATIS 124.05
CLNC DEL 128.1
CPDLC
GND CON
118.575 (Rwys 8L/R, 26L/R, 9/27)
121.7 (Rwys 15L/R, 33L/R)
HOUSTON TOWER
120.725 290.2 (Rwys 8L/26R)
125.35 290.2 (Rwys 8R/26L)
127.3 288.25 (Rwys 15L/R, 33L/R)
135.15 290.2 (Rwys 9/27)

TAKEOFF MINIMUMS

Rwys 8L/R, 9, 15L/R: Standard with minimum climb of 500'/NM to 1500.



NOTE: For use during east flow at IAH.
For west flow file the BNDTO RNAV departure.

(CONTINUED ON FOLLOWING PAGE)

NOTE: Chart not to scale.

PITZZ FIVE DEPARTURE (RNAV)

(PITZZ5.PITZZ) 11JUL24

HOUSTON, TEXAS

GEORGE BUSH INTCNL/HOUSTON (IAH)