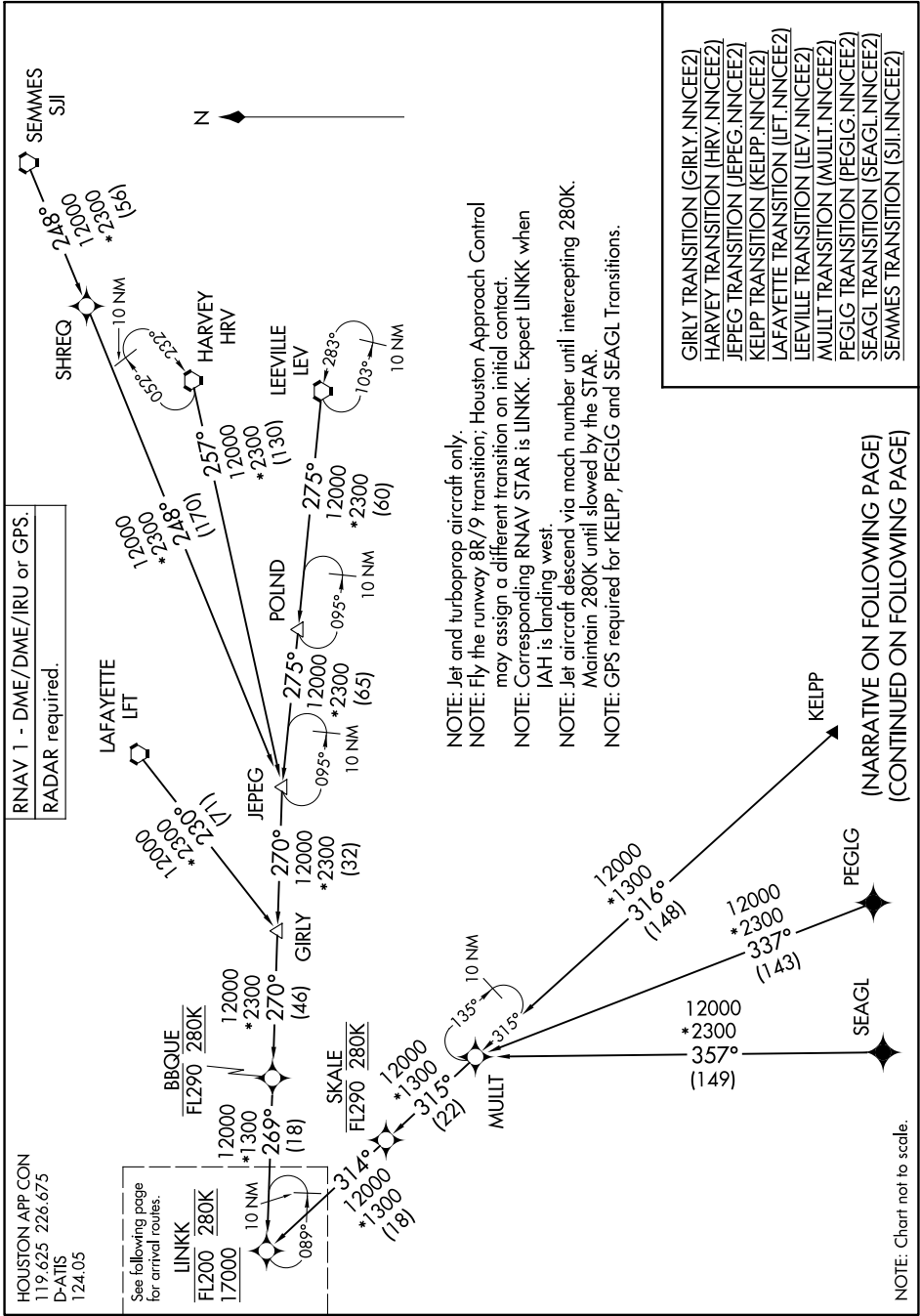


NNCEE TWO ARRIVAL (RNAV) Transition Routes

SC-5, 31 OCT 2024 to 28 NOV 2024



- GIRLY TRANSITION (GIRLY.NNCEE2)
- HARVEY TRANSITION (HRV.NNCEE2)
- JEPEG TRANSITION (JEPEG.NNCEE2)
- KELPP TRANSITION (KELPP.NNCEE2)
- LAFAYETTE TRANSITION (LFT.NNCEE2)
- LEEVILLE TRANSITION (LEV.NNCEE2)
- MULLT TRANSITION (MULLT.NNCEE2)
- PEGLG TRANSITION (PEGLG.NNCEE2)
- SEAGL TRANSITION (SEAGL.NNCEE2)
- SEMMES TRANSITION (SJI.NNCEE2)

NOTE: Jet and turboprop aircraft only.
 NOTE: Fly the runway 8R/9 transition; Houston Approach Control may assign a different transition on initial contact.
 NOTE: Corresponding RNAV STAR is LINKK. Expect LINKK when IAH is landing west.
 NOTE: Jet aircraft descend via mach number until intercepting 280K. Maintain 280K until slowed by the STAR.
 NOTE: GPS required for KELPP, PEGLG and SEAGL Transitions.

(NARRATIVE ON FOLLOWING PAGE)
 (CONTINUED ON FOLLOWING PAGE)

NOTE: Chart not to scale.

NNCEE TWO ARRIVAL (RNAV) Transition Routes

SC-5, 31 OCT 2024 to 28 NOV 2024