

(INDIE8.INDIE) 21280

AL-5461 (FAA)

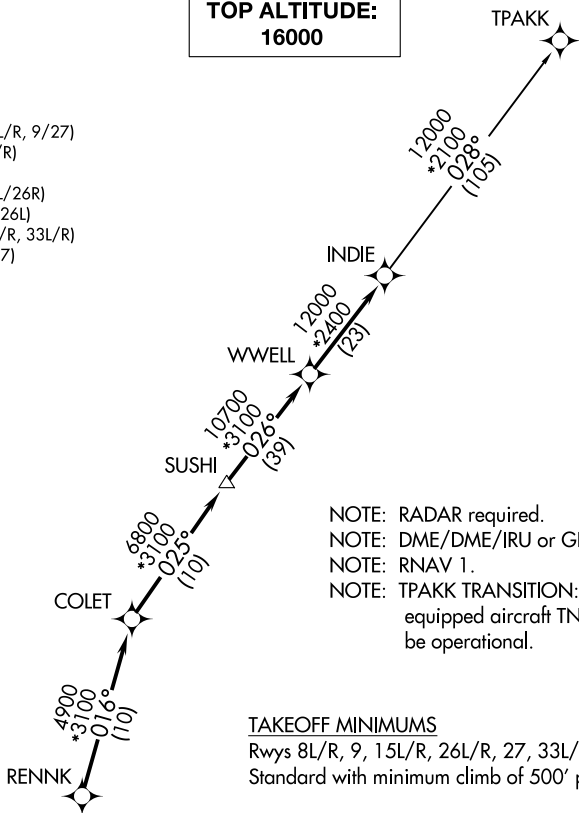
GEORGE BUSH INTCNTL/HOUSTON (IAH)

# INDIE EIGHT DEPARTURE (RNAV)

HOUSTON, TEXAS

D-ATIS  
 124.05  
 CLNC DEL  
 128.1  
 CPDLC  
 GND CON  
 118.575 (Rwys 8L/R, 26L/R, 9/27)  
 121.7 (Rwys 15L/R, 33L/R)  
 HOUSTON TOWER  
 120.725 290.2 (Rwys 8L/26R)  
 125.35 290.2 (Rwys 8R/26L)  
 127.3 288.25 (Rwys 15L/R, 33L/R)  
 135.15 290.2 (Rwys 9/27)  
 HOUSTON DEP CON  
 132.25 285.425

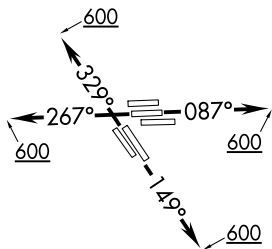
**TOP ALTITUDE:**  
**16000**



NOTE: RADAR required.  
 NOTE: DME/DME/IRU or GPS required.  
 NOTE: RNAV 1.  
 NOTE: TPAKK TRANSITION: For non GPS equipped aircraft TNV DME must be operational.

### TAKEOFF MINIMUMS

Rwys 8L/R, 9, 15L/R, 26L/R, 27, 33L/R:  
 Standard with minimum climb of 500' per NM to 600.



### DEPARTURE ROUTE DESCRIPTION

**TAKEOFF RUNWAYS 8L/R, 9:** Climb on heading 087° to 600 for RADAR vectors to RENNK, then . . . .  
**TAKEOFF RUNWAYS 15L/R:** Climb on heading 149° to 600 for RADAR vectors to RENNK, then . . . .  
**TAKEOFF RUNWAYS 26L/R, 27:** Climb on heading 267° to 600 for RADAR vectors to RENNK, then . . . .  
**TAKEOFF RUNWAYS 33L/R:** Climb on heading 329° to 600 for RADAR vectors to RENNK, then . . . .

. . . . on track 016° to COLET, then on track 025° to SUSHI, then on track 026° to WWELL, then on track 026° to INDIE, then on (transition). Maintain 16000 or as assigned by ATC. Expect filed altitude 10 minutes after departure.

### TPAKK TRANSITION (INDIE8.TPAKK)

NOTE: Chart not to scale.

# INDIE EIGHT DEPARTURE (RNAV)

HOUSTON, TEXAS

(INDIE8.INDIE) 07OCT21

GEORGE BUSH INTCNTL/HOUSTON (IAH)

SC-5, 31 OCT 2024 to 28 NOV 2024

SC-5, 31 OCT 2024 to 28 NOV 2024