

LOC/DME I-IAH 109.7 Chan 34	APP CRS 087°	Rwy Idg 9402 TDZE 95 Apt Elev 96
---	------------------------	---

ILS or LOC RWY 8R

GEORGE BUSH INTCNL/HOUSTON (IAH)

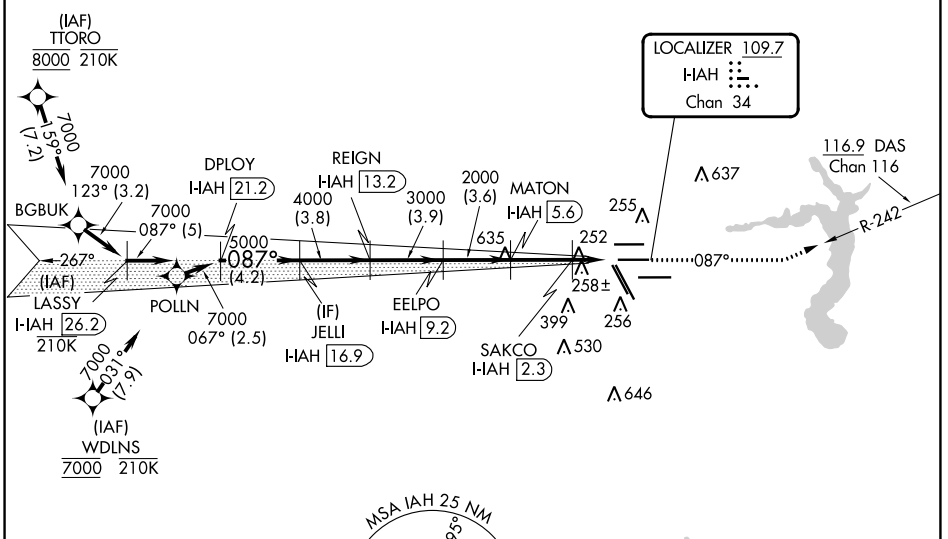
RNAV 1-GPS or RADAR required for procedure entry, DME.

Simultaneous approach authorized. For inop ALS, increase S-LOC 8R Cat C/D/E visibility to 1 $\frac{1}{2}$ SM. For inop ALS, increase S-ILS 8R Cat E visibility to RVR 4000.

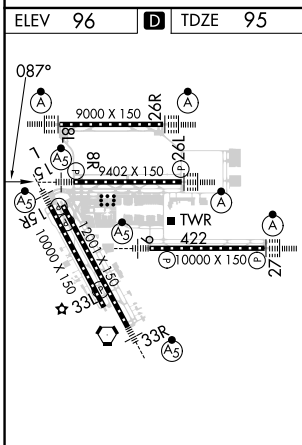
MALSRL

MISSED APPROACH: Climb to 3000 on heading 087° and on DAS VORTAC R-242 to DAS VORTAC and hold.

D-ATIS 124.05	HOUSTON APP CON 120.05 379.1 EAST 124.35 316.15 WEST	HOUSTON TOWER 125.35 290.2	GND CON 118.575	CLNC DEL 128.1	CPDLC Δ 2049
-------------------------	--	--------------------------------------	---------------------------	--------------------------	------------------------



ELEV 96 TDZE 95



TDZ/CL Rwy 8R, 8L, 15R, 26R, 26L, 27 and 33L
HIRL all Rwy



VGSi and ILS glidepath not coincident (VGSi Angle 3.00/TCH 72).					
LASSY I-IAH 26.2	DPLY I-IAH 21.2	JELLI I-IAH 16.9	REIGN I-IAH 13.2	EELPO I-IAH 9.2	MATON I-IAH 5.6
7000	5000	4000	3000	2000	2000
GS 3.00°	087°	087°	087°	087°	087°
TCH 55	5	4.2	3.8	3.9	3.6
					3.3
					1.3
					1.2
CATEGORY	A	B	C	D	E
S-ILS 8R	295/18		200 (200- $\frac{1}{2}$)		
S-LOC 8R	560/24	465 (500- $\frac{1}{2}$)	560/50	465 (500-1)	

SC-5, 03 OCT 2024 to 31 OCT 2024

SC-5, 03 OCT 2024 to 31 OCT 2024