

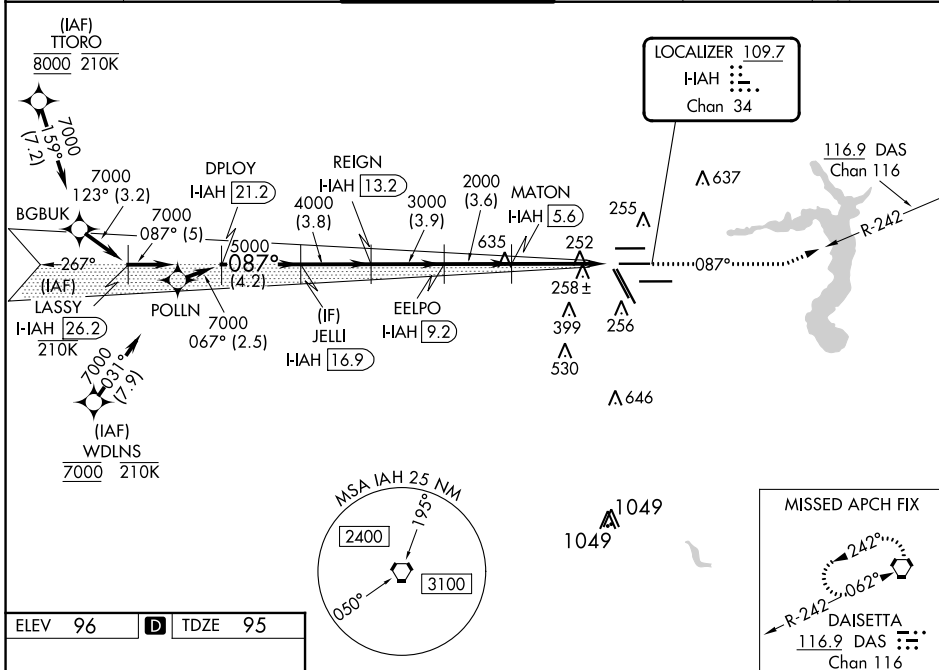
LOC/DME I-IAH <b>109.7</b> Chan <b>34</b>	APP CRS <b>087°</b>	Rwy Idg <b>9402</b> TDZE <b>95</b> Apt Elev <b>96</b>
---	------------------------	---

# ILS RWY 8R (SA CAT I & II)

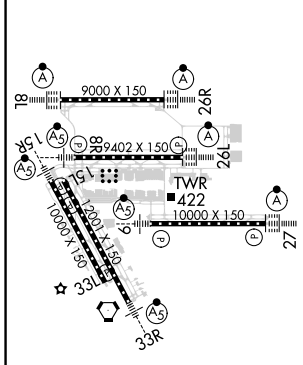
GEORGE BUSH INTCNL/HOUSTON (IAH)

RNAV 1-GPS or RADAR required for procedure entry, DME.		MALSR	MISSED APPROACH: Climb to 3000 on heading 087° and on DAS VORTAC R-242 to DAS VORTAC and hold.
Simultaneous approach authorized. SA CAT I: Requires specific OPSPEC, MSPEC, or LOA approval and use of HUD to DH. SA CAT II: Reduced lighting: requires specific OPSPEC, MSPEC, or LOA approval and use of autoland or HUD to touchdown.			

D-ATIS <b>124.05</b>	HOUSTON APP CON <b>120.05 379.1</b> EAST <b>124.35 316.15</b> WEST	HOUSTON TOWER <b>125.35 290.2</b>	GND CON <b>118.575</b>	CLNC DEL <b>128.1</b>	CPDLC A 2049
-------------------------	--	--------------------------------------	---------------------------	--------------------------	-----------------



ELEV 96	<b>D</b>	TDZE 95
---------	----------	---------



TDZ/CL Rwy 8R, 8L, 15R, 26R, 26L, 27 and 33L  
HIRL all Rwy

VGSi and ILS glidepath not coincident (VGSi Angle 3.00/TCH 72).		3000	DAS
LASSY I-IAH 26.2	DPLOY I-IAH 21.2	hdg 087°	DAS R-242
JELLI I-IAH 16.9	REIGN I-IAH 13.2		
EELPO I-IAH 9.2	MATON INT I-IAH 5.6		
7000 087°	7000 087°		
5000	4000	3000	2000
GS 3.00°	TCH 55		
-5 NM -4.2 NM -3.8 -3.9 -3.6 -5.8 NM 1040°			
CATEGORY	A	B	C
S-ILS 8R	SA CAT I RA 152/14	150	DA 245
S-ILS 8R	SA CAT II RA 102/12	100	DA 195

## SA CATEGORY I and II ILS SPECIAL AIRCREW & AIRCRAFT CERTIFICATION REQUIRED

SC-5, 31 OCT 2024 to 28 NOV 2024

SC-5, 31 OCT 2024 to 28 NOV 2024