

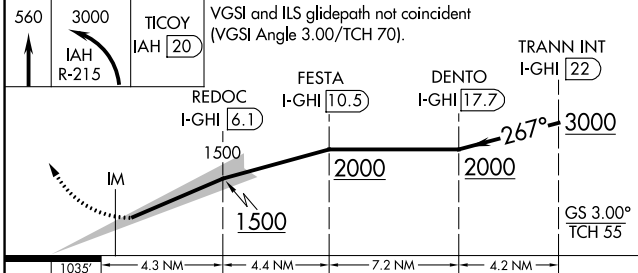
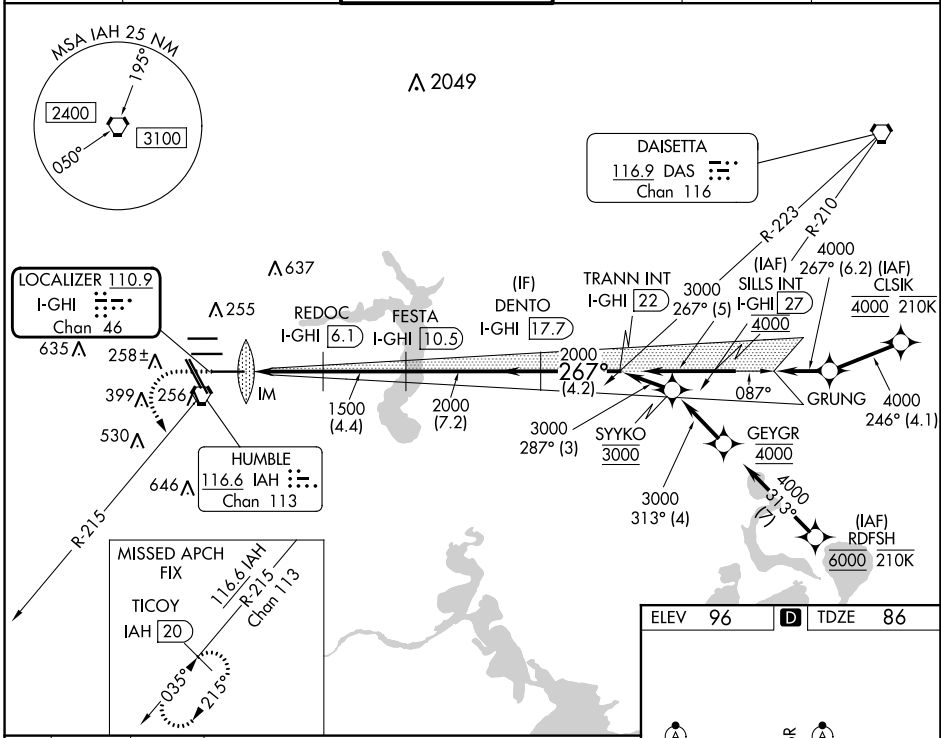
LOC/DME I-GHI <b>110.9</b> Chan <b>46</b>	APP CRS <b>267°</b>	Rwy Idg <b>10000</b> TDZE <b>86</b> Apt Elev <b>96</b>
---	------------------------	--

# ILS RWY 27 (SA CAT I)

GEORGE BUSH INTCNTL/HOUSTON (IAH)

RNAV 1-GPS or RADAR required for procedure entry. DME required.	ALSIF-2 	MISSED APPROACH: Climb to 560 then climbing left turn to 3000 on IAH VORTAC R-215 to TICOY/IAH 20 DME and hold.
Simultaneous approach authorized. Use of FD or AP required during simultaneous operations. Requires specific OPSPEC, MSPEC, or LOA approval and use of HUD to DH.		

D-ATIS <b>124.05</b>	HOUSTON APP CON <b>120.05 379.1 EAST</b> <b>124.35 316.15 WEST</b>	HOUSTON TOWER <b>135.15 290.2</b>	GND CON <b>118.575</b>	CLNC DEL <b>128.1</b>	CPDLC
-------------------------	--	--------------------------------------	---------------------------	--------------------------	-------



ELEV <b>96</b>	<b>D</b> TDZE <b>86</b>
----------------	-------------------------

**TWR 422**

Dimensions: 9000 X 150, 2402 X 150, 1200 X 150, 1000 X 150

Frequencies: 124.35, 124.35, 124.35, 124.35

CATEGORY	A	B	C	D
S-ILS 27	RA 157/14 150 DA 236			
<b>SA CATEGORY I ILS - SPECIAL AIRCREW &amp; AIRCRAFT CERTIFICATION REQUIRED</b>				

TDZ/CL Rwws 8R, 8L, 15R, 26R, 26L, 27 and 33L  
HIRL all Rwws

SC-5, 08 AUG 2024 to 05 SEP 2024

SC-5, 08 AUG 2024 to 05 SEP 2024