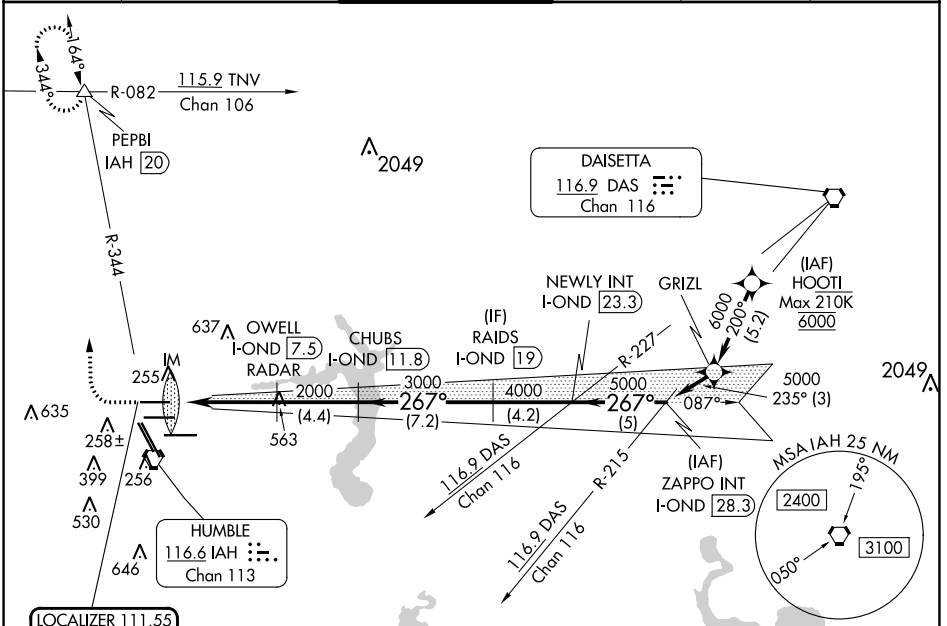


LOC/DME I-OND 111.55 Chan 52 (Y)	APP CRS 267°	Rwy Idg TDZE 95 Apt Elev 96	9000
--	------------------------	---	-------------

ILS RWY 26R (CAT II & III)

GEORGE BUSH INTCNL/HOUSTON (IAH)

DME required. From HOOI: RNAV 1-GPS required.		ALSF-2 	MISSED APPROACH: Climb to 600 then climbing right turn to 3000 on IAH VORTAC R-344 to PEPBI INT/ IAH 20 DME and hold.					
Simultaneous approach authorized with Rwy 26L and Rwy 27. Cat II: RVR 1000 authorized with specific OPSPEC, MSPEC or LOA approval and use of autoland or HUD to touchdown.			D-ATIS 124.05	HOUSTON APP CON 120.05 379.1 EAST 124.35 316.15 WEST	HOUSTON TOWER 120.725 290.2	GND CON 118.575	CLNC DEL 128.1	CPDLC

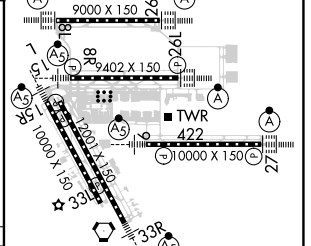
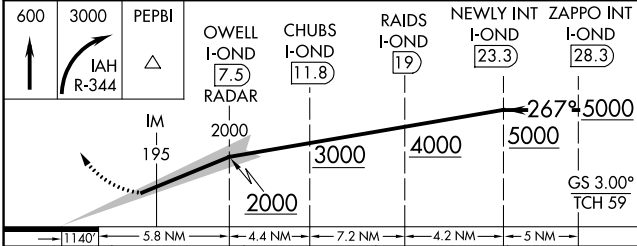


SC-5, 03 OCT 2024 to 31 OCT 2024

SC-5, 03 OCT 2024 to 31 OCT 2024

LOCALIZER 111.55 I-OND Chan 52 (Y)	HUMBLE 116.6 IAH Chan 113	DAISETTA 116.9 DAS Chan 116
--	---	---

ELEV 96	D TDZE 95
----------------	-------------------------



CATEGORY	A	B	C	D
S-ILS-26R	CAT II RA 99/12 100 DA 195			
S-ILS-26R	CAT III RVR 06			

CATEGORY II & III ILS - SPECIAL AIRCREW & AIRCRAFT CERTIFICATION REQUIRED

TDZ/CL Rwy's 8R, 8L, 15R, 26R, 26L, 27 and 33L
HIRL all Rwy's