

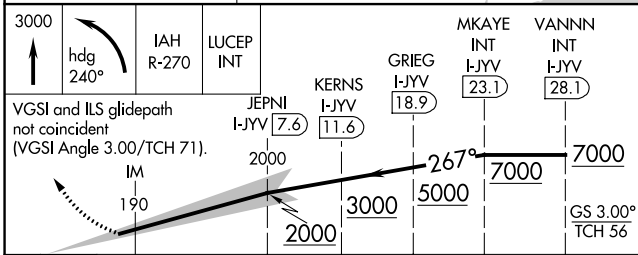
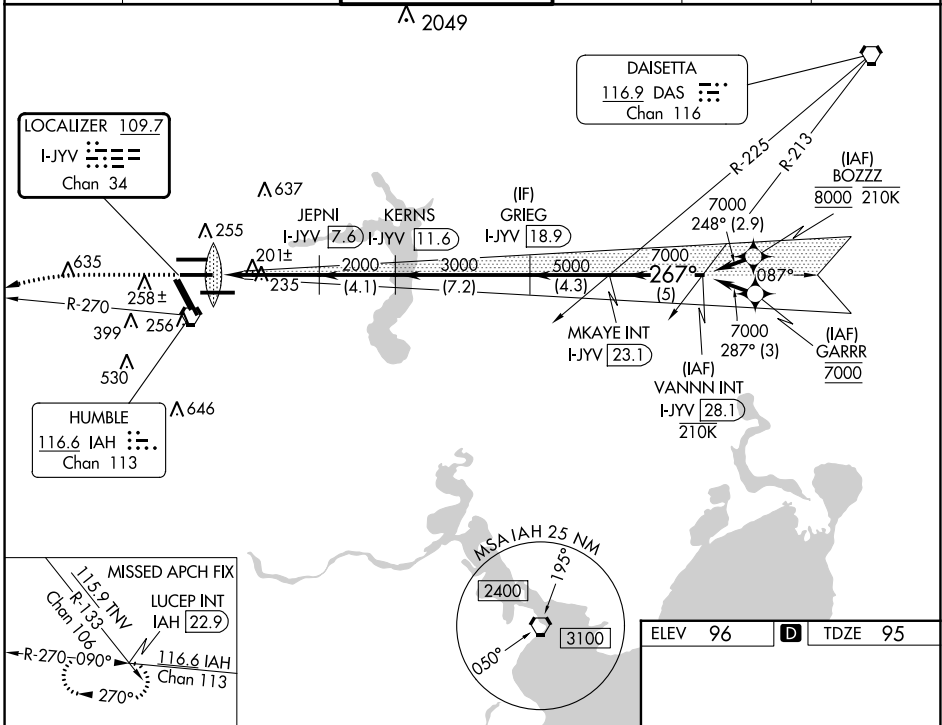
LOC/DME I-JYV 109.7 Chan 34	APP CRS 267°	Rwy Idg TDZE 95 Apt Elev 96	9402
---	------------------------	---	-------------

ILS RWY 26L (CAT II & III)

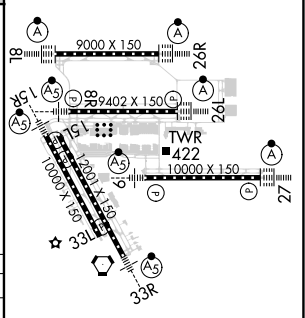
GEORGE BUSH INTCNL/HOUSTON (IAH)

DME required. From BOZZZ, GARRR: RNAV 1-GPS required.		ALSF-2 	MISSED APPROACH: Climb to 3000 then left turn heading 240° and IAH VORTAC R-270 to LUCEP INT/IAH 22.9 DME and hold.
Simultaneous approach authorized with Rwy 26R and Rwy 27. Cat II: RVR 1000 authorized with specific OPSPEC, MSPEC, or LOA approval and use of autoland or HUD to touchdown.			

D-ATIS 124.05	HOUSTON APP CON 120.05 379.1 EAST 124.35 316.15 WEST	HOUSTON TOWER 125.35 290.2	GND CON 118.575	CLNC DEL 128.1	CPDLC
-------------------------	--	--------------------------------------	---------------------------	--------------------------	-------



ELEV 96	D TDZE 95
---------	------------------



3000	hdg 240°	IAH R-270	LUCEP INT	MKAYE INT I-JYV 23.1	VANNN INT I-JYV 28.1
VGSi and ILS glidepath not coincident (VGSi Angle 3.00/TCH 71).					
JEPNI I-JYV 7.6		KERNS I-JYV 11.6		GRIEG I-JYV 18.9	
2000		2000		267°	
3000		5000		7000	
1042'		5.8 NM		4.1 NM	
7.2 NM		4.3 NM		5 NM	
CATEGORY	A	B	C	D	
S-ILS 26L	CAT II RA 100/12		100 DA 195		
S-ILS 26L	CAT III RVR 06				

CATEGORY II & III ILS - SPECIAL AIRCREW & AIRCRAFT CERTIFICATION REQUIRED

TDZ/CL Rws 8R, 8L, 15R, 26R, 26L, 27 and 33L
HIRL all Rws

SC-5, 31 OCT 2024 to 28 NOV 2024

SC-5, 31 OCT 2024 to 28 NOV 2024