

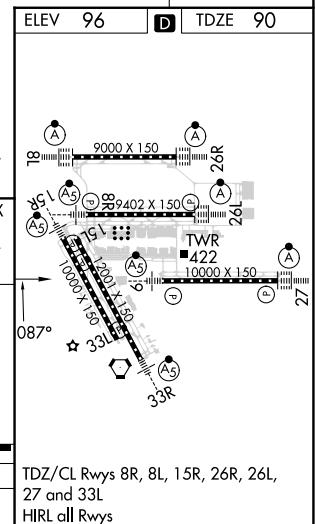
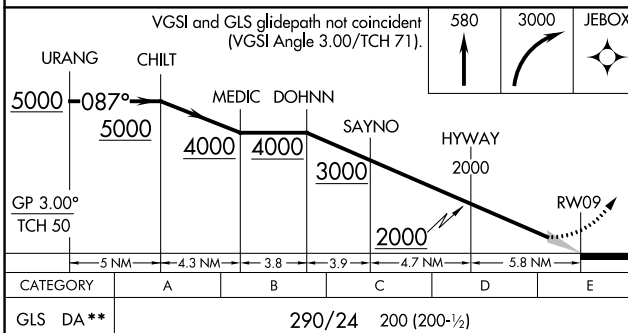
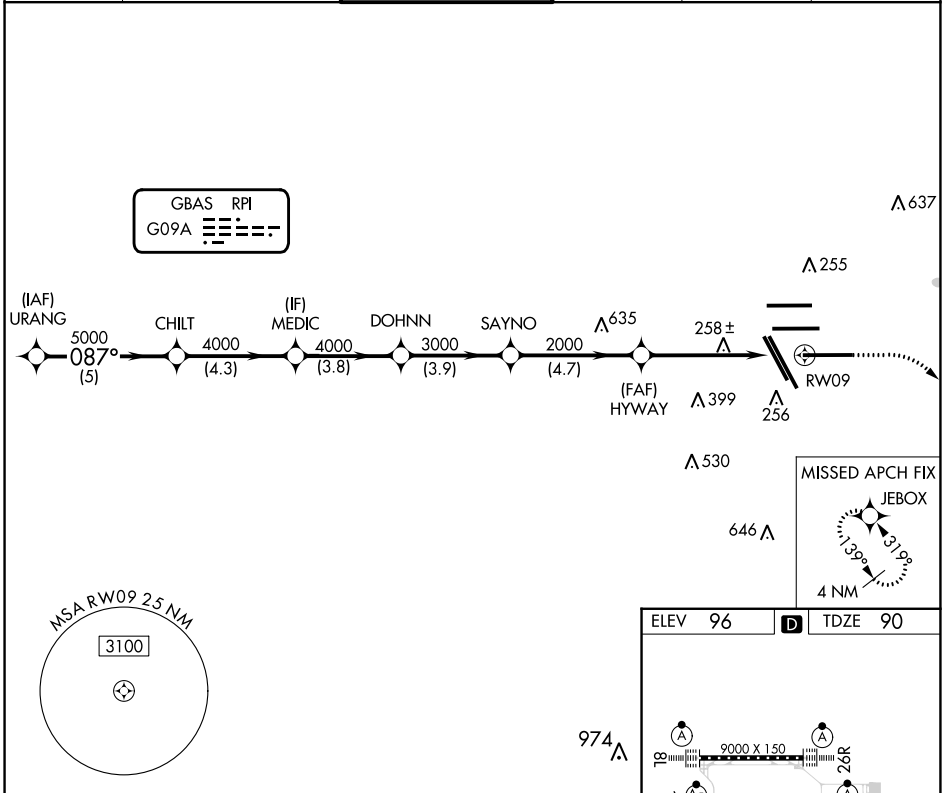
GBAS	APP CRS	Rwy ldg	10000
CH 21895	087°	TDZE	90
RPI G09A		Apt Elev	96

GLS RWY 9

GEORGE BUSH INTCNL/HOUSTON (IAH)

RNP APCH - GPS.		MALSR	MISSED APPROACH: Climb to 580 then climbing right turn to 3000 direct JEBOX and hold.
<p>Simultaneous approach authorized. Use of FD or AP required during simultaneous operations. Autopilot coupled approach NA below 290. ** RVR 1800 authorized with use of FD or AP or HUD to DA.</p>			

D-ATIS 124.05	HOUSTON APP CON 120.05 379.1 EAST 124.35 316.15 WEST	HOUSTON TOWER 135.15 290.2	GND CON 118.575	CLNC DEL 128.1	CPDLC
-------------------------	--	--------------------------------------	---------------------------	--------------------------	-------



HOUSTON, TEXAS	GEORGE BUSH INTCNL/HOUSTON (IAH)
Amdt 1C 23FEB23	GLS RWY 9
29°59'N-95°20'W	

SC-5, 31 OCT 2024 to 28 NOV 2024

SC-5, 31 OCT 2024 to 28 NOV 2024