

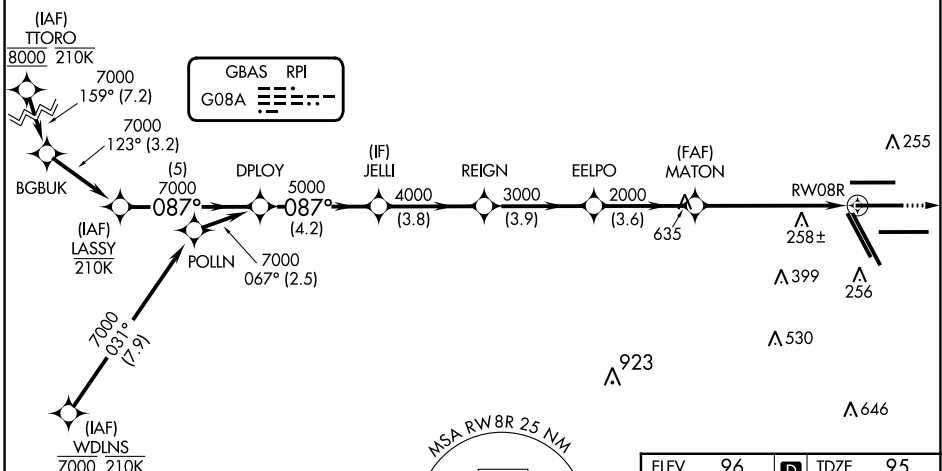
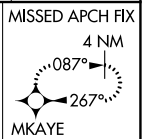
GBAS CH <b>20251</b> <b>G08A</b>	APP CRS <b>087°</b>	Rwy Idg TDZE Apt Elev	<b>9402</b> <b>95</b> <b>96</b>
--	------------------------	-----------------------------	---------------------------------------

# GLS RWY 8R

GEORGE BUSH INTCNL/HOUSTON (IAH)

RNP APCH - GPS.		MALS R	MISSED APPROACH: Climb to 3000 direct MKAYE and hold.		
<p>Simultaneous approach authorized. Use of FD or AP required during simultaneous operations. Autopilot coupled approach NA below 295.</p>					

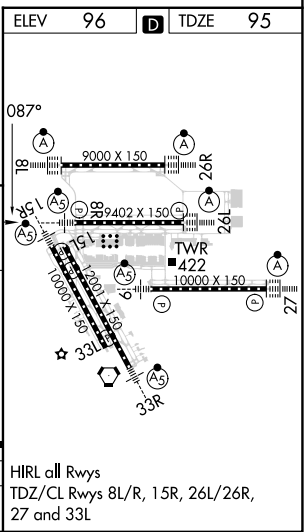
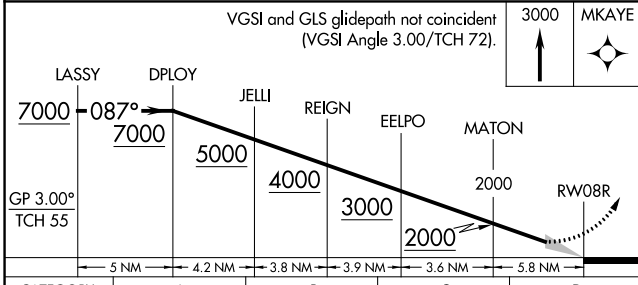
D-ATIS <b>124.05</b>	HOUSTON APP CON <b>120.05 379.1</b> EAST <b>124.35 316.15</b> WEST	HOUSTON TOWER <b>125.35 290.2</b>	GND CON <b>118.575</b>	CLNC DEL <b>128.1</b>	CPDLC
-------------------------	--	--------------------------------------	---------------------------	--------------------------	-------



SC-5, 31 OCT 2024 to 28 NOV 2024

SC-5, 31 OCT 2024 to 28 NOV 2024

ELEV	96	TDZE	95
------	----	------	----



CATEGORY	A	B	C	D
GLS DA	295/18		200 (200-1/2)	

HIRL all Rwys  
TDZ/CL Rwwys 8L/R, 15R, 26L/26R, 27 and 33L