

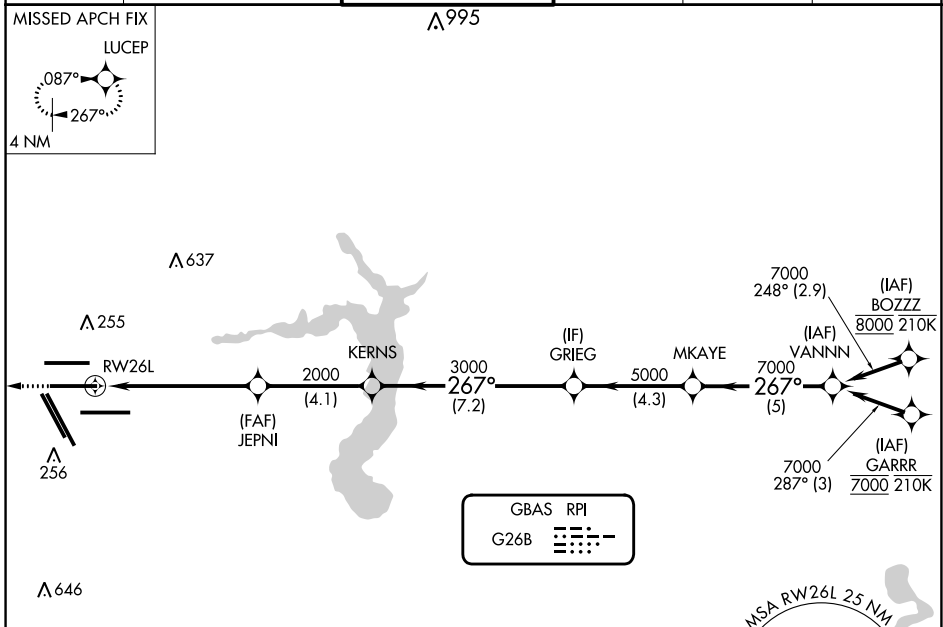
GBAS CH 20662 G26B	APP CRS 267°	Rwy Idg TDZE Apt Elev	9402 95 96
--	------------------------	-----------------------------	---------------------------------------

GLS RWY 26L

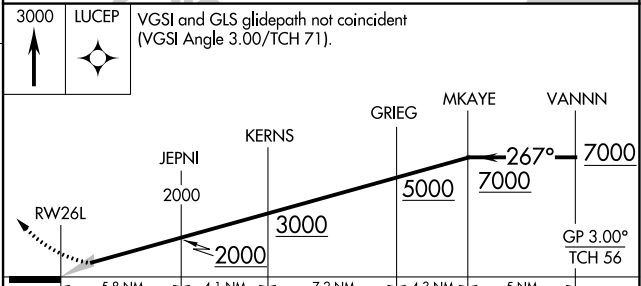
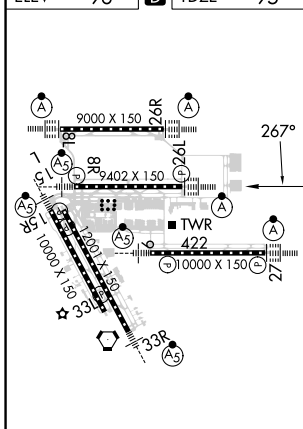
GEORGE BUSH INTCNL/HOUSTON (IAH)

RNP APCH - GPS.	ALSF-2	MISSED APPROACH: Climb to 3000 direct LUCEP and hold.
Simultaneous approach authorized. Use of FD or AP required during simultaneous operations. Autopilot coupled approach NA below 295.		

D-ATIS 124.05	HOUSTON APP CON 120.05 379.1 EAST 124.35 316.15 WEST	HOUSTON TOWER 125.35 290.2	GND CON 118.575	CLNC DEL 128.1	CPDLC
-------------------------	--	--------------------------------------	---------------------------	--------------------------	-------



ELEV 96	D	TDZE 95
---------	----------	---------



CATEGORY	A	B	C	D
GLS DA	295/18 200 (200-1/2)			

SC-5, 03 OCT 2024 to 31 OCT 2024

SC-5, 03 OCT 2024 to 31 OCT 2024