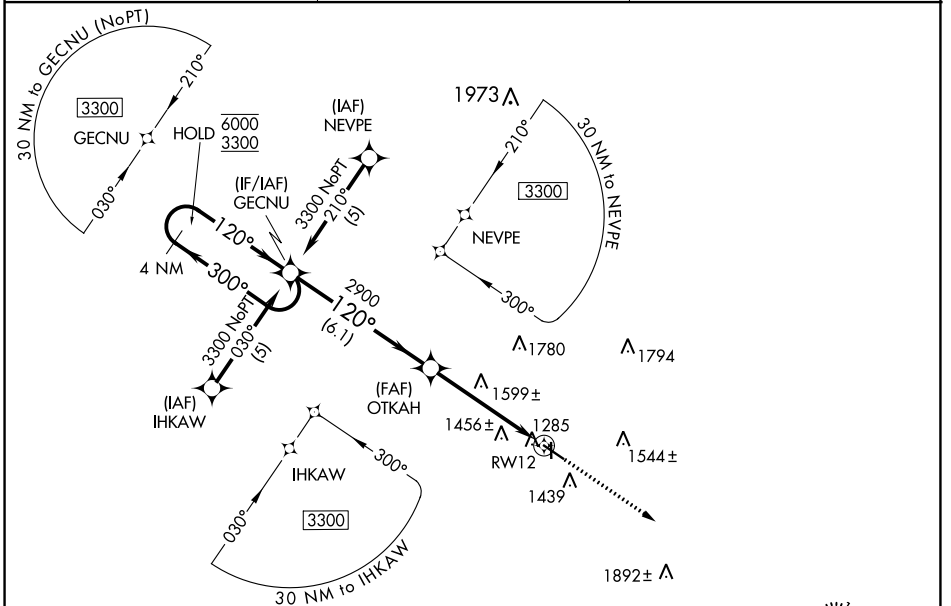


| | | | |
|--|------------------------|-----------------------------|---|
| WAAS CH 90409 W12A | APP CRS 120° | Rwy Idg TDZE Apt Elev | 5000 1274 1274 |
|--|------------------------|-----------------------------|---|

RNAV (GPS) RWY 12

DENISON MUNI (DNS)

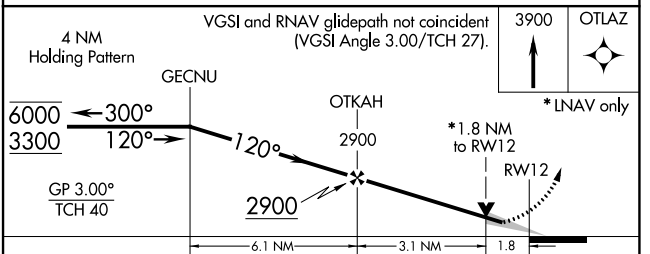
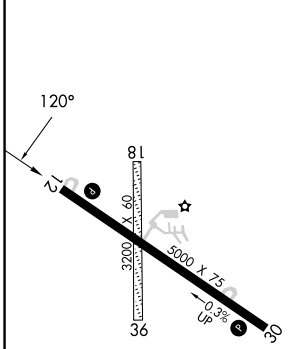
| | | |
|--|--|---|
| RNP APCH-GPS. | | MISSED APPROACH: Climb to 3900 direct OTLAZ and hold. |
| <p>▼ Circling NA to Rwys 18 and 36. For uncompensated Baro-VNAV systems, LNAV/VNAV NA below -17°C or above 54°C. Baro-VNAV and VDP NA when using Carroll altimeter setting. ▲ When local altimeter setting not received, use Carroll altimeter setting; increase LPV DA 1596 feet, LNAV/VNAV DA to 1626 feet; increase all MDAs 80 feet and visibility LNAV Cat C ½ SM and Circling Cat C ¼ SM.</p> | | |
| AWOS-3 119.95 | MINNEAPOLIS CENTER 119.6 290.4 | UNICOM 122.8 (CTAF) 0 |



NC-3, 31 OCT 2024 to 28 NOV 2024

NC-3, 31 OCT 2024 to 28 NOV 2024

| | |
|-----------|-----------|
| ELEV 1274 | TDZE 1274 |
|-----------|-----------|



| CATEGORY | A | B | C | D |
|--------------|-----------------------|-----------------------|-------------------------|----|
| LPV DA | | 1524-1 | 250 (300-1) | NA |
| LNAV/VNAV DA | | 1554-1 | 280 (300-1) | NA |
| LNAV MDA | 1860-1 | 586 (600-1) | 1860-1¾ 586 (600-1¾) | NA |
| CIRCLING | 1860-1 586 (600-1) | 1880-1 606 (700-1) | 2100-2½ 826 (900-2½) | NA |

MIRL Rwy 12-30 0
REIL Rwy 12 and 30 0

DENISON, IOWA
Amdt 1C 15JUL21

41°59'N-95°23'W

DENISON MUNI (DNS) RNAV (GPS) RWY 12