

KARRR SEVEN DEPARTURE (RNAV)

SC-5, 03 OCT 2024 to 31 OCT 2024

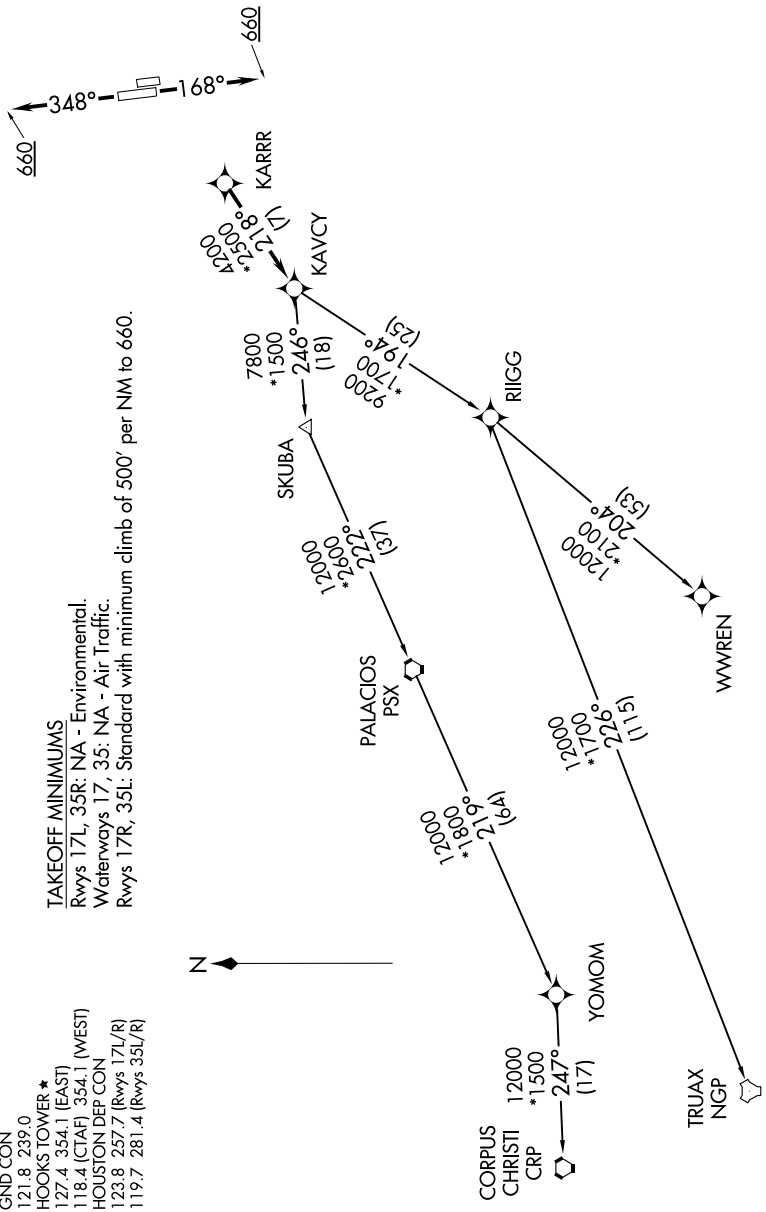
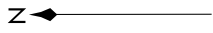
**TOP ALTITUDE:
ASSIGNED BY ATC**

RNAV-1 DME/DME/IRU or GPS.
RADAR required.

TAKEOFF MINIMUMS

Rwys 17L, 35R: NA - Environmental.
Waterways 17, 35: NA - Air Traffic.
Rwys 17R, 35L: Standard with minimum climb of 500' per NM to 660.

- ATIS 128.375
- CINC DEL 119.45
- GND CON 121.8 239.0
- HOOKS TOWER* 127.4 354.1 (EAST)
- 118.4 (CTAF) 354.1 (WEST)
- HOUSTON DEP CON 123.8 257.7 (Rwys 17L/R)
- 119.7 281.4 (Rwys 35L/R)



NOTE: Chart not to scale.

(NARRATIVE ON FOLLOWING PAGE)

SC-5, 03 OCT 2024 to 31 OCT 2024