

(INDIE8.INDIE) 21280

AL-5457 (FAA)

DAVID WAYNE HOOKS MEML (DWH)

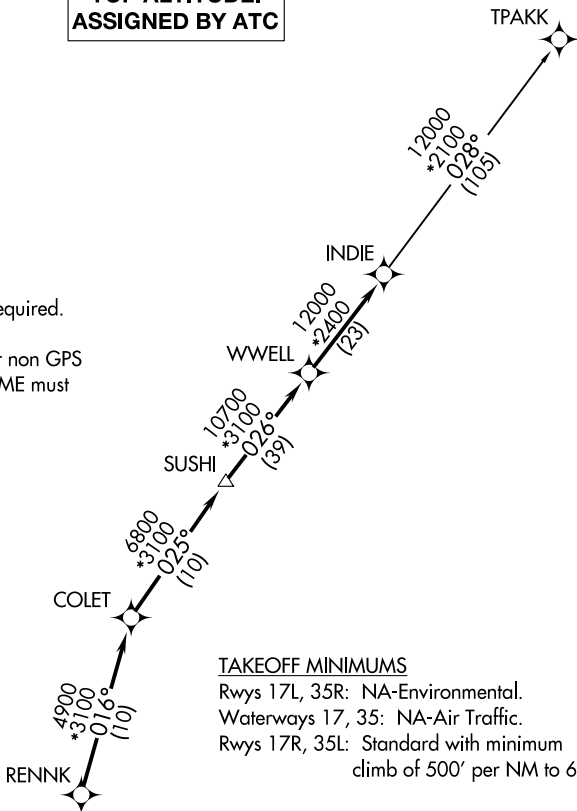
INDIE EIGHT DEPARTURE (RNAV)

HOUSTON, TEXAS

ATIS
 128.375
 CLNC DEL
 119.45
 GND CON
 121.8 239.0
 HOOKS TOWER★
 127.4 354.1 (EAST)
 118.4 (CTAF) 354.1 (WEST)
 HOUSTON DEP CON
 119.7 281.4

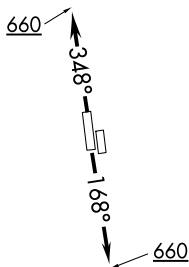
**TOP ALTITUDE:
ASSIGNED BY ATC**

NOTE: RADAR required.
 NOTE: DME/DME/IRU or GPS required.
 NOTE: RNAV 1.
 NOTE: TPAKK TRANSITION: For non GPS
 equipped aircraft TNV DME must
 be operational.



TAKEOFF MINIMUMS

Rwy's 17L, 35R: NA-Environmental.
 Waterways 17, 35: NA-Air Traffic.
 Rwy's 17R, 35L: Standard with minimum
 climb of 500' per NM to 660.



DEPARTURE ROUTE DESCRIPTION

TAKEOFF RUNWAY 17R: Climb on heading 168° to 660 for RADAR vectors to RENNK, then...

TAKEOFF RUNWAY 35L: Climb on heading 348° to 660 for RADAR vectors to RENNK, then...

...on track 016° to COLET, then on track 025° to SUSHI, then on track 026° to WWELL, then on track 026° to INDIE, then on (transition). Maintain ATC assigned altitude. Expect filed altitude 10 minutes after departure.

TPAKK TRANSITION (INDIE8.TPAKK)

NOTE: Chart not to scale.

SC-5, 05 SEP 2024 to 03 OCT 2024

SC-5, 05 SEP 2024 to 03 OCT 2024

INDIE EIGHT DEPARTURE (RNAV)

(INDIE8.INDIE) 07OCT21

HOUSTON, TEXAS

DAVID WAYNE HOOKS MEML (DWH)