

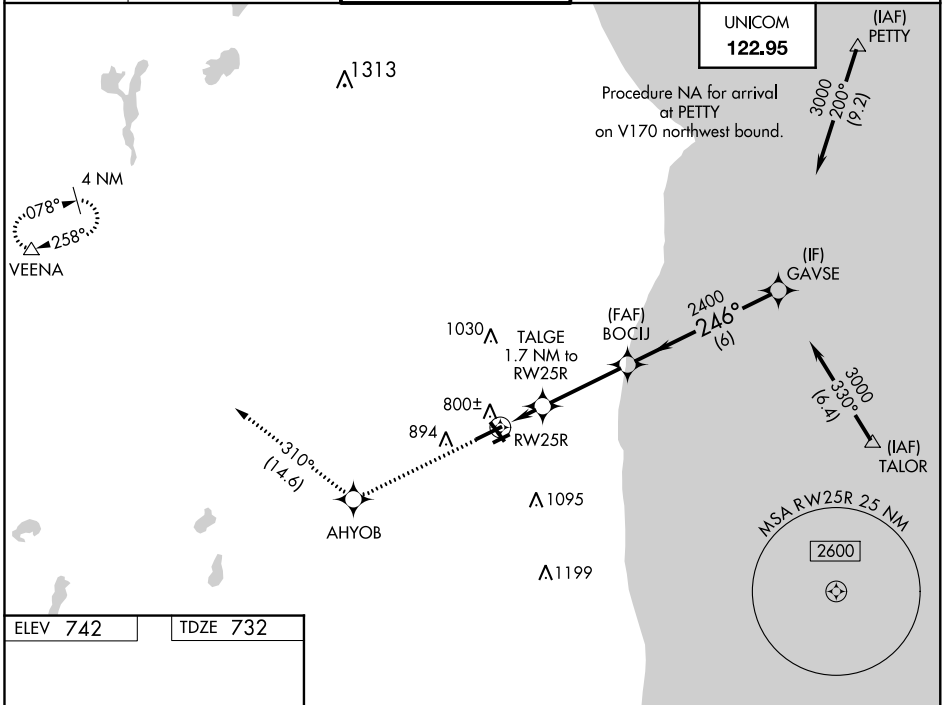
WAAS CH 49014 W25A	APP CRS 246°	Rwy Idg TDZE 732 Apt Elev 742	5499
--	------------------------	---	-------------

RNAV (GPS) RWY 25R

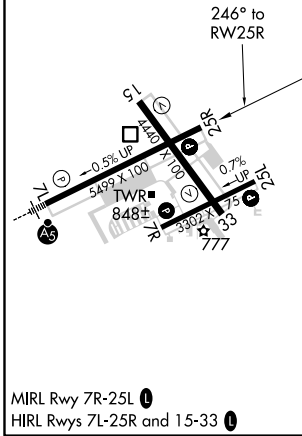
KENOSHA RGNL (E.N.W)

RNP APCH.		MISSED APPROACH: Climb to 3000 direct AHYOB and on track 310° to VEENA and hold.	
<p>▼ Circling Rwy 7R, 15 NA at night. For uncompensated Baro-VNAV systems, LNAV/VNAV NA below -1.6°C or above 47°C.</p>			

ATIS 127.175	MILWAUKEE APP CON 135.875 317.725	KENOSHA TOWER ★ 118.6 (CTAF) 0 353.6	GND CON 121.875	CLNC DEL 121.875 118.6 (when tower closed)
------------------------	---	--	---------------------------	--



ELEV 742	TDZE 732
-----------------	-----------------



3000	AHYOB	tr 310°	VEENA	GAVSE
*LNAV only				
RWY 25R		TALGE 1.7 NM to RWY 25R	BOCIJ	3000
*1.1 NM to RWY 25R		*1280		GP 3.00° TCH 45
1.1 NM		0.6 NM	3.4 NM	6 NM
CATEGORY	A	B	C	D
LPV DA	982-1		250 (300-1)	
LNAV/VNAV DA	1064-1¼		332 (400-1¼)	
LNAV MDA	1100-1		368 (400-1)	
CIRCLING	1200-1		458 (500-1)	
			1200-1½	
			458 (500-1½)	
			1340-2	
			598 (600-2)	

EC-3, 12 SEP 2019 to 10 OCT 2019

EC-3, 12 SEP 2019 to 10 OCT 2019