

LAPEER, MICHIGAN

AL-5446 (FAA)

22139

VORTAC FNT 116.9 Chan 116	APP CRS 080°	Rwy Idg TDZE Apt Elev N/A N/A 835
---	------------------------	---

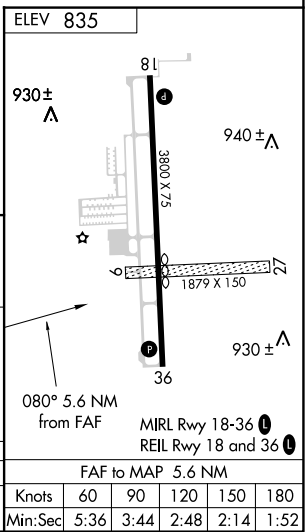
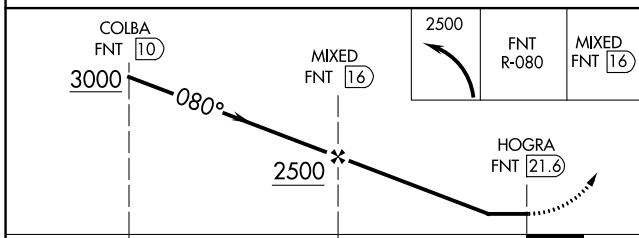
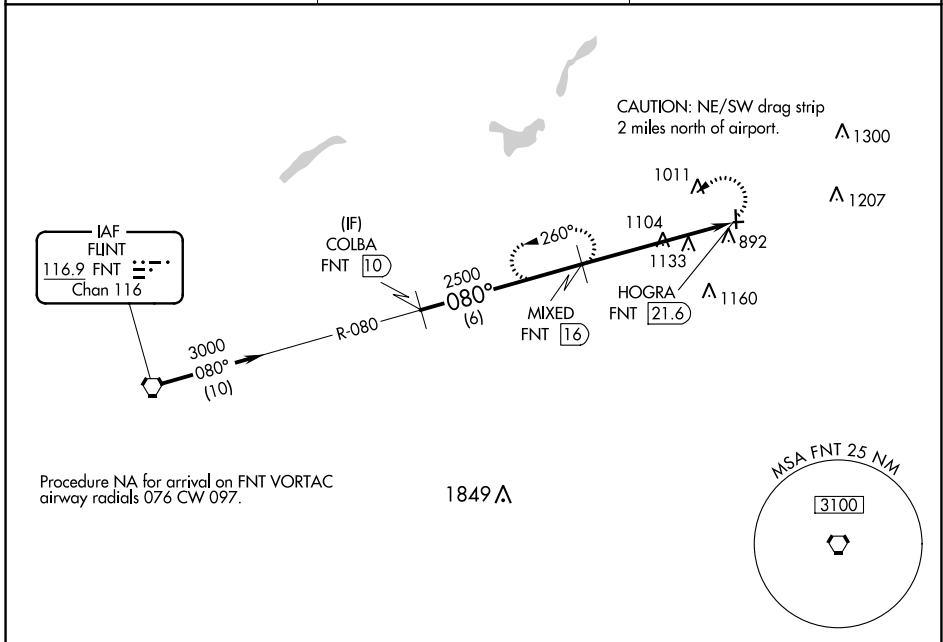
VOR-A
DUPONT/LAPEER (D95)

DME required.

▼ Circling NA to Rwy 9 and 27. Circling Rwy 18 NA at night. Rwy 18 helicopter visibility reduction below 1 SM NA.

MISSED APPROACH: Climbing left turn to 2500 on FNT VORTAC R-080 to MIXED 16 DME and hold.

AWOS-3P 134.050	GREAT LAKES APP CON ★ 118.8 257.9	UNICOM 123.0 (CTAF) 0
---------------------------	---	--



CATEGORY	A		B		C		D		FAF to MAP 5.6 NM							
	1400-1	565 (600-1)	1460-1¾	625 (700-1¾)	NA	Knots	60	90	120	150	180	Min:Sec	5:36	3:44	2:48	2:14

LAPEER, MICHIGAN
Amdt 1 13SEP18

43°04'N-83°16'W

DUPONT/LAPEER (D95)
VOR-A

EC-1, 08 AUG 2024 to 05 SEP 2024

EC-1, 08 AUG 2024 to 05 SEP 2024